

Department of Education Services



Annual Report 2009-10

CONTACT DETAILS

DEPARTMENT OF EDUCATION SERVICES

STREET ADDRESS

22 Hasler Road
OSBORNE PARK WA 6017

POSTAL ADDRESS

PO Box 1766
OSBORNE PARK WA 6916

ELECTRONIC

Telephone: (08) 9441 1900
Facsimile: (08) 9441 1901
Email: des@des.wa.gov.au
Website: www.des.wa.gov.au

OFFICE HOURS

Monday to Friday
8:30am – 4.30pm

Copies of this document are available on the Department's web site and will be made available in alternative formats such as computer disk, audiotape or Braille upon request from a person with a disability.

STATEMENT OF COMPLIANCE

Hon Dr E Constable MLA
Minister for Education; Tourism

In accordance with Section 63 of the *Financial Management Act 2006*, I hereby submit for your information and presentation to Parliament, the Annual Report of the Department of Education Services for the financial year ended 30 June 2010.

The Annual Report has been prepared in accordance with the provisions of the *Financial Management Act 2006*.

A handwritten signature in black ink, consisting of a large, stylized 'R' followed by a horizontal line that ends in a small loop.

RICHARD STRICKLAND
ACCOUNTABLE AUTHORITY

DATE: 15 September 2010

CONTENTS

Statement of Compliance	3
Chief Executive Officer Overview	5
Overview of Agency.....	7
<i>Executive Summary</i>	7
<i>Performance Highlights</i>	7
<i>Profile and Operational Structure</i>	9
<i>Performance Management Framework</i>	14
Agency Performance	15
<i>Report on Operations</i>	15
<i>Report on Operations by Program Area</i>	17
Significant Issues and Trends.....	37
Disclosures and Legal Compliance.....	38
<i>Financial Statements</i>	38
<i>Auditor General's Opinion</i>	39
<i>Statement of Comprehensive Income</i>	41
<i>Statement of Financial Position</i>	42
<i>Statement of Changes in Equity</i>	43
<i>Statement of Cash Flows</i>	44
<i>Summary of Consolidated Account Appropriations and Income Estimates</i>	45
<i>Notes to the Financial Statements for the Year Ended 30 June 2010</i>	46
<i>Key Performance Indicators</i>	70
<i>Other Financial Disclosures</i>	76
<i>Governance Disclosures</i>	78
<i>Other Legal Requirements</i>	78
<i>Government Policy Requirements</i>	81
Appendices.....	82
1 <i>Publications</i>	82
2 <i>Statistics</i>	83
3 <i>Non-Government Schools - Registration Activity in 2009-10</i>	87
4 <i>Community Based Courses - Registration Activity in 2009-10</i>	88
5 <i>Non-Self Accrediting Higher Education Institutions - Registration Activity in 2009-10</i>	88
6 <i>Providers of Education Services to Full Fee International Students - Registration Activity in 2009-10</i>	88
7 <i>Training Organisations - Registration Activity in 2009-10</i>	89
8 <i>Non-Government School Per Capita Grants – 2009 and 2010 Rates</i>	90
9 <i>General and Special Education Per Capita Grants Paid to Non-Government Schools in 2009-10</i>	91
10 <i>Loans Advanced to Non-Government Schools from the Low Interest Loans Scheme (LILS) in 2009-10</i>	96
11 <i>Ministerial Councils and Committees</i>	97

CHIEF EXECUTIVE OFFICER OVERVIEW

In 2009-10 the Department of Education Services continued to provide important services to education and training in Western Australia. It played a crucial role in strengthening and safeguarding the quality of education and training by providing effective and efficient regulation services to approximately 900 education and training providers based in Western Australia. The Department also provided approximately \$312 million in financial support to non-government schools in Western Australia, supporting diversity and choice.

The Department's major achievements in 2009-10 are summarised in the following sections of this report. These achievements highlight the range and diversity of the Department's activities. As a relatively small agency, it is a tribute to the Department's staff that very high standards of service to our clients have been maintained.

Regulation and quality assurance continues to be a major focus for the Department. In response to national issues surrounding the capacity, governance, financial viability and closure of some international education providers, particularly in the VET sector, the Department developed and implemented a strategy involving the re-registration and audit of risk rated providers. This included assessments of financial viability, provider capacity for student delivery, non-compliance activity, student complaints, suitability of infrastructure, commercial standing and probity. The Department also actively participated in the review of the Australian Quality Training Framework (AQTF) for the VET sector. This resulted in the introduction of a strengthened AQTF, including more stringent registration requirements for new and continuing providers, currently being implemented by the Department. These actions have assisted the Department to improve the quality and integrity of the international education and VET sectors in Western Australia.

The Department continues to be actively involved in the emerging focus on national consistency in the education and training regulation area. This has been driven by national agreements relating to the regulation of services in VET, early childhood education and care, international education and growing uniformity in the regulation of higher education. Officers of the Department have worked closely with their counterparts in other States and Territories in a range of national policy forums and committees. In response to the push for national consistency, the Department has implemented a range of strategies focussed on establishing an integrated assurance framework for registration services across the various education sectors in Western Australia. These strategies will work to improve the efficiency and effectiveness of the Department's regulatory processes and reduce red tape for providers.

In addition to administering in excess of \$300 million in grants and subsidies to non-government schools, officers of the Department provide quality advice to the Minister on the registration and re-registration of non-government schools and on a variety of general and specific educational issues related to non-government education. There continues to be a strong focus on the accountability of non-government schools for the financial assistance received from the State Government, underpinned by the implementation of a new financial accountability framework. This has been supported by the establishment of a new funding order with accompanying guidelines, the signing of funding agreements (2010-12) with the governing bodies of each non-government school and the introduction of an annual grant auditing program and financial viability assessment model. The Department has also implemented a clearer registration standard on governance and introduced a more thorough risk assessment process for non-government schools, increasing the minimum compliance requirements for governance and financial management.

Based on the Department's substantial experience with the independent auditing of education and training providers in Western Australia, including non-government schools, the Department was assigned responsibility to review Independent Public Schools. I am pleased to report that an independent effectiveness review of Independent Public Schools is currently being developed by the Department, in consultation with key stakeholders, to support the objective assessment of this new Government initiative.

The Department played a key role in negotiating a new program of State Government support for international education that seeks to maximise the benefits that the industry brings to Western Australia. As part of this program the Department established new funding arrangements to better support the marketing of the Western Australian international education brand and implemented initiatives focussed on promoting a positive experience for students, including the inaugural meeting of the International Student Forum.

In the reporting period, the Department continued to contribute to the portfolio's legislative framework. The Department prepared instructions for bills to amend both the *Curriculum Council Act 1997* and the *Higher Education Act 2004* and assisted the Minister in the passage of a bill to amend the latter Act. A statutory review of the *Western Australian College of Teaching Act 2004*, commenced in 2008, was completed. The Department provided executive support to the Hon Hendy Cowan in conducting a review of post-secondary agricultural education in Western Australia.

The Western Australian Aboriginal Education and Training Council (WAAETC) continued to provide strategic advice to both the Minister for Education and the Minister for Training, with a focus on initiatives that build the capacity of parents and community members to confidently engage in schooling and educational partnerships.

In 2010 the Minister for Education announced the appointment of a new Chairperson and Deputy Chairperson for a reconstituted Rural and Remote Education Advisory Council (RREAC). RREAC will play an important role in advising the State Government on educational issues and developments affecting rural and remote areas of Western Australia.

I would like to take this opportunity to thank the many individuals who have contributed their expertise and time to the work of the various councils, committees, and working groups convened by the Department.

Finally I would like to acknowledge the valuable contribution made by the staff of this Department. The successful delivery of our wide range of services would not have been possible without their professionalism and support. I express my sincere appreciation and thanks to all the staff for their dedication and effort throughout the 2009-10 reporting period.

A handwritten signature in black ink, appearing to read 'R. Strickland', with a stylized, elongated horizontal stroke extending to the right.

RICHARD STRICKLAND
CHIEF EXECUTIVE OFFICER

OVERVIEW OF AGENCY

Executive Summary

The Department of Education Services was established in July 1996 through the amalgamation of several education agencies and areas of responsibility including higher education, non-government education and international education, and several newly created Ministerial Councils. Since the Department was first established there has been a number of amalgamation proposals between agencies within the education and training portfolio and some rationalisation of responsibilities and resources. This has resulted in the Department delivering the following services to the non-government schools, international education, higher education, and vocational education and training sectors in Western Australia:

Regulatory Services to ensure compliance with relevant State legislation and to enhance public confidence in the quality and integrity of education and training through effective and efficient regulation.

Funding Services to the non-government school and university sectors (per capita grants and low interest loans for capital infrastructure projects) and for various scholarship schemes.

Policy Advisory Services and initiatives that improve collaboration between the sectors. The Department supports the Ministers, Government and other bodies through the provision of expert strategic policy, research, planning and legislative services across relevant sectors in Western Australia.

Executive Support Services to four Councils that are directly responsible to the Minister for Education and/or the Minister for Training: the Western Australian Aboriginal Education and Training Council, the Rural and Remote Education Advisory Council, the Training Accreditation Council and the Western Australian Higher Education Council.

Budget: The Department's total budget is \$332.4 million. The bulk of the budget (\$312.5 million) is in grants, subsidies and other transfer payments with the majority (approximately \$273.7 million) appropriated by the Parliament for payment of general per capita grants to non-government schools.

Performance Highlights

- | Provided advice on amendments: to the *Curriculum Council Act 1997* including drafting instructions for a bill to amend that Act; and to the *Higher Education Act 2004* including drafting instructions for a bill to amend that Act and assisting the Minister in the passage of the bill through Parliament.
- | The report of the review of the *Western Australian College of Teaching Act 2004* under section 90 of that Act was completed.
- | Provided executive support to the Hon Hendy Cowan in completing a review of post-secondary agricultural education in Western Australia.
- | Registered 79 new and 190 existing institutions/providers delivering education and training services in the areas of higher education, non-government education, international education and vocational education and training.
- | Ongoing implementation and moderation of the national standards including: Australian Quality Training Framework (AQTF); the National Code of Practice for Registration Authorities and Providers of Education and Training to Overseas Students (The National Code); and National Protocols for Higher Education Approval Processes (National Protocols).
- | Commenced the implementation of the Joint Ministerial Council's national re-registration process of all registered international education providers.
- | Managed the inaugural assessment process for a submission, under the *Higher Education National Protocols*, to establish a "greenfield" private university.

- Reviewed risks associated with the closure of Registered Training Organisations (RTOs) and collected student results from RTOs for the first time with a newly implemented Client Qualification Register (CQR).
- \$312 million in grants, subsidies and other payments to non-government schools, with the majority (approximately \$274 million) being allocated as general per capita grants for recurrent purposes.
- \$26.5 million was made available through the Low Interest Loan Scheme to assist capital development projects at non-government schools and the University of Notre Dame Australia.
- Convened the inaugural meeting of the WA International Student Forum including students, peak education provider bodies and relevant government agencies, opened by the Minister for Education.



Profile and Operational Structure

MISSION

Proactively support the development of Western Australia's education and training systems for the benefit of students and the State through provision of relevant regulation, funding and policy advisory services.

VISION

To be recognised as Australia's leader in the provision of services to education and training sectors.

VALUES

The Department has developed guiding principles that are specific to its work and communicate how it goes about achieving its goals. These guiding principles underpin support for the wider Western Australian Government goals. The guiding principles are:

- ▮ *Being **proactive** in supporting change where it is needed and making a difference through the services, advice and assistance that the Department provides.*
- ▮ *Being **responsive** and flexible to changing needs and being able to take action quickly without undue formality.*
- ▮ ***Advancing** continual improvement in services to the Western Australian education and training community and the outcomes for Government.*
- ▮ ***Investing** in our people appropriately through a systematic approach to continual improvement and satisfaction.*

ENABLING LEGISLATION

The Department of Education Services was established in July 1996 under Section 35 of the *Public Sector Management Act 1994* as a department of the Public Service. The Department was created through the amalgamation of several education agencies and areas of responsibility including higher education, non-government education and international education. In July 2006 the Department formally assumed responsibility for the Office of the Training Accreditation Council.

RESPONSIBLE MINISTER

During the reporting period, the Hon Dr Elizabeth Constable MLA, Minister for Education; Tourism was responsible for the Department of Education Services. The Hon Peter Collier MLC Minister for Energy; Training and Workforce Development was responsible for the Department's functions relating to the Training Accreditation Council.

PRINCIPAL STAKEHOLDERS

- | | |
|---|--|
| ▮ Minister for Education | ▮ International Education Providers |
| ▮ Minister for Training and Workforce Development | ▮ Individual Non-Government Schools |
| ▮ Minister Assisting Minister for Education | ▮ Non Self-Accrediting Higher Education Institutions |
| ▮ Association of Independent Schools of WA Inc | ▮ Organisations, Agencies and others represented on the WAAETC and the RREAC |
| ▮ Australian Universities Quality Agency | ▮ Other State Government Departments |
| ▮ Catholic Education Office of WA | ▮ Other State and Territory Registering/ Course Accrediting Bodies |
| ▮ Chair and Deputy Chair RREAC | ▮ Registered Training Organisations |
| ▮ Commonwealth Department of Education, Employment and Workplace Relations | ▮ Seventh Day Adventist Schools (WA) Inc |
| ▮ Commonwealth Department of Immigration and Citizenship | ▮ State Training Board |
| ▮ Community/consumers of education and training in rural and remote areas of WA | ▮ Swan Christian Education Association Inc |
| ▮ Curriculum Council | ▮ Training Accreditation Council |
| ▮ Funders and providers of education and training in rural and remote areas of WA | ▮ The Anglican Schools Commission Inc |
| ▮ Industry Bodies and Associations | ▮ Western Australian Universities |

ADMINISTERED LEGISLATION

The Department is responsible for the following legislation in accordance with the allocation of legislation to portfolios. (Government Gazette No 134, July 2009):

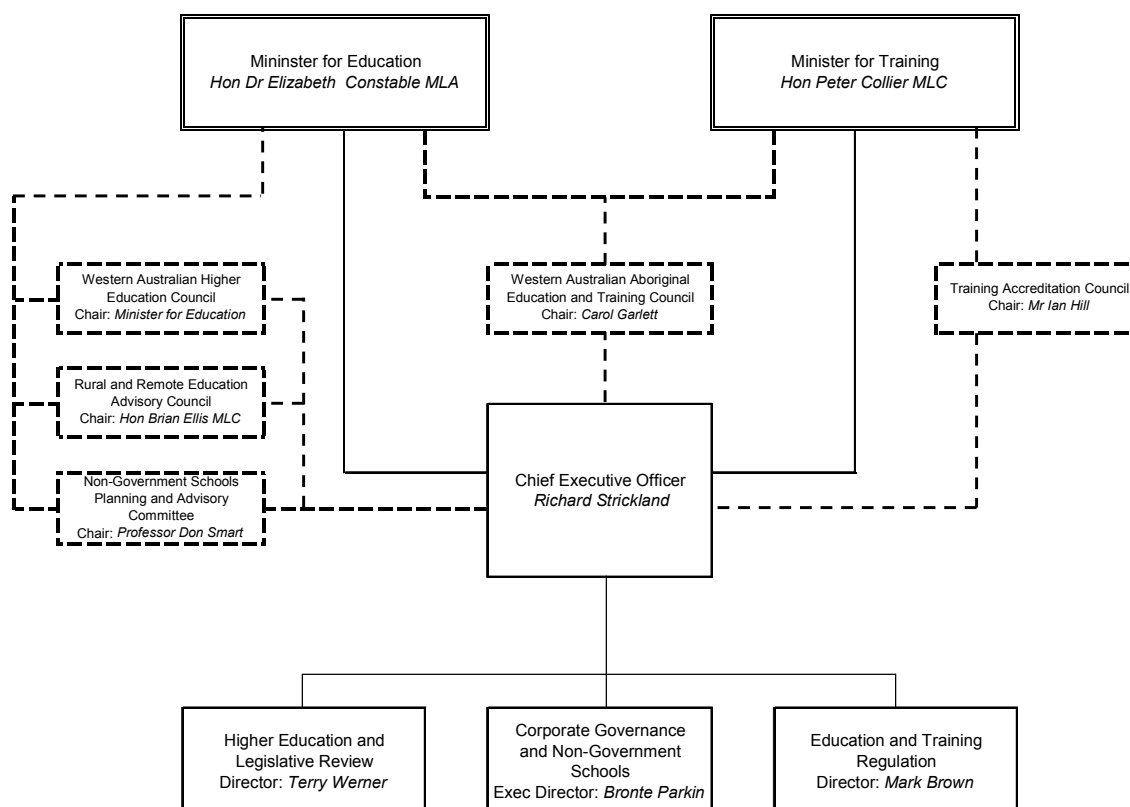
- ▮ *Curtin University of Technology Act 1966*
- ▮ *Edith Cowan University Act 1984*
- ▮ *Education Service Providers (Full Fee Overseas Students) Registration Act 1991*
- ▮ *Hale School Act 1876*
- ▮ *Higher Education Act 2004*
- ▮ *Murdoch University Act 1973*
- ▮ *Murdoch University Planning Board Act 1970*
- ▮ *School Education Act 1999* (Part 4 and other provisions of the Act as they apply to students enrolled at non-government schools)
- ▮ *University Building Act 1938*
- ▮ *University Buildings Act 1930*
- ▮ *University Buildings Act 1952*
- ▮ *University Colleges Act 1926*
- ▮ *University of Notre Dame Australia Act 1989*
- ▮ *University of Western Australia Act 1911*
- ▮ *Vocational Education and Training Act 1996* (Part 4 Division 1)
- ▮ *Western Australian College of Teaching Act 2004*

LEGISLATION IMPACTING ON THE DEPARTMENT'S ACTIVITIES

In the performance of its functions, the Department of Education Services complies with the following relevant written laws:

- ▮ *Auditor General Act 2006*
- ▮ *Corruption and Crime Commission Act 2003*
- ▮ *Disability Services Act 1993*
- ▮ *Education Services for Overseas Students Act 2000*
- ▮ *Electoral Act 1907*
- ▮ *Equal Opportunity Act 1984*
- ▮ *Financial Management Act 2006*
- ▮ *Freedom of Information Act 1992*
- ▮ *Immigration Act 1958*
- ▮ *Industrial Relations Act 1979*
- ▮ *Minimum Conditions of Employment Act 1993*
- ▮ *Occupational Safety and Health Act 1984*
- ▮ *Public Interest Disclosure Act 2003*
- ▮ *Public Sector Management Act 1994*
- ▮ *Salaries and Allowances Act 1975*
- ▮ *State Records Act 2000*
- ▮ *State Supply Commission Act 1991*
- ▮ *Worker's Compensation and Injury Management Act 1981*

ORGANISATION CHART - DEPARTMENT OF EDUCATION SERVICES



OPERATIONAL STRUCTURE

The Department's objectives and outcomes are delivered through three Directorates: Corporate Governance and Non-Government Schools; Education and Training Regulation; and Higher Education and Legislative Review. The activities and outcomes achieved by the Directorates are detailed in the Agency Performance Chapter - Report on Operations. Each Directorate reports to the Chief Executive Officer for the day-to-day operations of the Department.

The Corporate Executive group, comprising the Chief Executive Officer, the Directors, the Chair of the AETC, the Chief Finance Officer, the Coordinator of Strategic Planning and Governance, and the Manager of Administrative Services meets monthly to consider key planning and policy matters relating to corporate governance of the Department including financial and human resource management issues, risk management, and other key issues central to its operations. Various standing committees and special project groups are established and meet as required.

Membership details of the Ministerial Councils and Committees are included at Appendix 11.

SENIOR OFFICERS PROFILE

Mr Richard Strickland, Chief Executive Officer Richard has held positions of Executive Director Planning and Resources, Executive Director Policy and Evaluation and Director of TAFEWA in the Department of Education and Training. Prior to that he held the position of Manager Personnel Operations and University Statistician at The University of Western Australia. He commenced Acting as Chief Executive Officer in the Department of Education Services in July 2005 and was appointed to the position in August 2006.

Mr Bronte Parkin, Executive Director, Corporate Governance and Non-Government Schools Bronte has extensive senior experience in education administration and policy development, most recently in the non-government schools area, which followed previous work in educational research and planning after teaching physics, chemistry and general science. His current responsibilities include oversight of the Department's corporate services, business development and corporate governance; and funding to non-government schools.

Mr Terry Werner, Director, Higher Education and Legislative Review Terry joined the WA public service in 1982 and has held a range of senior positions in this Department, the Department of the Premier and Cabinet and the Department of Education and Training. Prior to 1982 he held lecturing positions in faculties of education at the Western Australian Institute of Technology (now Curtin University), Melbourne University and (the then) Melbourne State College.

Ms Mark Brown, Director, Education and Training Regulation Mark has been involved in education in WA since 1974 as a primary school teacher, lecturer, curriculum and assessment officer, and as a curriculum manager and director. He managed the registration of non-government schools from 2007 before being appointed as Director of the expanded Education and Training Regulation Directorate in this Department in December 2009.

Ms Carol Garlett, Director and Chair, Western Australian Aboriginal Education and Training Council (WAAETC) Carol has extensive experience in Aboriginal Education as an Administrator, educator and parent. Prior to her appointment as Chair WAAETC she was the District Director for government schools in the Kimberley region. She is actively involved in Aboriginal Education and Training at local, state and national levels.

SUMMARY OF DIRECTORATE OPERATIONS

DIRECTORATE	KEY OPERATIONS
Corporate Governance and Non-Government Schools Directorate	<p><i>Corporate Governance</i></p> <ul style="list-style-type: none"> Managing human resources including supporting recruitment, staff management and retention, payroll and performance management Managing finances including the Department's budget, accounts and procurement processes Providing strategic, business planning and corporate communications services as well as overseeing compliance with Public Sector Standards and government requirements Providing information technology and records management services <p><i>Business Development</i></p> <ul style="list-style-type: none"> Managing the State Government's program to support WA international education including funding Perth Education City to market the WA brand off-shore and the State Government website for students Overseeing information planning to ensure the Department's functions are appropriately supported by business systems Undertaking research and analysis to support policy development across the Department <p><i>Non-Government Schools</i></p> <ul style="list-style-type: none"> Administering State Government per capita grants to non-government schools and a range of other grants as required Managing a Low Interest Loan Scheme to the non-government school sector Providing advice to the Minister and Government and participating in the development of state and national policy on funding of non-government schools
Education and Training Regulation Directorate	<ul style="list-style-type: none"> Registering and re-registering non-government schools and considering applications for the establishment of new non-government schools Endorsing community based courses for students in Years 11 and 12 and managing applications for exemption from non-government school enrolment Registering and monitoring education and training providers in the VET sector and non-university higher education sector Registering and monitoring Registered Training Organisations (RTOs), higher education providers, schools and English language colleges delivering education and training services to international students Accrediting nationally recognised courses in the VET and higher education sectors Approving skills recognition agents and issuing trade certificates through skills recognition Providing information sessions to assist RTOs to understand the AQTF and the registration process and acting on complaints relating to the AQTF Providing an interactive annual industry workshop for non self-accrediting higher education providers, Higher Education Advisory Committee (HEAC) members and chairs, and government regulators. Providing advice to Ministers and Government and participating in the development of state and national policy on quality arrangements in the VET sector, the international education industry and regulation of non-government schools Providing secretariat support to the Training Accreditation Council and HEACs

Higher Education and Legislative Review Directorate	<ul style="list-style-type: none"> Overseeing the statutory review of education and training legislation and the drafting of new or amending legislation Liaising with universities and providing support in the administration of the universities' Acts Monitoring the provision of higher education for the purpose of strategic planning and undertaking reviews, projects and feasibility studies from time to time at the request of the Minister. Supporting the operation of the Western Australian Higher Education Council Providing advice to the Minister and Government and participating in the development of state and national policy on quality and standards in higher education
Across the Department	<ul style="list-style-type: none"> Undertaking research on education and training matters Providing advice to Ministers and Government on Aboriginal education and training and rural and remote education and training through the Western Australian Aboriginal Education and Training Council and the Rural and Remote Education Advisory Council



Performance Management Framework

CONTRIBUTION TO GOVERNMENT GOALS

The Department of Education Services has aligned its vision, mission, principles and goals to meet the State Government's goal and in so doing demonstrates its commitment to achieving the best opportunities for current and future generations in Western Australia.

Service 1: Regulation, Funding and Policy Advice

Provision of regulatory, funding and policy advisory services, as required by legislation or government policy, to support delivery of quality services by registered and/or accredited education and training providers.

GOVERNMENT GOAL

Outcomes-Based Service Delivery

Greater focus on achieving results in key service delivery areas for the benefit of all Western Australians.

DESIRED OUTCOME

Registered and/or accredited education and training providers comply with the appropriate legislative and/or other regulatory requirements.

DEPARTMENT'S RESPONSE

Regulation

- Implementation of legislative responsibilities, standards and quality assurance measures in higher education, international education, non-government schools and vocational education and training.
- Appropriate quality assurance processes in place for the non-government school, higher education, international education and vocational education and training sectors.
- Support the Training Accreditation Council in the execution of its legislative responsibilities.

Funding

- Provision of appropriate funding services to the non-government school sector to support delivery of quality and accessible education.

Policy Advice

- Play a leading role in developing the State Government's strategic relationship with the higher education sector in Western Australia.
- Review applications for the establishment of new non-government schools taking into account the impact on existing schools and recommend to the Minister accordingly.
- Provide practical advice on improving the delivery and quality of education and training for Aboriginal and Torres Strait Islander people and improved access to education and training services in the rural and remote areas of the State.
- Facilitate cross-sectoral initiatives to enhance the provision of education and training services in the State taking into account needs of education and training in regional communities.
- Representation at national forums in the areas of higher education, international education and vocational education and training, and contribute to relevant policy development.

CHANGES TO THE OUTCOME BASED MANAGEMENT FRAMEWORK

The Department's Outcome Based Management Framework did not change during the reporting period.

SHARED RESPONSIBILITIES WITH OTHER AGENCIES

Corporate Services

The Department has a Service Level Agreement with the Curriculum Council for the provision of Information Technology services.

The Department receives support from the Education and Training Shared Services Centre (ETSSC) for a range of Business and Management Support Services. These include Accounts Processing; Personnel and Payroll; Business Systems; Human Resource Services; and Financial Accounting Services. The Department participates in regular Shared Services Governance and Client Management Council meetings.

AGENCY PERFORMANCE

Report on Operations

FINANCIAL TARGETS: ACTUAL PERFORMANCE COMPARED TO BUDGET TARGETS

	2009-10 TARGET ⁽¹⁾ \$000	2009-10 ACTUAL \$000	VARIATION ⁽²⁾ \$000
Total cost of services (expenses limit) (sourced from Income Statement)	36,907	28,923	(7,984) ^(a)
Net cost of services (sourced from Income Statement)	20,230	12,897	(7,333) ^(b)
Total equity (sourced from Balance Sheet)	(44,952)	(42,681)	2,271 ^(c)
Net Increase / decrease in cash held (sourced from Cash Flow Statement)	74	644	570 ^(d)
Consistency between internal asset management plan and the capital works program	176	15	(161) ^(e)
	Number	Number	Number
Approved full-time equivalent (FTE) staff level	57	62 ^(f)	4

(1) As specified in the 2009-10 Budget Statements.

(2) Further explanations are also contained in the Notes to the Financial Statements (pp46-69).

(a) The decrease occurred as a result of a lower interest rate charged on the debt portfolio, which resulted in a reduction in interest payable to the Western Australian Treasury Corporation (WATC). \$5 million was refunded accordingly to the Department of Treasury and Finance (DTF).

(b) The decrease of \$7.333million is as a result of the application of Accounting Standard AASB139, and (a) above.

(c) The increase in equity for the year occurred as a result of a net increase in cash and a lower debt portfolio with WATC.

(d) A net increase in cash held of \$570,000 is attributed to the receipt of a \$500,000 grant from the Department of Education Employment and Workplace Relations on 28 June 2010, for the "Parental and Community Engagement Program 2010-2012".

(e) The office fit-out and office equipment programs were initially budgeted at \$176,000; however expenditure was postponed as a result of a lack of clarity regarding the timing of the phased implementation of the new strategic initiative – "Independent Public Schools".

(f) The increase in FTEs from 57 to 62 was a result of the new methodology introduced by the DTF, which required the inclusion of all staff paid through the agency's payroll system (e.g. contractors, Council chair/s and Council member/s).

SUMMARY OF KEY PERFORMANCE INDICATORS: ACTUAL PERFORMANCE COMPARED TO BUDGET TARGETS

	2009-10 TARGET ⁽¹⁾	2009-10 ACTUAL	VARIATION ⁽²⁾
Outcome: <i>Registered and/or accredited education and training providers comply with the appropriate legislative and/or other regulatory requirements.</i> Key Effectiveness Indicators: ^(a) <ul style="list-style-type: none"> Percentage of non self-accrediting higher education institutions complying with accreditation and authorisation requirements of the <i>Higher Education Act 2004</i> 100.0% 100.0% - Percentage of non-government schools complying with registration requirements of the <i>School Education Act 1999</i> 80.0% 97.4% 17.4% Percentage of providers of education services to full fee international students complying with registration requirements of the <i>Education Service Providers (Full Fee Overseas Students) Registration Act 1991 (WA)</i> and the <i>Education Services for Overseas Students Act 2000 (C'th)</i> 100.0% 96.7% (3.3%) Percentage of Registered Training Organisations (RTOs) compliant with the Australian Quality Training Framework (AQTF) standards for RTOs 100.0% 98.9% (1.1%) 			
Service: Regulation, Funding and Policy Advice Key Efficiency Indicators: <ul style="list-style-type: none"> Cost of regulatory services per registered provider/institution ^(b) \$6,225 \$6,178 (\$47) Cost of funded services per funded unit \$7.32 \$9.60 \$2.28 Hourly cost of providing policy advice and support \$102.61 \$105.03 \$2.42 			

(1) As specified in the 2009-10 Budget Statements.

(2) Explanations for the significant variation between target and actual results are presented in pp 71-75.

- (a) The targeted percentage of non-government schools which comply with registration requirements revised downwards during 2009-10, due to a change in the methodology for measuring the number of schools not complying, which now includes the number of schools re-registered with conditions and the number of schools given directions to comply with a registration standard. For 2009-10, the actual number of schools re-registered with conditions was considerably lower than expected.
- (b) The variation between the 2009-10 Target and Actual figures is due to the increase in the total cost of services for the department for the year (used in the calculation of the efficiency indicators) which was proportionately higher than the increase in funded units.

Report on Operations by Program Area

The Department of Education Services has four main operational areas with key objectives through which the agency level and Government goals are achieved. These program areas form the basis of the work undertaken by the Department and provide evidence of what has been achieved during the reporting period and for what purpose.

Each program area is linked to specific Government Goals and this section details the key objectives and key achievements in attaining these goals.

PROGRAM AREA		KEY OBJECTIVE
1	Education and Training Regulation	To enhance public confidence in the quality and integrity of education and training through effective and efficient regulation.
2	Funding Services	To improve access to a world-class education system by allocating grants and subsidies to non-government schools, supporting diversity and parental choice.
3	Strategic Policy and Legislative Services	To position the education and training system to meet the needs of the State through the provision of strategic policy advice, research, planning and legislative services across relevant sectors.
4	Workforce and Organisational Capability	To ensure an innovative and effective organisation through responsive leadership and governance with a focus on developing and valuing staff.



1. EDUCATION AND TRAINING REGULATION

Key Objective: To enhance public confidence in the quality and integrity of education and training through effective and efficient regulation.

Government Goal:

Outcomes-Based Service Delivery

Greater focus on achieving results in key service delivery areas for the benefit of all Western Australians.

Key Achievements 2009-10:

- | Ministerial approval obtained for applications to establish 2 new non-government schools and to provide additional educational levels at 6 existing schools.
- | 71 independent schools and 28 Catholic schools were inspected under the registration renewal provisions of the School Education Act 1999.
- | 121 initial, and renewal of, vocational education and training (VET) registration applications were endorsed, 290 extensions to scope applications were endorsed, and 120 VET courses were accredited or re-accredited by the Training Accreditation Council.
- | Continued implementing risk mitigation strategies to support the integrity of the vocational education and training environment in Western Australia, with strategic industry audits in the Training and Assessment and Security industries and undertook the first collection for the Client Qualifications Register.
- | Implemented changes resulting from amendments to the *Vocational Education and Training Act 1996*.
- | Implemented the AQTF Quality Indicator data collection and applied risk management approaches.
- | Continued engagement with licensing and regulatory bodies and established a further 4 industry agreements relating to cross industry collaboration.
- | 10 non self-accrediting higher education institutions were registered/re-registered and 62 new higher education courses were accredited/re-accredited.
- | Implemented the inaugural Higher Education Industry Workshop to develop a common understanding of the changing regulatory environment, quality assurance and challenges arising from the approval process.
- | Managed the inaugural application in Australia, under Higher Education Protocol D, to establish a private "greenfield" university.
- | Provided information to the Australian University Quality Agency (AUQA) for the Cycle 2 Audit of Government Higher Education Accreditation Agencies in relation to meeting all recommendations from the Cycle 1 AQUA audit (1996). Further, provided intelligence and strategic information to AQUA on good regulatory practice and amendments required to the *National Protocols for Higher Education*.
- | Continued convening Higher Education Advisory Committee (HEAC) Chairs Forums to ensure moderation and consistency with the higher education approval process.
- | 7 new international education providers were registered, 10 existing providers were re-registered and 1,391 courses were registered/re-registered for delivery to international students.
- | 13 international education providers were re-registered as part of the national re-registration program, 4 providers were cancelled, 12 providers relinquished registration, and a further 12 applications were denied.
- | Developed and implemented a strategy for auditing high risk international education service providers - completed 4 of the 6 high risk strategic audits.

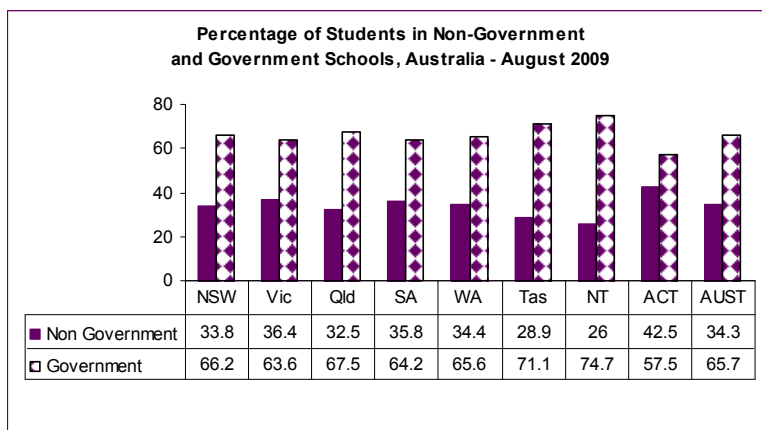
SCHOOL EDUCATION

Registration of Non Government Schools

Growth of sector

The total number of registered schools at the February 2010 census date was 309, a decrease of two since the previous year. Enrolments increased by 2.4 percent over the same period.

The percentage of all pre-primary, primary and secondary students in Western Australia who attend non-government schools increased to 34.4 percent in August 2008. The national figure is 34.3 percent.



Source: ABS, 4221.0, Schools Australia, 2009

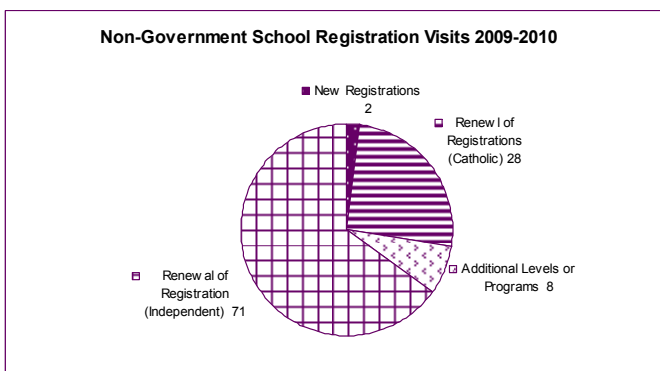
Registration activity

The registration and renewal of registration of non-government schools is performed in accordance with the standards and other requirements of the *School Education Act 1999* and *School Education Regulations 2000*. Elaboration of details for the standards and other requirements (collectively referred to as 'registration criteria') are approved by the Minister for Education.

In 2009-10, two (2) new non-government schools were registered: one (1) independent school and one (1) Catholic school; and six (6) established independent schools were registered for additional educational levels; two (2) schools were approved at new locations and one (1) school was registered for an additional campus.

Seventy-one independent schools were inspected and re-registered under the registration renewal provisions of the Act. Of these, four (4) schools were re-registered with one or more conditions applied.

The Act provides for the Minister for Education to make an agreement with the governing body of a system of non-government schools for the supervision of the schools in the system. Such an agreement exists between the Minister and the Catholic Education Commission of WA in which the Director of Catholic Education is responsible for carrying out audits of all Catholic schools for compliance with the registration criteria and making recommendations to the Minister on their registration or renewal of registration. Twenty-eight Catholic schools were audited under this arrangement in 2009.



Advance determinations: Recommendations of the Non-Government Schools Planning Advisory Committee

Three Committee meetings were held during the reporting period: 14 September 2009, 26 November 2009 and 4 May 2010. Based on the Committee's recommendations the Minister approved the establishment of five new non-government schools, and the introduction of additional levels at two schools.

One application for a new school was not approved.

Three schools made applications to the Minister for a review of her decision not to approve registration for an additional education level. The Minister reversed her decision for two of the schools but confirmed her decision for one school.

Endorsement of Community Based Courses

Community Based Courses are authorised under Sections 11B (1) (e), 11B (2) and 11B (3) of the *School Education Act 1999*. Students participate in these courses as one of the options for meeting the requirement for enrolment in compulsory education, either through an arrangement to be entered into for a student "to attend at some place other than the school at which he or she is enrolled to participate in activities that are part of an educational course of the school" (as in section 24 of the Act), or under a Notice of Arrangements (as provided for in Section 11D of the Act, which does not entail enrolment at a school). Only those Community Based Courses that have been prescribed by a Ministerial order and published in the *Government Gazette* are able to be accessed in this manner by students in their sixteenth and seventeenth year.

During 2009-10, two new courses were inspected and endorsed by the Minister and the endorsements for a further five courses were extended for further periods. As a result of a change to funding arrangements, the endorsements for six courses were revoked. It is noted that the two new course endorsements were actually a result of re-structuring two of the courses which had their endorsements revoked.

VOCATIONAL EDUCATION AND TRAINING

Registration and Accreditation in the Vocational Education and Training Sector

Training Accreditation Council

The Training Accreditation Council (TAC) is Western Australia's State Registering Body and Course Accrediting Body and is responsible for quality assurance and recognition of vocational education and training services in Western Australia. The TAC is committed to being the national leader in the strategic management of the recognition and quality assurance of training, including associated policies, services and standards in the vocational education and training sector and to providing practical, efficient and responsive support for government, industry training providers and the community.

The TAC implements a robust auditing regime to assure the quality of vocational education and training services in Western Australia. Feedback from the TAC Client Satisfaction Survey for the 2009-10 reporting period showed that 94 percent of respondents found that the audit process added value to their business, and 95 percent of respondents indicated that overall they were satisfied or very satisfied with the audit.

The ongoing implementation of the amendments to the *Vocational Education and Training Act 1996* and the *Vocational Education and Training (General) Regulations 2009* ("general regulations") was a major focus for the Department. The new general regulations include the inclusion of 'National model clauses' for the registration of training providers and accreditation of courses.

The TAC, through the Department, continued to review risks associated with the closure of Registered Training Organisations (RTOs) and collected student results from RTOs for the first time with its newly implemented Client Qualification Register. The register is a mechanism by which a permanent record of student achievement can be maintained. The register will ensure continued access to student records and ongoing verification of achievement from all providers regardless of whether they may have ceased to operate. RTOs are required to report student achievement twice a year at 30 June and 31 December.

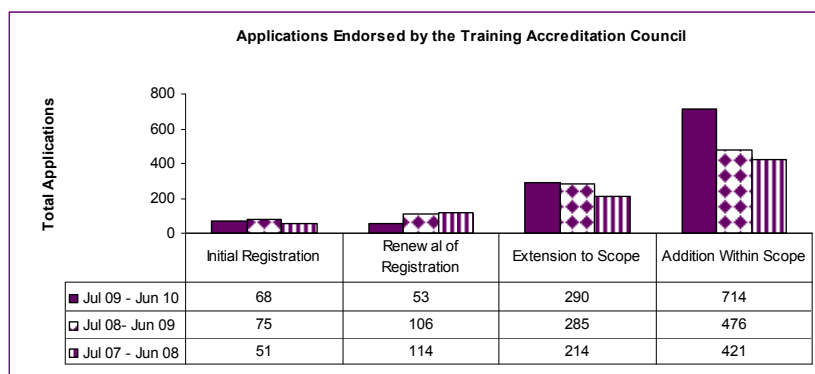
RTOs also submitted, for the first time, their Quality Indicator Data as it relates to Learner Engagement and Employer Satisfaction - a requirement under the AQTF Standards. The Department will use this data to inform the risk assessment of applications.

Registration activity

There were 1,728 RTOs registered to deliver training in Western Australia on 30 June 2010. A total of 547 were organisations registered with the TAC, with the remainder (1,181) registered to deliver in Western Australia under national recognition arrangements. Sixty-six of the 547 organisations registered with the TAC were also delivering vocational education and training under the AQTF in countries other than Australia.

During the reporting period the overall number of organisations having indicated delivery in Western Australia has increased since the last reporting period from 1,663 in 2008-09 to 1,728 in 2009-10. The total number of RTOs registered by the TAC remained fairly steady with a 7 percent increase from 508 in 2008-09 to 547 in 2009-10.

During the year the TAC endorsed the following applications: 68 initial registrations; 53 renewal of registrations; 290 extensions to scope; and 714 notifications received from RTOs to add courses/qualifications within their current scope.



Audit strategy activity

The TAC, as part of its ongoing improvement process, implements a continuous audit strategy. This approach ensures a more flexible and fluid audit strategy with the ability to address identified issues as they arise, complement the national approach to risk management and enables monitoring on an ongoing basis. The strategy includes regulatory audits such as registration audits, follow up audits and audits in response to complaints.

The Department managed the National Strategic Industry Audit of the Certificate IV in Training and Assessment on behalf of the sector during 2009-10. Additionally, the TAC endorsed a WA strategic industry audit of the Security Industry. The Security Industry Audits have had strong support from the industry, especially with the provision of industry advisors to provide technical advice during the audits.

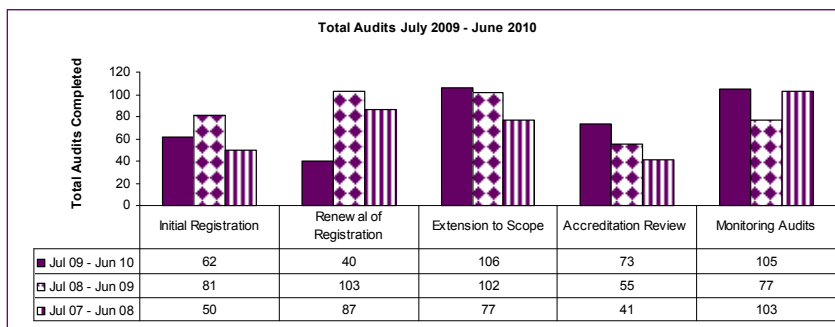
Audits conducted by the TAC were in accordance with the AQTF 2007 Standards for State and Territory Registering Bodies and the Audit Handbook (a reference guide for conducting audits of training organisations against the AQTF 2007 Essential Standards for Registration). Non compliances identified at audit were processed in accordance with the National Guideline for Managing Non-Compliance.

Applications to the TAC from training organisations are risk assessed in line with the National Guideline for Risk Management and the Western Australian Supplementary Risk Indicators. Risk indicators focus on the performance of the RTO delivering quality skills outcomes; and supplementary indicators, which apply to the operational context of the RTO, determine the type, scale and scope of an audit.

During the 2009-10 reporting period, a total of 726 RTO risk assessments were undertaken by the TAC - an increase of 20 percent when compared with 604 assessments in 2008-09. Of the 726 risk assessments, 524 (72 percent) did not require an audit and the remaining 202 were audited through an external desk audit and/or a site visit audit.

A total of 386 audits were undertaken in the reporting period. This represents a decrease of 7 percent from the 2008-09 period. There was a significant decrease (61 percent) in renewal of registration audits, due to the lower number of registrations expiring in this period compared with 2008-09.

The number of monitoring audits undertaken returned to the 2007-08 levels. The lower number of monitoring audits in 2008-09 was a result of more organisations having renewal of registration audits, rather than being due for follow up audits.



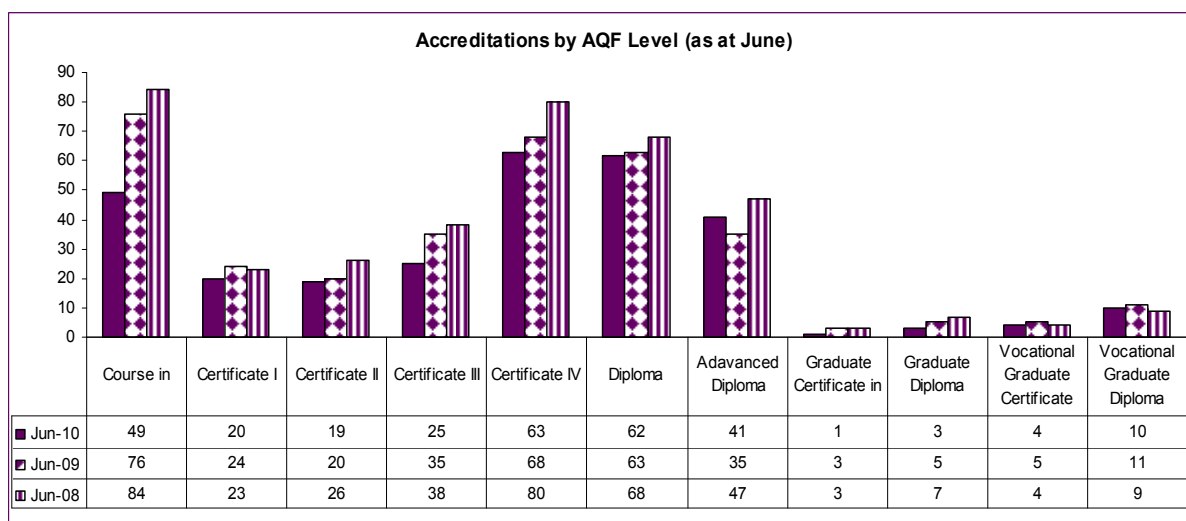
Course accreditation activity

At 30 June 2010 there were 297 accredited courses in Western Australia. The number of accredited courses continues to drop, from 389 in 2007-08, 345 in 2008-09, to 297 in this reporting period. This is an anticipated result, due to the continuous improvement in training packages meeting the needs of industry.

During 2009-10 the TAC approved a total of 120 courses for accreditation and re-accreditation, an increase of over 25 percent from the previous reporting period. The following data summarise the accreditation activity undertaken in the reporting period.

Course Accreditation Activity July 2009 – June 2010	
Activity	Number of Courses
Courses accredited	23
Courses re-accredited	97
Courses extended	78
Courses expired	161

The following chart shows the number of accreditations by AQF qualification level has remained relatively unchanged compared with the previous reporting period.



HIGHER EDUCATION

Accreditation and Registration of Non Self-Accrediting Higher Education Institutions

The Department implements the *National Protocols for Higher Education Approval Processes* in Western Australia through the *Higher Education Act 2004*, the *Higher Education Regulations 2005* and the *Higher Education Guidelines for Accreditation of Higher Education Courses and Authorisation of Non-University Institutions to Provide Higher Education Courses*.

As part of the Department's continual quality improvement model for higher education accreditation and authorisation processes, it has implemented all recommendations made by the Australian Universities Quality Agency (AUQA) from the 2006 Cycle 1 audit.

The Department has worked closely with the Higher Education Advisory Committee (HEAC) Chairs Forum to moderate higher education application assessments and approval processes. The HEAC Chairs Forum has also assisted the Department to implement its highly successful annual Higher Education Interactive Workshop which facilitated information sharing, networking, discussion and analysis across a wide range of higher education stakeholders.

As part of the 2010 Cycle 2 AQUA audit of the government accreditation agencies in each state and territory, the Department has reported to AQUA on all implemented recommendations from the Cycle 1 audit. The Department outlined and ranked several of its good practice higher education regulatory processes. Further, it provided strategic intelligence on the deployment and revision of the National Protocols for Higher Education for consideration by AQUA. In particular, regulatory analysis and feedback was offered in regarding to the deployment of Protocol D in relation to the need to review the criteria for the establishment of an Australian university, also the criteria for new institutions to use the title "university college" as a greenfield university.

Accreditation and registration activity

During the reporting period, the Department registered/re-registered 10 non self-accrediting institutions to deliver 62 higher education awards. There were a further 6 applications covering 17 awards in that period that were still being assessed. Seven other private providers made initial general enquiries to the Department regarding accreditation and authorisation.

INTERNATIONAL EDUCATION

Regulation of International Education Providers

Western Australia's reputation as an internationally recognised study destination for overseas students was maintained by ensuring that all registered institutions provide quality services to overseas students and that the standards of delivery are monitored for compliance. The benefits derived from the international education industry largely depend on the quality of the service it provides to overseas students and on public confidence in its integrity.

As an outcome of the Joint Ministerial Council (Ministerial Council for Education, Employment, Training and Youth Affairs, and the Ministerial Council for Vocational Training and Employment), the national re-registration process of all international education service providers commenced on 15 March 2010 following a delay with the passing of enabling legislation through the Senate. In parallel with such regulatory initiatives, the Commonwealth Government also completed structural changes to Australia's skilled migration program. The Department heightened its awareness and responsiveness to critical risk indicators, namely demonstrated capacity, quality assurance, provider and student profile, consumer protection and financial viability.

The Department continued its schedule of compliance audits (including bi-lateral auditing with Department of Employment and Workplace Relations (DEEWR) officers) of institutions. The audits included compliance assessments and risk analysis, involving evidence of financial viability, provider capacity for student delivery, non-compliance activity, commercial standing and probity as required under the State's *Education Service Providers (Full Fee Overseas Students) Registration Act 1991 (ESPRA)*, the Commonwealth's *Education Services for Overseas Students Act 2000 (ESOS)*, and *The National Code of Practice for Registration Authorities and Providers of Education and Training to Overseas Students (The National Code)*.

Strategic audits for high risk providers were developed and implemented throughout 2009-10. The outcomes will assist the Department with improved quality assurance and heighten the integrity underpinning Western Australia's international education industry.

Regulation activity

During the reporting period, there were 3,169 courses registered/re-registered for delivery across 116 international education service providers in WA. Four providers were cancelled as an outcome of increased regulatory benchmarks. Twelve providers relinquished registration over the period and a further 12 applications were denied as they were unable to reach the increased quality assurance benchmarks for registration. Eight applications remain pending and are likely to be finalised over the ensuring reporting period.

Conciliation and mediation services

The Department continued to provide proactive conciliation and mediation services for international students studying in Western Australian registered institutions. The longer term benefits of such services were noted and recognised by the Hon Bruce Baird in his independent review of the Commonwealth Government's *ESOS Act 2000*.

Over the 2009-10 reporting period, approximately 300 international students accessed the Department's conciliation and mediation services.



2. FUNDING SERVICES

Key Objective: To improve access to a world-class education system by allocating grants and subsidies to non-government schools, supporting diversity and parental choice.

Government Goal:

Outcomes-Based Service Delivery

Greater focus on achieving results in key service delivery areas for the benefit of all Western Australians.

Key Achievements 2009-10:

- | Total financial assistance provided to non-government schools in 2009 was 25.53 percent of the adjusted Average Government School Recurrent Cost (AGSRC) Index.
- | \$273.657 million in per capita grants allocated to non-government schools.
- | \$13.255 million in supplementary per capita grants allocated to students with disabilities attending non-government schools.
- | \$3.094 million in funding to the Non-Government School Psychology Service.
- | \$26.5 million in low interest loans advanced to non-government schools and the University of Notre Dame Australia.
- | Seven Western Australian Government sponsored scholarships were awarded to higher education students.

SCHOOL EDUCATION

Provision of Funding Services to Non-Government Schools

State Government Financial Support

Based on principles agreed between the State Government and the non-government school sector in the review of the AGSRC and funding distribution model in 2003-04, funding in 2010 was such that total financial assistance was 25.53 percent of the adjusted AGSRC.

General Per Capita and Other Funding

\$273.657 million or 89 percent of recurrent funding was allocated on a general per capita basis to assist registered non-government schools. The increased expenditure in 2009-10 reflected the increase in non-government school enrolments and indexation of the grants. The 2010 per capita grants were indexed by 9.56 percent. The specific rates paid in 2009 and 2010 are included in Appendix 8.

\$13.255 million or 4.3 percent of recurrent funding was allocated to supplement the general per capita grants for qualifying students with disabilities attending non-government schools. The amount also included a special grant for severely disabled students with high support needs, including hearing-impaired students enrolled at the Speech and Hearing Centre.

General and Special Education Per Capita grants paid to non-government schools in 2009-10 are shown for each school in Appendix 9.

Non-Government School Psychology Service

\$3.09 million was granted to the Catholic Education Office to administer the Non-Government School Psychology Service. The service employed 24.7 full time equivalent school psychologists and through them provided counselling and career guidance services to all non-government schools.

During the 2009-10 reporting period there were approximately 990 formal referrals made to the School Psychology Service. Overall the service had some 6,215 case contacts; of which 2,441 involved individual students. An analysis of the referrals shows that almost 50 percent are for reasons of students' learning, 27 percent for behavioural reasons and 23 percent for social and emotional reasons. This follows a similar trend from previous years. The service also provides professional development programs for teachers on a wide variety of topics including learning disorders and disabilities, student behaviour management, youth suicide prevention, drug education and crisis management planning.

Low Interest Loans

\$26.5 million was advanced in low interest loans for approved capital works at 28 non-government schools and the University of Notre Dame Australia. This assistance was made available under the Low Interest Loan Scheme through expenditure of \$3.57 million in interest subsidies. Of the \$26.5 million, \$23.227 million was for new works and \$3.273 million was for works in progress. A complete list of schools (including the University of Notre Dame Australia) that received low interest loans in 2009-10 is included in Appendix 10.

HIGHER EDUCATION

Government Scholarships

WA Government Japanese Studies Scholarships

The State Government has sponsored, for more than thirty-seven years, two Japanese Studies Scholarships for promising students to study at a university in Japan for up to twelve months. One scholarship is tenable at any university in Japan and the other at a university in Hyogo Prefecture. Each scholarship is valued at around \$40,000 - \$50,000 (Australian) depending on the exchange rate. Selection for the scholarships is based on a Japanese language proficiency test with short-listed applicants invited to discuss their proposed study program in Japan with the selection committee. Candidates are expected to have a well-developed study plan and provide some indication of how they expect their experiences in Japan will benefit the Western Australian community on their return.

WA Government/Curtin University of Technology Miri Scholarships

As an initiative of the then Premier, the State Government/Curtin University of Technology Miri Scholarships were established in 2003 to enable five young people a year from Miri in Sarawak to complete their undergraduate education at Curtin's Bentley campus. Thirty students have benefited from the scholarships to date. Travel and accommodation costs are met by the State Government and Curtin meets all tuition costs. Selection criteria were jointly developed by the Department and Curtin and, where necessary, the selection interviews are conducted by videoconference. The selection criteria include academic merit, reasons for wanting to complete the course in Perth, knowledge of areas of specialisation that might be enhanced in Perth, career knowledge and goals, perceptions about personal and professional benefits from a year in Perth and extra-curricular interests.

Curtin University Indigenous Scholarships

An amount of \$70,000 was allocated for the Indigenous Scholarship/Fellowship Scheme to enhance the leadership and research skills of outstanding Indigenous people through postgraduate research programs at Curtin University's Centre for Aboriginal Studies. Applicants are encouraged to undertake a three-year research program but in some circumstances a one-year fellowship may be offered. Applicants must meet all university entry criteria for postgraduate research programs. Guidelines for the scholarships take into account Curtin University's guidelines for postgraduate studies.



3. STRATEGIC POLICY AND LEGISLATIVE SERVICES

Key Objective: To position the education and training system to meet the needs of the State through the provision of strategic policy advice, research, planning and legislative services across relevant sectors.

Government Goal:

Outcomes-Based Service Delivery

Greater focus on achieving results in key service delivery areas for the benefit of all Western Australians.

Key Achievements 2009-10:

- | A new financial accountability framework to strengthen non-government school accountabilities was fully implemented during the year.
- | Negotiated the development of an instrument of delegation from the Training Accreditation Council to TVET Australia.
- | Assumed the lead role for the National Strategic Industry Audit of the Certificate IV in Training and Assessment on behalf of the National Quality Council.
- | Continued to provide key advice to national policy drivers through the National Consistency Action Group, a reporting committee of the National Quality Council, in relation to maintaining national consistency in VET regulation and audit practice.
- | Provided state representation on the joint National Senior Officials Committee/National Quality Council Joint Working Group which provided advice on changes to the Australian Quality Training Framework.
- | Provided representation on peak joint Commonwealth/State and Territory working groups and the State based working group for the implementation of the National VET Regulator.
- | Coordinated a bilateral discussion between the Commonwealth and the State on the impact of higher education on State planning and development.
- | Prepared the State submission to the Commonwealth on the Review of Regional Loading in higher education.
- | Provided strategic policy advice and participated in consultations with respect to the Commonwealth's reform agenda including its proposal to establish the Tertiary Education Quality and Standards Agency (TEQSA).
- | Provided executive support to Hon Hendy Cowan in completing a review of post-secondary agricultural education in Western Australia.
- | Convened the inaugural meeting of the WA International Student Forum including students, peak education provider bodies and relevant government agencies, opened by the Minister for Education.
- | Continued to provide key advice on international education national policy and regulatory matters through the International Quality Implementation Group
- | Chaired the Joint Committee on International Education which continued to provide high level strategic policy advice to Commonwealth, state and territory governments, key industry bodies and interest groups.
- | Completed a review of the *Western Australian College of Teaching Act 2004*.
- | Prepared drafting instructions for bills to amend the *Curriculum Council Act 2007* and the *Higher Education Act 2004*. Assisted the Minister in the passage of a bill to amend the *Higher Education Act 2004* through Parliament.
- | Production and distribution of the DVD entitled: Mungullah Best Start Kids Go To School.
- | Submission to the Western Australian Better Attendance: Brighter Futures Strategy.

SCHOOL EDUCATION

Strengthening Financial Accountability of Non-Government Schools

The Department of Education Services has strengthened non-government schools' compliance on legislated standards for governance and financial viability, and introduced a comprehensive auditing regime on schools' claims for per capita grants.

The areas strengthened include:

1. Governance: Improving governance arrangements and constitution requirements at independent non-government schools by updating and implementing new registration standards in 2010.
2. Financial Viability: Closer monitoring of the financial viability of independent non-government schools by developing and implementing a financial viability model (FVM). This involves collecting and more rigorously assessing key financial information for each school using data acquired as part of the re-registration process. An information agreement with the Commonwealth Department of Education, Employment and Workplace Relations (DEEWR) is currently being finalised which provides for the receipt of Financial Questionnaire data.
3. Funding Agreements and Funding Order: Signing of Funding Agreements between the Minister for Education and the Governing Body of each non-government school; gazetting of the *Non-Government Schools Funding Order 1999* in December 2009; and publication of guidelines expressing the principles of per capita funding.
4. Grants Auditing Program: Implementing a grants auditing program across all non-government schools with 82 schools audited during 2009-10 (the audit regime is designed to audit each school at least once every five years).
5. Risk Rating: Developing a "risk rating" for each non-government school to ensure more timely monitoring of potential financial and other issues within the normal period of a school's registration and during the re-registration process. The register maintains information about school compliance with registration standards and any results from the FVM and auditing program.

The above initiatives were all implemented in the 2009-10 financial year and are fully operational. Communication with key stakeholders, such as the Association of Independent Schools and the Catholic Education Office, has gained their support to implement these changes. The Department is aware of the COAG agenda to minimise bureaucratic red tape and duplication across public services, and has worked extensively with the DEEWR to collaborate on minimising duplication of similar processes.

Reviewing Independent Public Schools

In 2010 the Department was assigned the role of independent reviewer for schools granted Independent Public School status and school effectiveness reviews will be commenced in 2012 of the schools that introduced the flexibilities afforded them. Consultation with the Department of Education, including with the schools involved in this initiative, commenced in 2010 on the nature and scope of the reviews to be conducted.

VOCATIONAL EDUCATION AND TRAINING

New National Regulatory Arrangements for the VET Sector

At its meeting held on 7 December 2009, the Council of Australian Governments endorsed the establishment of a national regulator for the VET sector. The national regulator will be established under Commonwealth legislation and will be responsible for the registration and audit of registered training providers and accreditation of courses. A national standards council will also be established to provide advice to the Ministerial Council for Tertiary Education and Employment on national standards for regulation, including registration, quality assurance, performance monitoring, reporting, risk, audit, review and renewal of providers, and accreditation of VET qualifications.

WA has adopted an approach that differs to that of other jurisdictions. Whilst WA is committed to ensuring effective national regulation of the VET sector and will participate in the national system, it will continue to regulate those providers who operate only in this State (the majority of providers in WA) through the Training Accreditation Council. The State Government will enact legislation that will mirror the Commonwealth arrangements creating a nationally consistent regulatory environment.

WA providers who operate in multiple jurisdictions or accept international students will be subject to regulation by the national regulator. In some circumstances where the provider has been deemed low risk and there is minimal multi jurisdictional delivery, the provider may continue to be regulated by the WA regulator. As the State and Commonwealth arrangements will be identical, minimal disruption is anticipated. The details of these arrangements will be further developed in the second half of 2010, during which time the State Government is committed to keeping the VET sector informed.

The Department is represented on the peak joint Commonwealth and State and Territory Working Groups and responsible for negotiating the establishment of the National VET Regulator.

HIGHER EDUCATION

Consultation

In 2009 the Australian Government announced as part of its reform agenda for the higher education sector that mission-based compacts would be established with universities across Australia. As input to that process, on 18 March 2010, a bilateral discussion was held in Perth between officers from the Commonwealth and Western Australia. The Department of Education Services coordinated input from Western Australia which included officers from the Departments of the Premier and Cabinet; Commerce; Education; Health; Training and Workforce Development; and the Office of the Chief Scientist. The purpose of the bilateral meeting was to discuss the impact of higher education on State planning and development. The discussion revolved around the following themes: State Government priorities; an overview of State development; skill development and workforce planning; strategies for growing the system and widening participation; infrastructure and regional development; and research issues.

State Submissions

On behalf of the Minister for Education and in consultation with the Department of Training and Workforce Development, the Department of Education Services produced a submission to the Australian Government's review or regional loading. In December 2009, the Australian Government released an issues paper entitled *The Review of Regional Loading - Issues for Regional Provision*, inviting input from the higher education sector and other stakeholders on key matters relating to the provision of quality higher education in regional Australia, with particular reference to funding and the role of regional loading. The submission sent by the Minister for Education provided evidence that there is substantial scope to improve the levels of higher education participation in regional and remote areas of WA and suggested elements of a funding model that could replace the current regional loading including one that:

- recognises Western Australia's unique geographical profile and that at least reflects Western Australia's population share of people from regional and remote locations;
- reflects the unique difficulties of fulfilling the aspirations of people for higher education opportunities in a place that is sparsely populated and features immense distances; and
- facilitates increased cooperation between universities and the VET system in regional areas, noting that VET currently appears to be acting as a substitute for higher education in regional Western Australia.

The Department of Education Services also provided input to the State Government's submission to the Senate's *Inquiry into Rural and Regional access to Secondary and Tertiary Education Opportunities*.

Tertiary Education Quality and Standards Agency (TEQSA)

During 2009-10, the Commonwealth Department of Education, Employment and Workplace Relations (DEEWR) held formal consultations with States and Territories on the establishment of TEQSA as a national regulatory agency which would take over the current state and territory roles and responsibilities in higher education regulation.

Initially the Commonwealth had asked States and Territories to refer their powers. All States and Territories, with the exception of Western Australia and Victoria, notionally agreed. Subsequently the Commonwealth indicated that they intended to establish TEQSA under their corporations powers.

Discussions were held with DEEWR regarding the development of an Intergovernmental Agreement on TEQSA which would establish the proposed new Agency's principles, functions and regulatory approach as well as the roles of States and Territories. This document was to be submitted to the Ministerial Council for consideration and endorsement.

Subsequently the Commonwealth has established TEQSA on an interim administrative basis pending decisions of the Australian Government on the legislative basis, structure and funding for TEQSA.

Western Australia has sought advice from the Attorney General on the implications for the State's roles and responsibilities and continues to assert its current position that the State:

- wishes to have a role in the national regulatory system;
- will not be considering any referral of State powers to facilitate the establishment of TEQSA; and
- will seek to maintain its current operational role.

Korea Energy and Mineral Resources Engineering Program (KEMREP)

The Department of Education Services has assisted the office of the Minister for Education in supporting a memorandum of understanding between Curtin University of Technology, the University of Western Australia and KEMREP, a group of ten Korean universities backed by the Korean Government, which is seeking to improve academic expertise in mining and petroleum engineering through partnerships with Western Australian universities. The agreement was proposed at a meeting between the Minister and KEMREP representatives in January 2010.

The agreement will result in long-term institutional collaboration in education and research, including exchanges of information and experience, exchanges of faculty members and students, cooperative research projects and an executive development program.

By the end of the 2009-10 financial year, the agreement was being finalised.

Review of Post-Secondary Agricultural Education in Western Australia

At the end of January 2010, the State Government appointed Hon Hendy Cowan to conduct a review of post-secondary agricultural education in the State. This was in response to questions raised about the future of the Muresk Institute and the broader issue of the education and training needs of agriculture sector. Executive support was provided to Mr Cowan by the Department of Education Services.

The terms of reference of the review were to address the requirements of the agricultural sector for university graduates; to identify areas of agricultural education that are not being fully catered for; to identify the future needs of universities offering agricultural education; to examine agriculture-related pathways between schools and further education; to explore the need for expansion, rationalisation or restructuring of agricultural education programs; and to make proposals for the future use of government assets at the Muresk Institute.

The Cowan Report was presented to the Government in late April 2010. At the end of the current reporting period, the Government was undertaking detailed consideration of the review's recommendations.

INTERNATIONAL EDUCATION

New Program of Support for International Education in Western Australia

The new Program was approved by the Minister for Education and the Minister for Training in June 2009 with an allocation of \$1.5m per year for the 2009-10 and 2010-11 financial years. The key elements of the program undertaken in 2009-10 were:

- A new annual contract with Perth Education City was agreed to support the marketing of the WA brand of international education. The contract took a focused and longer term approach to target markets and areas of highest public benefit.
- An evaluation of contracts with Perth Education City was undertaken involving consultation with local and national stakeholders. This was the first evaluation since the inception of State Government funding in 2005-6. The evaluation was completed in June 2010 and made recommendations for longer term arrangements.
- A study was commissioned on options for the State Government to support the attraction and retention of international higher-degree-by-research students at WA Universities.
- The inaugural meeting of the WA International Student Forum was held on 29 June 2010 and was opened by the Minister for Education. Membership is drawn from three groups: students and student advocates; peak education provider organizations and relevant government agencies. The Forum has a standing agenda to monitor key aspects of the student's experience and will meet twice a year on a fixed calendar.
- Work on the WA International Student Portal was initiated in 2009-10. The Portal will provide information across all issues relevant to students to support informed decision making. It will be the first State Government website dedicated to the information needs of international students.
- Accommodation is the most important issue for international students outside their education. The regulation of accommodation relevant to international students was reviewed and identified scope to improve the information available to students. The Department of Education Services and the Department of Commerce - which oversees the Residential Tenancies Act - agreed to collaborate on this issue.
- Consultations were held with community leaders and other State and Commonwealth Government agencies on the welfare needs of Indian students affected by changes to migration settings in 2010.

- Consultations were initiated with the Department of Training and Workforce Development on a discussion paper on a future skilled migration pathway from on-shore international education in WA.
- The State Government's policy positions on international education were articulated in submissions to the Baird Review of the Commonwealth Education Services for Overseas Students (ESOS) Act and the Senate Inquiry into the Welfare of International Students.
- The inauguration of the *International Training Provider of the Year* award, as part of the Western Australian Training Awards. This award was introduced to recognise excellence in the delivery of training by international providers based in Western Australia.

LEGISLATIVE SERVICES

Advice on Amendments to the *Higher Education Act 2004*

The *Higher Education Amendment Act 2009* was passed by Parliament late in late 2009 and proclaimed on 1 January 2010. The Act amends the *Higher Education Act 2004* in regard to higher education regulatory matters.

The amending legislation was required to discharge Western Australia's national obligations to introduce the revised *National Protocols for Higher Education Approval Processes* (National Protocols) to promote consistency in higher education regulation. The National Protocols are a key element of a national quality assurance framework for Australian higher education designed to ensure consistent criteria and standards for higher education approval process across Australia.

Consequential changes were also made to the *Higher Education Regulations 2005* following the introduction of the amending legislation. The main amendments to the Regulations relate to outlining costs and expenses to be considered in relation to a 'request' under section 7 of the *Higher Education Act 2004* (dealing with investigating the establishment of an Australian university) or 'applications' under section 9 (relating to overseas university applications) and section 13A (applications for self-accrediting, but not university, status).

The costs and expenses referred to are part of the written arrangement or payment agreement which must be developed between the Minister for Education and applicants (under sections 7, 9 and 13A) as outlined in section 28 of the Act.

Advice on Amendments to the *Curriculum Council Act 1997*

Following approval of drafting instructions during the previous reporting period, a bill to amend this Act was largely completed.

In summary, *Curriculum Council Amendment Bill 2010* has provisions to:

- replace the Curriculum Council with a statutory body known as the School Curriculum and Standards Authority, with a composition and functions that highlight its role as a regulatory body with responsibilities for curriculum, standards and assessment;
- have the Authority governed by a Board that minimises the potential for conflicts of interest inherent in the Act's current provisions, which do not separate the regulators of school curriculum, standards and assessment from the providers of schooling;
- identify the main functions of the Authority around a standards function and a curriculum function and establish two statutory advisory committees for these purposes;
- provide the Authority with some of the same functions as the Curriculum Council and some new ones primarily related to the monitoring of standards of student achievement; and
- enable the Authority to prepare reports on the standards being achieved in schools and make recommendations, where appropriate, for improvement.

Review of the *Western Australian College of Teaching Act 2004*

Section 90 of the *Western Australian College of Teaching Act 2004* obliges the responsible Minister to review the Act and table a report of the review in Parliament. Taking account of the provisions of section 90, the Minister for Education commissioned the Department to undertake the review. The review was completed during the reporting period and it is expected that a report will be tabled in the 2010 Spring session of Parliament.

The main elements of the Review were:

- | the publication of a Discussion Paper. This paper, providing information and inviting comments on the terms of reference for the review, was released in February 2009.
- | an examination of the legislation of comparable bodies in Australasia;
- | discussions with interested stakeholder groups and organisations;
- | establishment of a Review website which went live in March 2009;
- | a call for submissions from interested parties; and
- | a survey of a stratified random sample of registered teachers. This survey, conducted between March and May, was undertaken by a consultant on behalf of the Department of Education Services. The survey involved analysis of the responses of a sample of 974 teachers and focused on respondents' views about the operation and effectiveness of WACOT.

Universities' Legislation

The Department is preparing, in consultation with the State's five universities and other relevant agencies, drafting instructions for a bill to amend the Acts of these universities. Some of the amendments relate to issues that are common to the four public universities:

- | the borrowing powers and processes incidental to the exercise of those powers;
- | the participation of universities in commercial activities; and
- | Parliamentary scrutiny of university subsidiary legislation.

Other amendments relate to issues that are of concern only to individual universities.

Instrument of Delegation to Technical and Vocational Education and Training (TVET) Australia

In October 2009, the Department of Education Services negotiated the development of an instrument of delegation from the Training Accreditation Council to TVET Australia. The instrument was prepared by the State Solicitor's Office. Preparation of the instrument followed an earlier decision of the then Ministerial Council for Vocational and Technical Education (MCVTE) where Ministers agreed to a suite of reforms to improve the regulation of the national training system. These reforms included the establishment of a registration and audit function in TVET Australia, operating under delegation from States and Territories with the aim of reducing the audit burden on registered training providers operating across jurisdictions.

ACROSS ALL SECTORS

RESEARCH SERVICES

The Department undertook research as required across the education and training sectors to inform and advise the Government in the following areas.

- | Analysis of statistics on higher education participation and attainment in regional areas of WA.
- | Aggregate demand and supply for university graduates in WA to 2026. This included consideration of:
 - (a) the Commonwealth Government's higher education attainment targets; and
 - (b) projected demand and supply for teachers and nurses prepared by the relevant Government agencies.

NATIONAL STANDARDS AND GUIDELINES

National Framework for Regulation of Education Services Provision to International Students

The Department continued to participate in multi-lateral consultations with the Commonwealth/State and Territory regulatory authorities and major stakeholders to develop the new framework and standards for the regulation of education services offered to international students. WA is also represented on the Joint Committee on International Education (JCIE) and the International Quality Implementation Group (IQIG).

Australian Quality Training Framework (AQTF)

The Department, through the Training Accreditation Council, continues to work collaboratively with the Australian Government and all State and Territory governments in the regulation of the vocational education and training sector under the AQTF. The AQTF is the national set of standards which assures nationally consistent, high quality training and assessment services for the clients of vocational education and training.

Since the implementation of the revised AQTF standards in July 2007, the Department has been an active member of the National Consistency Action Group and its predecessor the National Registration and Accreditation Technical Committee. More recently, the Department provided State representation on the joint National Senior Officials Committee/National Quality Council Joint Working Group which provided advice on changes to the AQTF, due for implementation on 1 July 2010.

WESTERN AUSTRALIAN ABORIGINAL EDUCATION AND TRAINING COUNCIL

The Western Australian Aboriginal Education and Training Council's (WAAETC) primary source of advice to Government on emerging issues in Aboriginal education and training is the 'grassroots' participation of ten Aboriginal community members representing nine regional areas across Western Australia. In addition a core reference group providing expertise on education and training matters forms the ex officio membership that comprises the heads of each of the education and training provider system or sector. The Council met on five occasions in the reporting period.

A significant role played by the WAAETC is the development and monitoring of the quadrennial Strategic Plan for Aboriginal Education and Training in Western Australia. A monitoring report is produced annually.

Aboriginal Education and Training Initiatives:

Initiatives for the reporting period have centred on preparing a Parents and Community Engagement (PaCE) funding submission to the Department of Education, Employment and Workplace Relations to continue building capacity of parents and community members so that they can confidently engage in schooling and educational partnerships.

Key Achievements:

- Submission to the Western Australian Better Attendance: Brighter Futures Strategy
- Submissions to ensure Aboriginal perspectives were provided in the development of National policy and directions including:
 1. The National Aboriginal and Torres Strait Islander Education Action Plan 2010 – 2014
 2. The New National Curriculum in English, Mathematics, Science and History
 3. The Inquiry into Planning Options and Services for people Ageing with a Disability

The WAAETC in partnership with Edith Cowan University conducted a number of workshops on Effective Test Literacy Strategies for Aboriginal students following the publication of a study on the National Assessment Program: Literacy and Numeracy (NAPLAN).

RURAL AND REMOTE EDUCATION ADVISORY COUNCIL

The Rural and Remote Education Advisory Council (RREAC), initially established in 1997, was re-constituted by the Minister for Education in early 2010 with a new Chairperson and a new Deputy Chairperson (see Appendix 11). The RREAC membership will comprise representatives from various consumer and community groups with a strong interest in rural and remote education in Western Australia. Members use their experience, skills, attributes or qualifications to perform their advisory function. The funders and providers of educational services in Western Australia are ex-officio members of RREAC.

The Terms of Reference approved by the Minister for Education are broadly to provide the Minister with evidence-based and solutions-focused, strategic advice on education and training issues and developments in rural and remote areas of the State. In addition, the Minister has referred the following specific directions to the Council:

- Provide advice on how the Government should be addressing the emerging need to have more qualified staff available for rural and remote education settings, such as child care and early education, in order for the State to meet COAG's new national requirements and standards.
- Provide advice about the future uses of technology in the delivery of education in rural and remote education settings.
- Provide advice about access to and provision of higher education in rural and remote settings, following the *Review of Regional Loading*.

The first meeting of the re-constituted RREAC was not held until after the current reporting period.



4. WORKFORCE AND ORGANISATIONAL CAPABILITY

Key Objective: To ensure an innovative and effective organisation through responsive leadership and governance with a focus on developing and valuing staff.

Government Goal:

Outcomes-Based Service Delivery

Greater focus on achieving results in key service delivery areas for the benefit of all Western Australians.

Key Achievements 2009-10:

- | The STARS information system was extended to support the regulation of schools, higher education and international education and the calculation and payment of per capita grants to non-government schools.
- | An Information Plan was prepared to guide the development of business systems within the Department.
- | The development of a four year Strategic Audit Plan was initiated.
- | Staff undertook the Accountable and Ethical Decision Making in the Western Australian Public Sector training program developed by the Public Sector Commission.
- | Prepared a draft 'People Development Project Plan' to address concerns raised by staff in a Health and Wellbeing Survey.

INFORMATION TECHNOLOGY MANAGEMENT

The STARS system - which provides best practice and support for the regulation of vocational education and training - was extended to support the regulation of schools, higher education and international education. It was also extended to support calculation and payment of per capita grants to non-government schools.

An Information Plan was prepared to guide the development of business systems within the Department. The Plan recommended four strategies for the next three to five years. These included an electronic service delivery strategy and central management of stakeholder interactions. The Report also identified the recruitment of an Information Manager as a key priority.

The Department is continuing with its Low Interest Loans Scheme (LILS) System Assessment Project. A consultant has provided a number of recommendations and the Department is preparing to conduct a compatibility evaluation of its preferred option.

INTERNAL AUDIT

The 2009-10 annual internal audit program was conducted; informed by the Department's Risk Register. The key management controls were found to be adequate and operating effectively and procedures were in compliance with the related policies and Treasurer's Instructions.

The development of a Strategic Audit Plan was initiated. The Plan is based on a map of all core business and corporate functions developed following consultation with function managers. The Plan provides for all median and higher risk functions to be reviewed within a four year term. A functional review policy was approved for the external review of key functions.

ACCOUNTABLE AND ETHICAL DECISION MAKING (AEDM)

During the 2009-10 reporting period, some 95 percent of full-time and part-time staff participated in customised Accountable and Ethical Decision Making training sessions. The sessions, conducted with the assistance of a consultant using the materials developed by the Public Sector Commission, were well received and stimulated discussion. The training sessions focussed on six modules that mirror the six categories of conduct in the Conduct Guide produced by the Office of the Public Sector Standards Commissioner and the Department's Code of Conduct. These were: Personal Behaviour; Communication and Official Information; Fraudulent and Corrupt Behaviour; Use of Public Resources; Record Keeping and Use of Information; and Conflict of Interest.

HUMAN RESOURCE MANAGEMENT

An employee Health and Wellbeing Survey was undertaken in June 2009 and the results, although generally very positive, indicated that a stronger focus was needed on work-life balance and career development. The People Development committee have recommended a range of workforce initiatives to address areas of career development, succession planning, mentoring and staff health and wellbeing.

The Department recognises the importance of its officers in the overall achievement of its goals and objectives. An Employee Assistance Program is available to help staff identify, explore and resolve everyday work or personal problems; an inevitable part of life.

RISK MANAGEMENT

The Department's risk management process looks at the potential for corrupt practices and other factors that impinge on its strategic planning, operational efficiency and effectiveness. The Department has a comprehensive risk register that is monitored and updated regularly. All employees are encouraged to incorporate the management of risk into their planning and work related activities. The register comprises risks identified at the Departmental strategic level, operational level and project level. The register is readily available to all staff on the intranet. At 30 June 2010 all identified risks had effective risk treatments in place.



SIGNIFICANT ISSUES AND TRENDS

- I A school effectiveness review process for Independent Public Schools is to be developed and implemented to achieve the degree of provider-regulator separation required for objective assessment of this key Government initiative. The Department has substantial experience with independent regulating/auditing of a variety of education and training providers, including non-government schools, and has been allocated funds to expand its role to Independent Public Schools.
- I A significant increase in demand for the Department's legislative and policy services caused by national agreements relating to the regulation of services in vocational education and training, early childhood education and care and international education, and growing uniformity in the regulation of higher education.
- I The Department continues to strengthen the accountability of non-government schools for the financial assistance received from the State Government. In 2009 the following initiatives were undertaken:
 - a funding order was published in the Government Gazette expressing the purposes for which funds will be applied and details of the amount and timing of payment of per capita grants;
 - guidelines expressing the principles for funding were prepared and approved;
 - funding agreements for 2010-2012 between each non-government school or system and the Minister for Education were signed; and
 - an annual grants auditing program was introduced - 85 schools have been, or are planned to be audited in 2009-10.
- I The Department has developed and will implement in 2010-11 a clearer registration standard on governance and introduce a financial risk assessment process for 65 non-government schools, increasing these schools' standards of governance and financial management.
- I The Government has recognised the need to enhance the public value from the international education sector. Steps taken by the Department to achieve this include:
 - signing a new marketing agreement with Perth Education City prioritising key countries and high value courses;
 - enhancing the information available to international students about living and studying in Western Australia; and
 - better management of the risks of college closures.
- I The Council of Australian Governments (COAG) Productivity Agenda for Vocational Education and Training Reform will directly impact the State's arrangements for regulation in this area. In addition the introduction of a strengthened Australian Quality Training Framework, including more stringent registration requirements for new and continuing providers, will involve an extensive implementation and transition strategy.

DISCLOSURES AND LEGAL COMPLIANCE

Financial Statements

CERTIFICATION OF FINANCIAL STATEMENTS

For the year ended 30 June 2010

The accompanying financial statements of the Department of Education Services have been prepared in compliance with the provisions of the *Financial Management Act 2006* from proper accounts and records to present fairly the financial transactions for the financial year ended 30 June 2010 and the financial position as at 30 June 2010.

At the date of the signing we are not aware of any circumstances which would render any particulars included in the financial statements to be misleading or inaccurate.



Raymond Willis
CHIEF FINANCE OFFICER

Date: 15 September 2010



Richard Strickland
ACCOUNTABLE AUTHORITY

Date: 15 September 2010

Auditor General's Opinion



Auditor General

INDEPENDENT AUDIT OPINION

To the Parliament of Western Australia

DEPARTMENT OF EDUCATION SERVICES FINANCIAL STATEMENTS AND KEY PERFORMANCE INDICATORS FOR THE YEAR ENDED 30 JUNE 2010

I have audited the accounts, financial statements, controls and key performance indicators of the Department of Education Services.

The financial statements comprise the Statement of Financial Position as at 30 June 2010, and the Statement of Comprehensive Income, Statement of Changes in Equity, Statement of Cash Flows, Schedule of Income and Expenses by Service, Schedule of Assets and Liabilities by Service, and Summary of Consolidated Account Appropriations and Income Estimates for the year then ended, a summary of significant accounting policies and other explanatory Notes, including Administered transactions and balances.

The key performance indicators consist of key indicators of effectiveness and efficiency.

Chief Executive Officer's Responsibility for the Financial Statements and Key Performance Indicators

The Chief Executive Officer is responsible for keeping proper accounts, and the preparation and fair presentation of the financial statements in accordance with Australian Accounting Standards and the Treasurer's Instructions, and the key performance indicators. This responsibility includes establishing and maintaining internal controls relevant to the preparation and fair presentation of the financial statements and key performance indicators that are free from material misstatement, whether due to fraud or error; selecting and applying appropriate accounting policies; making accounting estimates that are reasonable in the circumstances; and complying with the Financial Management Act 2006 and other relevant written law.

Summary of my Role

As required by the Auditor General Act 2006, my responsibility is to express an opinion on the financial statements, controls and key performance indicators based on my audit. This was done by testing selected samples of the audit evidence. I believe that the audit evidence I have obtained is sufficient and appropriate to provide a basis for my audit opinion. Further information on my audit approach is provided in my audit practice statement. This document is available on the OAG website under "How We Audit".

An audit does not guarantee that every amount and disclosure in the financial statements and key performance indicators is error free. The term "reasonable assurance" recognises that an audit does not examine all evidence and every transaction. However, my audit procedures should identify errors or omissions significant enough to adversely affect the decisions of users of the financial statements and key performance indicators.

Department of Education Services

Financial Statements and Key Performance Indicators for the year ended 30 June 2010

Audit Opinion

In my opinion,

- (i) the financial statements are based on proper accounts and present fairly the financial position of the Department of Education Services at 30 June 2010 and its financial performance and cash flows for the year ended on that date. They are in accordance with Australian Accounting Standards and the Treasurer's Instructions;
- (ii) the controls exercised by the Department provide reasonable assurance that the receipt, expenditure and investment of money, the acquisition and disposal of property, and the incurring of liabilities have been in accordance with legislative provisions; and
- (iii) the key performance indicators of the Department are relevant and appropriate to help users assess the Department's performance and fairly represent the indicated performance for the year ended 30 June 2010.



COLIN MURPHY
AUDITOR GENERAL
20 September 2010

Department of Education Services
Statement of Comprehensive Income
For the year ended 30 June 2010

	Notes	2010 \$000	2009 \$000
COST OF SERVICES			
Expenses			
Employee benefits expense	7	6,003	4,730
Supplies and services	8	4,557	3,067
Depreciation	9	52	35
Finance costs	10	17,691	24,782
Accommodation expenses	11	390	421
Grants and subsidies	12	67	126
Other expenses	13	163	124
Total cost of services		28,923	33,285
Income			
User charges and fees	14	868	1,068
Interest revenue	15	13,950	13,072
Commonwealth grants and contributions	16	974	433
Other revenue	17	234	109
Total Revenue		16,026	14,682
Total income other than income from State Government		16,026	14,682
NET COST OF SERVICES		(12,897)	(18,603)
Income from State Government			
Service appropriation	18	14,936	15,826
Resources received free of charge	18	255	134
Total income from State Government		15,191	15,960
SURPLUS/(DEFICIT) FOR THE PERIOD		2,294	(2,643)
OTHER COMPREHENSIVE INCOME			
Changes in asset revaluation surplus	28	-	(200)
Total other comprehensive income		-	(200)
TOTAL COMPREHENSIVE INCOME FOR THE PERIOD		2,294	(2,843)

The Statement of Comprehensive Income should be read in conjunction with the accompanying notes.

Department of Education Services
Statement of Financial Position

As at 30 June 2010

	Notes	2010 \$000	2009 \$000
ASSETS			
Current Assets			
Cash and cash equivalents	29	8,224	7,670
Restricted cash and cash equivalents	19/29	214	124
Receivables	20	922	1,001
Amounts receivable for services	21	35	176
Loan to schools	22	26,488	23,141
Total Current Assets		35,883	32,112
Non-Current Assets			
Receivables – Loan to Schools	22	152,916	150,888
Amounts receivable for services	21	141	94
Property, plant and equipment	23/24	1,423	1,460
Total Non-Current Assets		154,480	152,442
TOTAL ASSETS		190,363	184,554
LIABILITIES			
Current Liabilities			
Payables	25	3,411	3,293
Borrowings	26	26,488	23,311
Provisions	27	1,049	675
Total Current Liabilities		30,948	27,279
Non-Current Liabilities			
Borrowings	26	201,719	201,943
Provisions	27	377	307
Total Non-Current Liabilities		202,096	202,250
TOTAL LIABILITIES		233,044	229,529
NET LIABILITIES^(a)		(42,681)	(44,975)
EQUITY			
Contributed equity	28	18	18
Reserves	28	870	870
Accumulated deficit	28	(43,569)	(45,863)
TOTAL EQUITY		(42,681)	(44,975)

(a) Notwithstanding the Department's deficiency of net assets, the financial statements have been prepared on the going concern basis. This basis has been adopted as the Department is a State Government agency which is funded by Parliamentary appropriation from the Consolidated Account.

The Statement of Financial Position should be read in conjunction with the accompanying notes.

Department of Education Services

Statement of Changes in Equity

For the year ended 30 June 2010

	Note	Contributed equity \$000	Reserves \$000	Accumulated surplus/ (deficit \$000	Total Equity \$000
Balance at 1 July 2008	28	18	1,070	(43,220)	(43,132)
Total comprehensive income for the year			(200)	(2,643)	(2,843)
Balance at 30 June 2009		18	870	(45,863)	(44,975)
Total comprehensive income for the year				2,294	2,294
Balance at 30 June 2010		18	870	(43,569)	(42,681)

The Statement of Changes in Equity should be read in conjunction with the accompanying notes.

Department of Education Services

Statement of Cash Flows

For the year ended 30 June 2010

	Notes	2010 \$000	2009 \$000
CASH FLOWS FROM STATE GOVERNMENT			
Service appropriation		14,854	15,696
Holding account draw downs		176	220
Net cash provided by State Government		15,030	15,916
Utilised as follows:			
CASH FLOWS FROM OPERATING ACTIVITIES			
Payments			
Employee benefits		(5,569)	(4,965)
Supplies and services		(4,040)	(2,695)
Finance costs		(11,563)	(15,303)
Accommodation		(390)	(407)
Grants and subsidies		(67)	(126)
GST payments on purchases		(473)	(370)
GST payments to taxation authority		(92)	(125)
Loans advanced to schools		(26,500)	(29,500)
Other payments		(288)	(325)
Receipts			
Repayments of loans by schools		23,548	21,991
User charges and fees		614	1,200
Commonwealth grants and contributions		897	510
Interest received		5,822	5,314
GST receipts on sales		139	133
GST receipts from taxation authority		403	550
Other receipts		236	107
Net cash provided by/(used in) operating activities	29	(17,323)	(24,011)
CASH FLOWS FROM INVESTING ACTIVITIES			
Purchase of non-current physical assets		(15)	(126)
Net cash used in investing activities		(15)	(126)
CASH FLOWS FROM FINANCING ACTIVITIES			
Proceeds from borrowings		26,500	32,743
Repayment of borrowings		(23,548)	(21,991)
Net cash provided by/(used in) financing activities		2,952	10,752
Net increase in cash and cash equivalents		644	2,531
Cash and cash equivalents at the beginning of period		7,794	5,263
CASH AND CASH EQUIVALENTS AT THE END OF PERIOD	29	8,438	7,794

The Statement of Cash Flows should be read in conjunction with the accompanying notes.

Department of Education Services

Summary of Consolidated Account Appropriations and Income Estimates

For the year ended 30 June 2010

	2010 Estimate \$000	2010 Actual \$000	Variance \$000	2010 Actual \$000	2009 Actual \$000	Variance \$000
<u>Delivery Services</u>						
Item 58 Net amount appropriated to deliver services	19,687	14,725	(4,962)	14,725	15,627	(902)
Amount Authorised by Other Statutes	211	211	-	211	199	12
- Salaries and Allowances Act 1975						
Total appropriations provided to deliver services	19,898	14,936	(4,962)	14,936	15,826	(890)
<u>Administered Transactions</u>						
Item 59 Administered grants, subsidies and other transfer payments	312,486	307,886	(4,600)	307,886	276,075	31,811
Total Administered Transactions	312,486	307,886	(4,600)	307,886	276,075	31,811
GRAND TOTAL	332,384	322,822	(9,562)	322,822	291,901	30,921
<u>Details of Expenses by Service</u>						
Planning, Regulatory & Funding Services	36,907	28,923	(7,984)	28,923	33,285	(4,362)
Total Cost of Services	36,907	28,923	(7,984)	28,923	33,285	(4,362)
Less Total Income from Ordinary Activities	(16,677)	(16,026)	651	(16,026)	(14,682)	(1,344)
Net Cost of Services	20,230	12,897	(7,333)	12,897	18,603	(5,706)
Adjustments ^(a)	(332)	2,039	2,371	2,039	(2,777)	4,816
Total appropriations provided to deliver services	19,898	14,936	(4,962)	14,936	15,826	(890)
<u>Capital Expenditure</u>						
Purchase of non-current physical assets	176	15	161	15	126	(111)
Adjustments for movement for Cash Balances and other Funding Sources	-	161	(161)	161	94	67
Holding Account Draw-downs	(176)	(176)	-	(176)	(220)	44
Capital appropriations	-	-	-	-	-	-
<u>Details of Income Estimates</u>						
Income disclosed as Administered Income	312,701	308,101	(4,600)	308,101	276,452	31,649

(a) Adjustments comprise movements in cash balances and other accrual items such as receivables, payables and superannuation.

Note 34 Explanatory statement provides details of any significant variations between estimates and actual results for 2009 and between the actual results for 2009 and 2010.

Notes to the Financial Statements

For the year ended 30 June 2010

Note 1. Australian Accounting Standards

General

The Department's financial statements for the year ended 30 June 2010 have been prepared in accordance with Australian Accounting Standards. The term 'Australian Accounting Standards' refers to Standards and Interpretations issued by the Australian Accounting Standard Board (AASB).

The Department has adopted any applicable, new and revised Australian Accounting Standards from their operative dates.

Early adoption of standards

The Department cannot early adopt an Australian Accounting Standard unless specifically permitted by TI 1101 Application of Australian Accounting Standards and Other Pronouncements. No Australian Accounting Standards that have been issued or amended but not operative have been early adopted by the Department for the annual reporting period ended 30 June 2010.

Note 2. Australian Equivalents to International Financial Reporting Standards General

The Department's financial statements for the year ended 30 June 2010 have been prepared in accordance with Australian equivalents to International Financial Reporting Standards (AIFRS) which comprise a Framework for the Preparation and Presentation of Financial Statements (the Framework) and Australian Accounting Standards (including the Australian Accounting Interpretations). In preparing these financial statements the Department has adopted, where relevant to its operations, new and revised Standards and Interpretations from their operative dates as issued by the AASB and formerly the Urgent Issues Group (UIG).

Note 3. Summary of significant accounting policies

(a) General statement

The financial statements constitute general purpose financial statements that have been prepared in accordance with Australian Accounting Standards, the Framework, Statements of Accounting Concepts and other authoritative pronouncements of the Australian Accounting Standards Board as applied by the Treasurer's instructions. Several of these are modified by the Treasurer's instructions to vary application, disclosure, format and wording.

The Financial Management Act and the Treasurer's instructions are legislative provisions governing the preparation of financial statements and take precedence over Australian Accounting Standards, the Framework, Statements of Accounting Concepts and other authoritative pronouncements of the Australian Accounting Standards Board.

Where modification is required and has had a material or significant financial effect upon the reported results, details of that modification and the resulting financial effect are disclosed in the notes to the financial statements.

(b) Basis of preparation

The financial statements have been prepared on the accrual basis of accounting using the historical cost convention, modified by the revaluation of land, buildings and infrastructure which have been measured at fair value.

The accounting policies adopted in the preparation of the financial statements have been consistently applied throughout all periods presented unless otherwise stated.

The financial statements are presented in Australian dollars and all values are rounded to the nearest thousand dollars (\$'000).

The judgements that have been made in the process of applying the Department's accounting policies that have the most significant effect on the amounts recognised in the financial statements are disclosed at note 4 'Judgements made by management in applying accounting policies'.

(c) Reporting entity

The reporting entity comprises the Department and which has no related bodies.

Mission

The Department's mission is to proactively support the development of Western Australia's education and training systems for the benefit of students and the State through provision of relevant regulation, funding and policy advisory services.

Services

The Department is mainly funded by parliamentary appropriation supplemented by fees received for the registration of education and training providers that are charged according to the provision contained in relevant legislation.

The Department administers assets, liabilities, income and expenses on behalf of Government which are not controlled by, nor integral to the function of the Department. These administered balances and transactions are not recognised in the principal financial statements of the Department but schedules are prepared using the same basis as the financial statements and are presented at note 34, Explanatory statement, note 39 'Administered expenses and income' and note 40 'Administered assets and liabilities'.

(d) Contributed equity

AASB Interpretation 1038 'Contributions by Owners Made to Wholly-Owned Public Sector Entities' requires transfers, other than as a result of a restructure of administrative arrangements, in the nature of equity contributions to be designated by the Government (the owner) as contributions by owners (at the time of, or prior to transfer) before such transfers can be recognised as equity contributions. Capital contributions (appropriations) have been designated as contributions by owners by Treasurer's instruction (TI) 955 'Contributions by Owners made to Wholly-Owned Public Sector Entities' and have been credited directly to Contributed Equity.

Transfer of net assets to/from other agencies, other than as a result of a restructure of administrative arrangements, are designated as contributions by owners where the transfers are non-discretionary and non-reciprocal. See note 28 'Equity'.

(e) Income

Revenue recognition

Revenue is measured at the fair value of consideration received or receivable. Revenue is recognised for the major business activities as follows:

Rendering of services

Revenue is recognised upon delivery of service to the client. Annual Registration fees are recognised as income on issue of the invoice to the Registered Training Organisation.

Interest

The effective interest rate method, which is the rate that exactly discounts estimated future cash receipts through the expected life of the financial asset to the net carrying amount of the financial asset, is used where applicable.

Service Appropriations

Service Appropriations are recognised as revenues in the period in which the Department gains control of the appropriated funds. The Department gains control of appropriated funds at the time those funds are deposited into the Department's bank account or credited to the holding account held at Treasury. See note 18 'Income from State Government' for further detail.

Net Appropriation Determination

The Treasurer may make a determination providing for prescribed receipts to be retained for services under the control of the Department. In accordance with the determination specified in the 2009-10 Budget Statements, the Department retained \$ 2.3 million in 2009-2010 (\$2.5 million in 2008-2009) from the following:

- registration fees;
- Commonwealth Specific Purpose Program – Aboriginal Education and Training Council;
- miscellaneous revenue;
- GST input credits; and
- GST receipts.

Section 23 of the Financial Management Act 2006, relates to net appropriations. The School Education Act 1999 and the University of Notre Dame Australia Act 1989 allows for funds received for the borrowing of moneys, the on-lending of moneys to schools and the repayments to be retained by the Department thereby not requiring a Treasurer's determination to retain these funds.

Grants, donations, gifts and other non-reciprocal contributions

Revenue is recognised at fair value when the Department obtains control over the assets comprising the contributions which is usually when cash is received. Other non-reciprocal contributions that are not contributions by owners are recognised at their fair value. Contributions of services are only recognised when a fair value can be reliably determined and the services would be purchased if not donated.

Gains

Gains may be realised or unrealised and are usually recognised on a net basis. These include gains arising on the disposal of non-current assets and some revaluations of non-current assets.

(f) Property, plant and equipment and infrastructure

Capitalisation/expensing of assets

Items of property, plant and equipment costing \$5,000 or more are recognised as assets and the cost of utilising assets is expensed (depreciated) over their useful lives. Items of property, plant and equipment costing less than \$5,000 are immediately expensed directly to the Income Statement (other than where they form part of a group of similar items which are significant in total).

Initial recognition and measurement

All items of property, plant and equipment are initially recognised at cost.

For items of property, plant and equipment acquired at no cost or for nominal consideration, the cost is their fair value at the date of acquisition.

Subsequent measurement

After recognition as an asset, the Department uses the revaluation model for the measurement of land and the cost model for all other property, plant and equipment. Land is carried at fair value less accumulated impairment losses.

All other items of property, plant and equipment are carried at historical cost less accumulated depreciation and accumulated impairment losses. Where market-based evidence is available, the fair value of land is determined on the basis of current market buying values determined by reference to recent market transactions.

Where market-based evidence is not available, the fair value of land is determined on the basis of existing use. This normally applies where land use is restricted. Fair value for existing use assets is determined by reference to the cost of replacing the remaining future economic benefits embodied in the asset, i.e. the depreciated replacement cost.

Independent valuations of land are provided annually by the Western Australian Land Information Authority (Valuation Services) and recognised with sufficient regularity to ensure that the carrying amount does not differ materially from the asset's fair value at the balance sheet date.

The most significant assumptions in estimating fair value are made in assessing whether to apply the existing use basis to assets and in determining estimated useful life. Professional judgment by the valuer is required where the evidence does not provide a clear distinction between market type assets and existing use assets.

Refer to note 23 Property, plant and equipment" for further information on revaluations.

Derecognition

Upon disposal or derecognition of an item of property, plant and equipment, any revaluation reserve relating to that asset is retained in the asset revaluation reserve.

Asset revaluation surplus

The asset revaluation reserve is used to record increments and decrements on the revaluation of non-current assets as described in note 23 Property, plant and equipment".

Depreciation

All non-current assets having a limited useful life are systematically depreciated over their estimated useful lives in a manner that reflects the consumption of their future economic benefits.

Land is not depreciated. Depreciation on other assets is calculated using the straight-line method, using rates which are reviewed annually. Estimated useful lives for each class of depreciable asset are:

Computer equipment	3 years
Office equipment	5 years
Furniture	15 years
Software ^(a)	1 year

(a) Software that is integral to the operation of related hardware

(g) Impairment of assets

Property, plant and equipment, and intangible assets are tested for any indication of impairment at each balance sheet date. Where there is an indication of impairment, the recoverable amount is estimated. Where the recoverable amount is less than the carrying amount, the asset is considered impaired and is written down to the recoverable amount and an impairment loss is recognised. As the Department is a not-for-profit entity, unless an asset has been identified as a Surplus asset, the recoverable amount is the higher of an asset's fair value less costs to sell and depreciated replacement cost.

The risk of impairment is generally limited to circumstances where an asset's depreciation is materially understated or where the replacement cost is falling or where there is a significant change in useful life. Each relevant class of assets is reviewed annually to verify that the accumulated depreciation/amortisation reflects the level of consumption or expiration of asset's future economic benefits and to evaluate any impairment risk from falling replacement costs.

Intangible assets with an indefinite useful life and intangible assets not yet available for use are tested for impairment at each balance sheet date irrespective of whether there is any indication of impairment. The recoverable amount of assets identified as surplus assets is the higher of fair value less costs to sell and the present value of future cash flows expected to be derived from the asset. Surplus assets carried at fair value have no risk of material impairment where fair value is determined by reference to market-based evidence. Where fair value is determined by reference to depreciated replacement cost, surplus assets are at risk of impairment and the recoverable amount is measured. Surplus assets at cost are tested for indications of impairment at each balance sheet date.

(h) Leases

The Department has entered into a number of operating lease arrangements for the office building, vehicles and office furniture. Lease payments are expensed on a straight line basis over the lease term as this represents the pattern of benefits derived from the leased properties.

(i) Financial instruments

In addition to cash, the Department has two categories of financial instrument:

- Loans and receivables and
- Financial liabilities, measured at amortised cost.

These have been disaggregated into the following classes:

Financial Assets

- Cash and cash equivalents
- Restricted cash and cash equivalents
- Receivables
- Amounts receivable for services
- Loans to schools

Financial Liabilities

- Payables
- Borrowings

Initial recognition and measurement of financial instruments is at fair value which normally equates to the transaction cost or the face value. Subsequent measurement is at amortised cost using the effective interest method.

The receivables (loans to schools) are at fair value less transition costs initially. Subsequently these loans are at amortised cost using the effective interest method as required by AASB139 Financial Instruments "Recognition Measurement."

The fair value of short-term receivables and payables is the transaction cost or face value because there is no interest rate applicable and subsequent measurement is not required as the effect of discounting is not material.

(j) Cash and cash equivalents

For the purpose of the Cash Flow Statement, cash and cash equivalents includes restricted cash and cash equivalents. These are comprised of cash on hand and short-term deposits with original maturities of three months or less that are readily convertible to a known amount of cash and which are subject to insignificant risk of changes in value.

(k) Accrued salaries

The accrued salaries suspense account (see note 19 'Restricted cash and cash equivalents') consists of amounts paid annually into a suspense account over a period of 10 financial years to largely meet the additional cash outflow in each eleventh year when 27 pay days occur instead of the normal 26. No Interest is received on this account.

Accrued salaries (refer note 25 'Payables') represent the amount due to staff but unpaid at the end of the financial year, as the pay date for the last pay period for the financial year does not coincide with the end of the financial year. Accrued salaries are settled within a fortnight of the financial year end. The Department considers the carrying amount of accrued salaries to be equivalent to its net fair value.

(l) Amounts receivable for services (holding account)

The Department receives appropriation funding on an accrual basis that recognises the full annual cash and non-cash cost of services. The appropriations are paid partly in cash and partly as an asset (Holding Account receivable) that is accessible on the emergence of the cash funding requirement to cover items such as leave entitlements and asset replacement.

See also note 18 'Income from State Government' and note 21 'Amounts receivable for services'.

(m) Receivables

Receivables are recognised and carried at original invoice amount less an allowance for uncollectible amounts (i.e. impairment). The collect ability of receivables is reviewed on an ongoing basis and any receivables identified as uncollectible are written-off against the allowance account. The allowance for uncollectible amounts (doubtful debts) is raised when there is objective evidence that the Department will not be able to collect the debts. The carrying amount is equivalent to fair value as it is due for settlement within 30 days. See note 3(i) 'Financial Instruments' and note 20 'Receivables'.

(n) Payables

Payables are recognised when the Department becomes obliged to make future payments as a result of a purchase of assets or services. The carrying amount is equivalent to fair value, as they are generally settled within 30 days. See note 3(i) 'Financial instruments' and note 25 'Payables'.

(o) Provisions

Provisions are liabilities of uncertain timing and amount and are recognised where there is a present legal, equitable or constructive obligation as a result of a past event and when the outflow of resources embodying economic benefits is probable and a reliable estimate can be made of the amount of the obligation. Provisions are reviewed at each balance sheet date. See note 27 'Provisions'.

Provisions - employee benefits

Annual leave and long service leave

The liability for annual and long service leave expected to be settled within 12 months after the balance sheet date is recognised and measured at the undiscounted amounts expected to be paid when the liabilities are settled. Annual and long service leave expected to be settled more than 12 months after the balance sheet date is measured at the present value of amounts expected to be paid when the liabilities are settled. Leave liabilities are in respect of services provided by employees up to the balance sheet date.

When assessing expected future payments consideration is given to expect future wage and salary levels including non-salary components such as employer superannuation contributions. In addition, the long service leave liability also considers the experience of employee departures and periods of service. The expected future payments are discounted using market yields at the balance sheet date on national government bonds with terms to maturity that match, as closely as possible, the estimated future cash outflows. An actuarial assessment of long service leave undertaken by Barton's Actuaries at 30 June 2010 determined the liability.

All annual leave and unconditional long service leave provisions are classified as current liabilities as the Department does not have an unconditional right to defer settlement of the liability for at least 12 months after balance sheet date.

Employees commencing employment prior to 16 April 2007 who were not members of either the Pension or the GSS Schemes became non-contributory members of the West State Superannuation Scheme (WSS). Employees commencing employment on or after 16 April 2007 became members of the GESB Super Scheme (GESBS). Both of these schemes are accumulation schemes. The Department makes concurrent contributions to GESB on behalf of employees in compliance with the Commonwealth Government's Superannuation Guarantee (Administration) Act 1992. These contributions extinguish the liability for superannuation charges in respect of the WSS and GESBS Schemes.

The GESB makes all benefit payments in respect of the Pension and GSS Schemes, and is recouped from the Treasurer for the employer's share.

Provisions – other

Employment on-costs

Employment on-cost, including workers compensation insurance, are not employee benefits and are recognised separately as liabilities and expenses when the employment to which they relate has occurred. Employment on-costs are included as part of 'Other expenses' and are not included as part of the Department's 'Employee benefits expense'. The related liability is included in 'Employment on-costs provision'. (See note 13 'Other Expenses' and note 27 'Provisions').

(p) Superannuation expense

The following elements are included in calculating the superannuation expense in the Income Statement:

(i) Defined benefit plans – For 2009-10, the change in the unfunded employer's liability (i.e. current service cost and, actuarial gains and losses) assumed by the Treasurer in respect of current employees who are members of the Pension Scheme and current employees who accrued a benefit on transfer from that Scheme to the Gold State Superannuation Scheme (GSS); and

(ii) Defined contribution plans - Employer contributions paid to the GSS (concurrent contributions), the West State Superannuation Scheme (WSS), and the GESB Super Scheme (GESBS).

Defined benefit plans - For 2009-10, the movements (i.e. current service cost and, actuarial gains and losses) in the liabilities in respect of the Pension Scheme and the GSS Scheme transfer benefits are recognized as expenses directly in the Income Statement. As these liabilities are assumed by the Treasurer (refer note 3(o)), a revenue titled 'Liabilities assumed by the Treasurer' equivalent to the expense is recognised under Income from State Government in the Income Statement. See note 18 'Income from State Government'. Commencing in 2009-10, the reporting of annual movements in these notional liabilities has been discontinued and is no longer recognised in the Income Statement.

The superannuation expense does not include payment of pensions to retirees, as this does not constitute part of the cost of services provided in the current year. Defined contribution plans - in order to reflect the Department's true cost of services, the Department is funded for the equivalent of employer contributions in respect of the GSS Scheme (excluding transfer benefits). These contributions were paid to the GESB during the year and placed in a trust account administered by the GESB on behalf of the Treasurer. The GESB subsequently paid these employer contributions in respect of the GSS Scheme to the Consolidated Account. The GSS Scheme is a defined benefit scheme for the purposes of employees and whole-of-government reporting. However, apart from the transfer benefit, it is a defined contribution plan for agency purposes because the concurrent contributions (defined contributions) made by the agency to GESB extinguishes the agency's obligation to the related superannuation liability.

(q) Resources received free of charge or for nominal cost

Resources received free of charge or for nominal cost that can be reliably measured are recognised as income and as assets or expenses as appropriate, at fair value.

(r) Comparative figures

Comparative figures are, where appropriate, reclassified to be comparable with the figures presented in the current financial year.

(s) Schedule of Income and Expense by Service

This schedule is not applicable for the Department as there is only one service.

(t) Schedule of Assets and Liabilities by Service

This schedule is not applicable for the Department as there is only one service.

Note 4. Judgements made by management in applying accounting policies

The preparation of financial statements requires management to make judgements about the application of accounting policies that have a significant effect on the amounts recognised in the financial statements. The Department evaluates these judgements regularly.

The judgements that have been made in the process of applying accounting policies that have the most significant effect on the amounts recognised in the financial statements include:

Adoption of fair value versus cost basis for Loans receivable. Loans to schools are measured at fair value using the current AASB 139 'Financial Instruments: Recognition and Measurement' requirements. The Department's adoption of fair value versus cost basis was made in consultation with the Department of Treasury and Finance. Management agreed that cost basis recognition did not truly represent the value of the receivables on the balance sheet, as the loans are made at interest rates that are less than market rate. Therefore, for reporting purposes the receivables are recorded at amortized cost using the effective interest rate method.

The assumptions used in determining the fair valuation of the loans to schools are factored around the use of the Reserve Bank of Australia cash rate and Government Authority rates which are applied to each loan. Any changes in these assumptions will impact the carrying amount of the loans to schools.

The models used to value the loans receivables are constantly reviewed and any future revisions to the assumptions made will be in line with amendments to accounting standards.

Operating lease commitments

The Department has entered into leases for buildings. Some of the leases relate to buildings of a temporary nature and it has been determined that the lessor retains substantially all the risks and rewards incidental to ownership. Accordingly, these leases have been classified as operating leases.

Note 5. Key sources of estimation uncertainty

The Department makes key estimates and assumptions concerning the future. These estimates and assumptions are based on historical experience and various other factors that have a significant risk of causing a material adjustment to the carrying amount of assets and liabilities within the next financial year.

Long Service Leave

In calculating the Department's long service leave provision, several estimations and assumptions have been made. These include expected future salary rate, salary inflation, discount rate, employee retention rate and expected future payments. Any changes in these estimations and assumptions may impact on the carrying amount of the long service leave provision.

Note 6. Disclosure of changes in accounting policy and estimates

Initial application of an Australian Accounting Standard

The Department has applied the following Australian Accounting Standards effective for annual reporting periods beginning on or after 1 July 2009 that impacted on the Department.

AASB 101	<i>Presentation of Financial Statements</i> (September 2007). This Standard has been revised and introduces a number of terminology changes as well as changes to the structure of the Statement of Changes in Equity and the Statement of Comprehensive Income. It is now a requirement that owner changes in equity be presented separately from non-owner changes in equity. There is no financial impact resulting from the application of this revised Standard.
AASB 2007-10	<i>Further Amendments to Australian Accounting Standards arising from AASB 101</i> . This Standard changes the term 'general purpose financial report' to 'general purpose financial statements', where appropriate in Australian Accounting Standards and the Framework to better align with IFRS terminology. There is no financial impact resulting from the application of this Standard.
AASB 2009-2	<i>Amendments to Australian Accounting Standards – Improving Disclosures about Financial Instruments AASB 4, AASB 7, AASB 1023 & AASB 1038</i> . This Standard amends AASB 7 and will require enhanced disclosures about fair value measurements and liquidity risk with respect to financial instruments. There is no financial impact resulting from the application of this Standard.

Future impact of Australian Accounting Standards not yet operative

The Department cannot early adopt an Australian Accounting Standard unless specifically permitted by TI 1101 *Application of Australian Accounting Standards and Other Pronouncements*. Consequently, the Department has not applied early any following Australian Accounting Standards that have been issued that may impact the Department. Where applicable, the Department plans to apply these Australian Accounting Standards from their application date.

AASB 2009-11 Operative for reporting periods beginning on/after 1 Jan 2013	<i>Amendments to Australian Accounting Standards arising from AASB 9 [AASB 1, 3, 4, 5, 7, 101, 102, 108, 112, 118, 121, 127, 128, 131, 132, 136, 139, 1023 & 1038 and Interpretations 10 & 12]</i> . The amendment to AASB 7 requires modification to the disclosure of categories of financial assets. The Department does not expect any financial impact when the Standard is first applied. The disclosure of categories of financial assets in the notes will change.
---	---

Note 7. Employee benefits expense

	2010 \$000	2009 \$000
Wages and salaries ^(a)	5,003	4,027
Superannuation – defined contribution plans ^(b)	515	430
Long service leave ^(c)	336	(66)
Annual Leave ^(c)	137	297
Other Related Expenses	12	42
	6,003	4,730

(a) Includes the value of the fringe benefit to the employee plus the fringe benefits tax component.

(b) Defined contribution plans include West State, Gold State and GESB Super Scheme (contributions paid).

(c) Includes a superannuation contribution component.

Employment on-costs such as workers' compensation insurance are included at note 13 'Other expenses'.

The employment on-costs liability is included at note 27 'Provisions'.

The associated increase in wages and salaries is attributed to the International Education Programme and Grant Auditing Programme being commenced. The FTE level increased from 57 to 62.

Note 8. Supplies and services

	2010	2009
	\$000	\$000
Communications	55	57
Consultants and contractors ^(a)	3,116	1,809
Consumables	190	214
Travel	208	170
Other	988	817
	4,557	3,067

- (a) The development of the new initiative for the International Education Programme resulted in a \$1.3 million service level agreement with Perth Education City, in 2009-10.

Note 9. Depreciation

	2010	2009
	\$000	\$000
<u>Depreciation</u>		
Equipment & Furniture	25	15
Office Fitout	12	4
Computer Equipment	15	16
Total depreciation	52	35

Note 10. Finance costs

	2010	2009
	\$000	\$000
Loan fair value expense	5,874	11,598
Interest expense	11,817	13,184
Finance costs expensed	17,691	24,782

The loan fair value expense represents the write-down to fair value of the low interest loans provided in 2009-10. Given the decreasing margin between market rate and the interest rates charged to schools the discount applied was substantially reduced. The interest expense represents amounts charged for loans provided to the Department by the Western Australian Treasury Corporation (WATC). Refer to notes 15, and 22 for further details.

Note 11. Accommodation expenses

	2010	2009
	\$000	\$000
Lease rentals	350	380
Repairs and maintenance	10	13
Cleaning	30	28
	390	421

Note 12. Grants and subsidies

	2010	2009
	\$000	\$000
<u>Recurrent</u>		
Scholarships and grants	67	126
	67	126

Note 13. Other expenses

	2009	2008
	\$000	\$000
Doubtful debts expense	3	-
Employment on-costs ^(a) [refer to note 7 'Employee benefits expense']	49	74
Other ^(b)	111	50
	163	124

(a) Includes workers' compensation insurance and other employment on-costs. The on-costs liability associated with the recognition of annual and long service leave liability is included at note 27 'Provisions'. Superannuation contributions accrued a part of the provision for leave and employee benefits and are not included in employment on-costs.

(b) Audit fee, see note 37 'Remuneration of auditor'.

Note 14. User charges and fees

	2010	2009
	\$000	\$000
Registration Fees	868	1,068
	868	1,068

Registration fees are collected by the Department under the *Education Service Providers (Full Fee Overseas Students) Registration Act 1991*, *Higher Education Act 2004* and from July 2006 the *Vocational Education and Training Act 1996*.

Note 15. Interest revenue

	2010	2009
	\$000	\$000
Interest Revenue (LILS)	13,950	13,072
	13,950	13,072

The amount reflects the interest charges received and receivable from low interest loans to schools. In 2008-09 loans to the value of \$29.5m were advanced to schools, a further \$26.5m has been advanced in 2009-10.

Interest revenue has been calculated using the effective interest method in compliance with AASB 139.46. On a cash basis the interest revenue would have been \$5,822,000 in 2009-10 (2008-09 - \$5,406,000), with the remainder being an effective interest rate accrual. Non-government education sector institutions that participate in the Low Interest Loan Scheme repay financial costs applicable to their loan/s. The balance of the interest rate charged at note 10 is met by a Government appropriation. The funding forms part of the appropriation provided at note 18.

Note 16. Commonwealth grants and contributions

	2010	2009
	\$000	\$000
Western Australian Aboriginal Education & Training Council (WAAETC)	974	433
	974	433

Grants are provided for recurrent purposes under the Indigenous Education Programme (\$474,000) 2009-12 Quadrennium, and Parental and Community Engagement Programme 2010-12 (\$500,000) by the Department of Education, Employment and Workplace Relations.

Note 17. Other revenue

	2010	2009
	\$000	\$000
Miscellaneous Revenue	223	97
EVS Contributions	11	12
	234	109

Note 18. Income from State Government

	2010	2009
	\$000	\$000
Appropriation received during the year:		
Service appropriation ^(a)	14,936	15,826
	14,936	15,826
The following liabilities have been assumed by other state government agencies during the financial year:		
Resources received free of charge^(b)		
Determined on the basis of the following estimates provided by agencies:		
State Solicitors Office	32	14
Landgate	59	14
Dept of Education & Training	24	106
DTF-Building Maintenance	6	-
Dept of Workforce Development	134	-
Total resources received free of charge	255	134
	15,191	15,960

(a) Service appropriations are accrual amounts reflecting the net cost of services delivered. The appropriation revenue comprises a cash component and a receivable (asset). The receivable (holding account) comprises the depreciation expense for the year and any agreed increase in leave liability during the year.

(b) Where assets or services have been received free of charge or for nominal cost, the Department recognises revenue equivalent to the fair value of the assets and/or the fair value of those services that can be reliably measured and which would have been purchased if they were not donated, and those fair values shall be recognised as assets or expenses, as applicable. Where the contributions of assets or services are in the nature of contributions by owners, the Department makes an adjustment direct to equity.

Discretionary transfers of assets between State Government agencies are reported as assets assumed/ (transferred) under Income from State Government. Non-discretionary non-reciprocal transfers of net assets (i.e. restructuring of administrative arrangements) have been classified as Contributions by Owners (CBOs) under TI 955 and are taken directly to equity.

Note 19. Restricted cash and cash equivalents

	2010	2009
	\$000	\$000
<u>Non-current</u>		
Accrued salaries suspense account	214	124
	214	124

Amount held in the suspense account is only to be used for the purpose of meeting the 27th pay in a financial year that occurs every 11 years.

Note 20. Receivables

	2010 \$000	2009 \$000
<u>Current</u>		
Receivables	196	68
Interest Receivable from Schools	620	790
Leave Transfer Re-coup	-	84
Pre-payments	-	3
GST receivable	106	56
	922	1,001

The Department does not hold any collateral as security or other credit enhancements relating to receivables. See also note 3(m) 'Receivables' and note 35 'Financial instruments'.

Note 21. Amounts receivable for services

	2010 \$000	2009 \$000
Current	35	176
Non-current	141	94
	176	270

Represents the non-cash component of service appropriations. It is restricted in that it can only be used for asset replacement or payment of leave liability. See 3(l) 'Amounts receivable for services (holding account)'.

Note 22. Loans to schools

	2010 \$000	2009 \$000
<u>Current</u>		
Loans to Schools	26,488	23,311
Allowance for Impairment of Receivables	-	(170)
Total current	26,488	23,141
<u>Non-current</u>		
Amount Due & Receivable after 12 months	152,916	150,888
Total non-current	152,916	150,888
Reconciliation of changes in the allowance for impairment of receivables:		
Balance at start of year	170	170
Doubtful debts expense recognised in the statement of comprehensive income	-	-
Amounts written off during the year	(170)	-
Amount recovered during the year	-	-
Balance at end of year	-	170

Loans to the non-government sector are at a reduced average interest rate of 2.37% per annum as the Department meets the subsidised interest on behalf of the borrowers through a government appropriation (refer note 15).

The subsequent measurement is that loans are measured at amortised cost. The loans have a maturity term not exceeding 15 years, as per the LILS guidelines. These financial instruments are not held for trading purposes. See also note 35 'Financial Instruments'.

Note 23. Property, plant and equipment

	2010 \$000	2009 \$000
<u>Land</u>		
At fair value ^(a)	1,300	1,300
	1,300	1,300
<u>Computer Equipment</u>		
At Cost	49	49
Accumulated depreciation	(48)	(33)
	1	16
<u>Equipment & Furniture</u>		
Accumulated depreciation	88 (59)	73 (47)
	29	26
<u>Office Fitout</u>		
At cost	605	605
Accumulated depreciation	(512)	(487)
	93	118
Total	1,423	1,460

- (a) Land and buildings were revalued as at 1 July 2009 by the Western Australian Land Information Authority (Valuation Services). The valuations were performed during the year ended 30 June 2010 and recognised at 30 June 2010. In undertaking the revaluation, fair value was determined by reference to market values for land.

Reconciliations of the carrying amounts of property, plant, equipment and vehicles at the beginning and end of the reporting period are set out in the table below.

	Land \$000	Office Equipment \$000	Furniture and equipment \$000	Computer equipment \$000	Total \$000
2010					
Carrying amount at start of year	1,300	118	26	16	1,460
Additions	-	-	15	-	15
Other disposals	-	-	-	-	-
Revaluation increments	-	-	-	-	-
Depreciation	-	(25)	(12)	(15)	(52)
Carrying amount at end of year	1,300	93	29	1	1,423
	Land \$000	Office Equipment \$000	Furniture and equipment \$000	Computer equipment \$000	Total \$000
2009					
Carrying amount at start of year	1,500	-	41	32	1,573
Additions	-	122	-	-	122
Other disposals	-	-	-	-	-
Revaluation (increments/decrements)	(200)	-	-	-	(200)
Depreciation	-	(4)	(15)	(16)	(35)
Carrying amount at end of year	1,300	118	26	16	1,460

Note 24. Impairment of assets

There were no indications of impairment to property, plant and equipment, infrastructure and intangible assets at 30 June 2010.

The Department held no goodwill or intangible assets with an indefinite useful life during the reporting period, and at the end of the reporting period there were no intangible assets not yet available for use.

All surplus assets as at 30 June 2010 have been donated to Western Australian Government schools, where practicable.

Note 25. Payables

	2010 \$000	2009 \$000
<u>Current</u>		
Trade payables	123	252
Accrued Interest	3,233	2,978
Accrued salaries	55	57
Superannuation on Accrued Salaries	-	6
Total current	3,411	3,293

See also note 3(n) 'Payables' and note 35 'Financial instruments'.

Note 26. Borrowings

The Department borrows from the Western Australian Treasury Corporation (WATC) to finance loans provided under the Low Interest Loan Scheme. In 2009-10 a further \$26.5 million was utilised to fund loans of that amount to the non-government education sector.

	2010 \$000	2009 \$000
<u>Current</u>		
WATC Loans ^(a)	26,488	23,311
Total current	26,488	23,311
<u>Non-current</u>		
WATC Loans ^(a)	201,719	201,943
Total non-current	201,719	201,943

(a) The carrying amounts are equivalent to their net fair values. Loans are borrowed at an average rate of interest of 4.86% (2009 - 4.81%). The \$26,488 million in current borrowings relates to the portion of principal repayments payable to WATC within the next 12 months. This amount is derived from estimates provided through the Low Interest Loans System and based on loan repayments from the schools.

Note 27. Provisions

	2010 \$000	2009 \$000
Current		
<i>Employee benefits provision</i>		
Annual leave ^(a)	490	333
Long service leave ^(b)	505	281
	995	614
<i>Other provisions</i>		
Employment on-costs ^(c)	54	61
	54	61
	1,049	675
Non current		
<i>Employee benefits provision</i>		
Long service leave ^(b)	337	274
	337	274
<i>Other provisions</i>		
Employment on-costs ^(c)	40	33
	377	307

- (a) Annual leave liabilities have been classified as current as there is no unconditional right to defer settlement for at least 12 months after the reporting period. Assessments indicate that actual settlement of the liabilities will occur as follows:

	2010 \$000	2009 \$000
Within 12 months of the end of the reporting period	285	273
More than 12 months after the reporting period	205	60
	490	333

- (b) Long service leave liabilities have been classified as current where there is no unconditional right to defer settlement for at least 12 months after the reporting period. Assessments indicate that actual settlement of the liabilities will occur as follows:

	2010 \$000	2009 \$000
Within 12 months of the end of the reporting period	93	53
More than 12 months after the reporting period	749	502
	842	555

- (c) The settlement of annual and long service leave liabilities gives rise to the payment of employment on-costs including workers' compensation insurance. The provision is the present value of expected future payments. The associated expense, apart from the unwinding of the discount (finance cost), is disclosed in note 13 'Other expenses'.

Movements in other provisions

Movements in each class of provisions during the financial year, other than employee benefits, are set out below.

Employment on-cost provision

	2010 \$000	2009 \$000
Carrying amount at start of year	33	10
Additional provisions recognised	7	23
Carrying amount at end of year	40	33

Note 28. Equity

Equity represents the residual interest in the net assets of the Department. The Government holds the equity interest in the Department on behalf of the community. The asset revaluation surplus represents that portion of equity resulting from the revaluation of non-current assets.

Contributed equity

	2010 \$000	2009 \$000
Balance at start of period	18	18
Total contributions by owners	18	18
Balance at end of period	18	18

Reserves

	2010 \$000	2009 \$000
<u>Asset revaluation surplus</u>		
Balance at start of year	870	1,070
Net revaluation increments/(decrements):		
Land	-	(200)
Balance at end of year	870	870

Accumulated surplus/(deficit)

	2010 \$000	2009 \$000
Balance at start of year	(45,863)	(43,220)
Result for the period	2,294	(2,643)
Balance at end of year	(43,569)	(45,863)

Note 29. Notes to the Statement of Cash Flows

Reconciliation of cash

Cash at the end of the financial year as shown in the Statement of Cash Flows is reconciled to the related items in the Statement of Financial Position as follows:

	2010 \$000	2009 \$000
Cash and cash equivalents	8,224	7,670
Restricted cash and cash equivalents [refer to note 19 'Restricted cash and cash equivalents']	214	124
	8,438	7,794

Reconciliation of net cost of services to net cash flows provided by/(used in) operating activities

	2010 \$000	2009 \$000
Net cost of services	(12,897)	(18,603)
<u>Non-cash items:</u>		
Depreciation and amortisation expense (note 9)	52	35
Doubtful debts expense (note 13)	3	-
<u>(Increase)/decrease in assets:</u>		
Current receivables ^(c)	(330)	207
Low Interest Loans	15,420	10,804
Non-current receivables	(20,372)	(16,592)
<u>Increase/(decrease) in liabilities:</u>		
Current payables ^(c)	824	(50)
Net GST receipts/(payments) ^(a)	311	425
Change in GST in receivables/payables ^(b)	(334)	(237)
Net cash provided by/(used in) operating activities	(17,323)	(24,011)

(a) This is the net GST paid/received, i.e. cash transactions.

(b) This reverses out the GST in receivables and payables.

(c) Note that the Australian Taxation Office (ATO) receivable/payable in respect of GST and the receivable/payable in respect of the sale/purchase of non-current assets are not included in these items as they do not form part of the reconciling items.

At the end of the reporting period, the Department had fully drawn on all financing facilities, details of which are disclosed in the financial statements.

Note 30. Resources provided free of charge

	2010 \$000	2009 \$000
Resources provided free of charge	-	-
	-	-

During the year no resources were provided to other agencies free of charge for functions outside the normal operations of the Department.

Note 31. Commitments

Capital expenditure commitments

At balance sheet date there were no Capital expenditure commitments.

Lease commitments

Commitments in relation to leases contracted for at the end of the reporting period but not recognised in the financial statements are payable as follows:

Within 1 year

Later than 1 year and not later than 5 years

Representing:

Cancellable operating leases

Non-cancellable operating leases

Future finance charges on finance leases

2010	2009
\$000	\$000
445	571
700	2,246
1,145	2,817
-	-
1,145	2,817
-	-
1,145	2,817

Non cancellable operating lease commitments

Commitments for minimum lease payments are payable as follows:

Within 1 year

Later than 1 year and not later than 5 years

2010	2009
\$000	\$000
413	571
698	2,246
1,111	2,817

The property lease is a non-cancellable lease with a five year term, with rent payable monthly in advance. Contingent rent provisions within the lease agreement require that the minimum lease payments shall be increased by the Perth CPI (all groups). An option exists to renew the lease at the end of the five year term for an additional term of five years.

These commitments are all exclusive of GST.

Note 32. Contingent liabilities and contingent assets

At balance sheet date there were no contingent liabilities or assets.

Note 33. Events occurring after the end of the reporting period

No events have occurred after the balance sheet date, which would cause the financial statements to be misleading in the absence of disclosure.

Note 34. Explanatory statement

Significant variations between estimates and actual results for income and expense as presented in the financial statement titled 'Summary of Consolidated Account Appropriations and Income Estimates' are shown below. Significant variations are considered to be those greater than \$500,000.

Total appropriations provided to deliver services

Significant variances between estimate and actual for 2010

	2010 Estimate \$000	2010 Actual \$000	Variance \$000
Total cost of services expenditure	36,907	28,923	7,984

The decrease in total cost of service expenditure is mainly due to, a decrease in interest subsidy payments to WATC as a result of lower interest rates. \$5 million was refunded to the Department of Treasury and Finance, in 2010 due to lower finance costs.

Significant variances between actual results for 2009 and 2010

	2010 \$000	2009 \$000	Variance \$000
Total income	14,936	15,826	(890)

The decrease in total Income is due to the valuation under AASB 139 for the Low Interest Loan Scheme (LILS).

Total administered transactions

Significant variances between actual for 2010 and 2009 – Total administered transactions:

	2010 \$000	2009 \$000	Variance \$000
Administered grants, subsidies and other transfer payments	307,886	276,075	31,811

The 11.5% increase was driven primarily by a special-purpose supplementary financial assistance payment of \$8.3 million which was made to the non-government sector during the year to assist schools with meeting the increasing cost of teachers' salaries.

Significant variances between actual for 2010 and 2009 – Administered income

	2010 \$000	2009 \$000	Variance \$000
Total Administered Income	308,101	276,452	31,649

The 11.4% increase was driven primarily by a special-purpose supplementary financial assistance payment of \$8.3 million which was made to the non-government sector during the year to assist schools with meeting the increasing cost of teachers' salaries.

Significant variances between estimate and actual for 2010 - Administered Transactions

	2010 Estimated \$000	2010 Actual \$000	Variance \$000
Administered grants, subsidies and other transfer payments	312,486	307,886	4,600

The reason for the variance between the 2010 Actual and the 2010 Estimate (-1.5%) is due to slightly lower than expected expenditure on per capita grants, which occurred as a result of a minor overestimation of the projected number of students (in each respective State Funding Category) attending non-government schools in 2010.

Significant variances between estimate and actual for 2010 - Administered Income

	2010 Estimated \$000	2010 Actual \$000	Variance \$000
Total Administered Income	312,701	308,101	4,600

The reason for the variance between the 2010 Actual and the 2010 Estimate (-1.5%) is due to slightly lower than expected expenditure on per capita grants, which occurred as a result of a minor overestimation of the projected number of students (in each respective State Funding Category) attending non-government schools in 2010.

Note 35. Financial instruments

(a) Financial risk management objectives and policies

Financial instruments held by the Department are cash and cash equivalents, restricted cash and cash equivalents, borrowings, finance leases, Treasurer's advances, loans and receivables, and payables. The Department has limited exposure to financial risks. The Department's overall risk management program focuses on managing the risks identified below.

Credit risk

Credit risk arises when there is the possibility of the Department's receivables defaulting on their contractual obligations resulting in financial loss to the Department.

The maximum exposure to credit risk at end of the reporting period in relation to each class of recognised financial assets is the gross carrying amount of those assets inclusive of any provisions for impairment as shown in the table at note 35(c) 'Financial instruments disclosures' and note 20 'Receivables'.

Credit risk associated with the Department's financial assets is minimal because the main receivable is the amounts receivable for services (holding account). For receivables other than government, the Department trades only with recognised, creditworthy third parties. The Department has policies in place to ensure that sales of products and services are made to customers with an appropriate credit history. In addition, receivable balances are monitored on an ongoing basis with the result that the Department's exposure to bad debts is minimal. At the end of the reporting period there were no significant concentrations of credit risk.

Liquidity risk

Liquidity risk arises when the Department is unable to meet its financial obligations as they fall due.

The Department is exposed to liquidity risk through its trading in the normal course of business.

The Department has appropriate procedures to manage cash flows including drawdown of appropriations by monitoring forecast cash flows to ensure that sufficient funds are available to meet its commitments.

Market risk

Market risk is the risk that changes in market prices such as foreign exchange rates and interest rates will affect the Department's income or the value of its holdings of financial instruments. The Department does not trade in foreign currency and is not materially exposed to other price risks [for example, equity securities or commodity prices changes]. The Department's exposure to market risk for changes in interest rates relates primarily to the long-term debt obligations.

The Department's borrowings are all obtained through the Western Australian Treasury Corporation (WATC) and are at fixed rates with varying maturities. The risk is managed by WATC through portfolio diversification and variation in maturity dates. Other than as detailed in the Interest rate sensitivity analysis table at note 35(c), the Department is not exposed to interest rate risk because apart from minor amounts of restricted cash, all other cash and cash equivalents and restricted cash are non-interest bearing and have no borrowings other than the Treasurer's advance (non-interest bearing), WATC borrowings and finance leases (fixed interest rate).

(b) Categories of financial instruments

In addition to cash and bank overdraft, the carrying amounts of each of the following categories of financial assets and financial liabilities at the end of the reporting period are as follows:

	2010 \$000	2010 \$000
<u>Financial Assets</u>		
Cash and cash equivalents	8,224	7,670
Restricted cash and cash equivalents	214	124
Loans and receivables ^(a)	180,396	175,244
<u>Financial Liabilities</u>		
Financial liabilities measured at amortised cost	231,618	228,547

(c) Financial instrument disclosures

Credit risk and interest rate exposures

The following table disclose the Department's maximum exposure to credit risk, interest rate exposures and the ageing analysis of financial assets. The Department's maximum exposure to credit risk at the end of the reporting period is the carrying amount of financial assets as shown below. The table discloses the ageing of financial assets that are past due but not impaired and impaired financial assets. The table is based on information provided to senior management of the Department.

The Department does not hold any collateral as security or other credit enhancement relating to the financial assets it holds.

The Department does not hold any financial assets that had to have their terms renegotiated that would have otherwise resulted in them being past due or impaired.

Interest rate exposures and ageing analysis of financial assets ^(a)

			<u>Interest rate exposure</u>			<u>Past due but not impaired</u>					
	Weighted Average Effective Interest Rate	Carrying Amount	Fixed interest rate	Variable interest rate	Non-interest bearing	Up to 3 months	3-12 months	1-2 years	2-5 years	More than 5 years	Impaired financial assets
	%	\$000	\$000	\$000	\$000	\$000	\$000	\$000	\$000	\$000	\$000
<u>Financial Assets</u>											
2010											
Cash and cash equivalents		8,224	-	-	8,224	-	-	-	-	-	-
Restricted cash and cash equivalents		214	-	-	214	-	-	-	-	-	-
Receivables ^(a)		816	-	-	816	549	242	25	-	-	-
Loans and advances	7.99%	179,404	179,404	-	-	-	-	-	-	-	-
Amounts receivable for services		176	-	-	176	-	-	-	-	-	-
		188,834	179,404	-	9,430	549	242	25	-	-	-
2009											
Cash and cash equivalents		7,670	-	-	7,670	-	-	-	-	-	-
Restricted cash and cash equivalents		124	-	-	124	-	-	-	-	-	-
Receivables ^(a)		945	-	-	879	57	3	6	-	-	-
Loans and advances	8.21%	174,199	174,199	-	-	-	-	-	-	-	170
Amounts receivable for services		270	-	-	270	-	-	-	-	-	-
		183,208	174,199	-	8,943	57	3	6	-	-	170

(a) The amount of receivables excludes the GST recoverable from the ATO (statutory receivable).

Liquidity risk

The following table details the contractual maturity analysis for financial liabilities. The contractual maturity amounts are representative of the undiscounted amounts at the end of the reporting period. The table includes interest and principal cash flows. An adjustment has been made where material.

Interest rate exposure and maturity analysis of financial liabilities

	Weighted Average Effective Interest Rate	<u>Interest rate exposure</u>						<u>Maturity date</u>				
		Carrying Amount	Fixed interest rate	Variable interest rate	Non-interest bearing	Adjustment for discounting	Total Nominal Amount	Up to 3 months	3-12 months	1-2 years	2-5 years	More than 5 years
	%	\$000	\$000	\$000	\$000	\$000	\$000	\$000	\$000	\$000	\$000	\$000
<u>Financial Liabilities</u>												
2010												
Payables		3,411	-	-	3,411	-	-	3,411	-	-	-	-
Other borrowings		-	-	-	-	-	-	-	-	-	-	-
Finance lease liabilities		-	-	-	-	-	-	-	-	-	-	-
Amounts due to the WATC	4.86%	228,207	-	228,207	-	-	-	6,354	20,134	26,402	68,538	106,779
		231,618	-	228,207	3,411	-	-	9,765	20,134	26,402	68,538	106,779
2009												
Payables		3,293	-	-	3,293	-	-	3,293	-	-	-	-
Other borrowings		-	-	-	-	-	-	-	-	-	-	-
Finance lease liabilities		-	-	-	-	-	-	-	-	-	-	-
Amounts due to the WATC	4.81%	225,254	-	225,254	-	-	-	5,669	17,642	24,579	69,910	107,454
		228,547	-	225,254	3,293	-	-	8,692	17,642	24,579	69,910	107,454

Interest rate sensitivity analysis

The following table represents a summary of the interest rate sensitivity of the Department's financial assets and liabilities at the end of the reporting period on the surplus for the period and equity for a 1% change in interest rates. It is assumed that the change in interest rates is held constant throughout the reporting period.

		-100 basis points		+100 basis points	
	Carrying amount \$000	Surplus/(Deficit) \$000	Equity \$000	Surplus/(Deficit) \$000	Equity \$000
2010					
<u>Financial Assets</u>					
Restricted cash and cash equivalents	8,224	-	-	-	-
Receivables	816	-	-	-	-
Loans to Schools	179,404	(1,794)	(1,794)	1,794	1,794
<u>Financial Liabilities</u>					
Payables	3,411	-	-	-	-
Borrowings	228,207	2,282	2,282	(2,282)	(2,282)
Total Increase/(Decrease)		488	488	(488)	(488)

		-100 basis points		+100 basis points	
	Carrying amount \$000	Surplus \$000	Equity \$000	Surplus \$000	Equity \$000
2009					
<u>Financial Assets</u>					
Restricted cash and cash equivalents	7,670	-	-	-	-
Receivables	945	-	-	-	-
Loans to Schools	174,199	(1,742)	(1,742)	1,742	1,742
<u>Financial Liabilities</u>					
Restricted cash and cash equivalents					
Receivables	3,291	-	-	-	-
Loans to Schools	225,254	2,252	2,252	(2,252)	(2,252)
Total Increase/(Decrease)		510	510	(510)	(510)

Fair values

All financial assets and liabilities recognised in the statement of financial position, whether they are carried at cost or fair value, are recognised at amounts that represent a reasonable approximation of fair value unless otherwise stated in the applicable notes.

Note 36. Remuneration of senior officers

The number of senior officers whose total fees, salaries, superannuation, non-monetary benefits and other benefits for the financial year fall within the following bands are:

	2010 No	2009 No
Below \$80,000	-	-
80,001 - 90,000		1
110,001 - 120,000	1	1
130,001 - 140,000		1
150,001 - 160,000	3	1
240,001 - 250,000	1	1
Total number of senior officers	5	5

The total remuneration of senior officers, including the superannuation expense, incurred by the Department is:

	2010 \$000	2009 \$000
	825	779
Total remuneration of senior officers	825	779

Note 37. Remuneration of auditor

Remuneration payable to the Auditor General in respect of the audit for the current financial year is as follows:

	2010 \$000	2009 \$000
Auditing the accounts, financial statements and performance indicators	35	30
	35	30

Note 38. Supplementary financial information

(a) Write-offs

During the financial year \$173,000 (2009 Nil) was written off the Department's asset register under the authority of the Minister.

	2010 \$000	2009 \$000
The Accountable Authority	-	-
The Minister	173	-
Executive Council	-	-
	173	-

(b) Losses through theft, defaults and other causes

During the financial year the Department did not suffer any losses through theft, defaults and other causes apart from bad debt write-off mentioned in (a) above.

(c) Gifts of public property

During the financial year the Department provided no gifts of public property.

Note 39. Administered expenses and income

	2010 \$000	2009 \$000
<u>Expenses</u>		
Transfer Payments	308,857	278,809
Total Administered Expenses	308,857	278,809
<u>Income</u>		
For transfer	308,101	276,452
Total Administered Income	308,101	276,452

Note 40. Administered assets and liabilities

	2010 \$000	2009 \$000
<u>Current Assets</u>		
Cash and cash equivalents	6,450	7,709
Receivables	1,046	556
Low interest loans	3,446	5,266
Total Administered Current Assets	10,942	13,531
<u>Non-Current Assets</u>		
Low interest loans	1,110	4,556
Total Administered Non-Current Assets	1,110	4,556
TOTAL ADMINISTERED ASSETS	12,052	18,087
<u>Current Liabilities</u>		
Borrowings	3,446	5,266
Accrued Interest	23	23
Payables	-	-
Total Administered Current Liabilities	3,469	5,289
<u>Non-Current Liabilities</u>		
Borrowings	1,110	4,556
Total Administered Non-Current Liabilities	1,110	4,556
TOTAL ADMINISTERED LIABILITIES	4,579	9,845

Notes to the schedule of administered items

(i) Transfer payments

The Department is responsible for transfers of appropriations to eligible beneficiaries consistent with the requirements of the *School Education Act 1999*, the *School Education Regulations 2000* and applicable Government Gazettes. The Department does not control amounts for transfer but acts only as an agent. Except for the funding received for the unfunded superannuation liabilities of higher education institutions of \$4.2 million, and debt charges of \$52,000, the remaining \$295.2 million relates to per capita funding.

The Department of Treasury and Finance (DTF) provides for per capita grants funding, based on student growth and the movement in Average Government School Recurrent Cost (AGSRC) index. The Government's policy commitment to the non-government education sector, is that average per capita of total expenditure on non-government students, including payment of direct per capita grants to schools, should be "no less than 25%" of the adjusted AGSRC.

	2010 \$000	2009 \$000
Financial assistance for non-government schools and independent schools	295,242	266,731
Interest payments to DTF	215	393
Other grants and subsidies	9,145	7,895
Subsidies for debt charges incurred by statutory authorities in the education sector	52	57
Subsidies for unfunded superannuation liabilities of higher education institutions	4,203	3,733
	308,857	278,809

The administered loans were funded by DTF, prior to the enactment of the *Acts Amendment (Education Loan Scheme) Act 1998*. This Act, together with the approval from the DTF under Section 23A of the *Financial Administration and Audit Act 1985*, allowed the Department to borrow moneys from the Western Australian Treasury Corporation (WATC) for on-lending to the schools and to retain the loan repayments from the borrowers. Loans after the *Acts Amendment (Education Loan Scheme) Act 1998* are deemed controlled.

(ii) Transfer revenues

Transfer revenues	2010 \$000	2009 \$000
Financial assistance for non-government schools and independent schools	294,485	264,390
Interest payments to DTF	215	377
Other grants and subsidies	9,145	7,895
Subsidies for debt charges incurred by statutory authorities in the education sector	52	57
Subsidies for unfunded superannuation liabilities of higher education institutions	4,204	3,733
	308,101	276,452

Key Performance Indicators

CERTIFICATION OF KEY PERFORMANCE INDICATORS

I hereby certify that the performance indicators are based on proper records, are relevant and appropriate for assisting users to assess the Department of Education Services' performance, and fairly represent the performance of the Department of Education Services for the financial year ended 30 June 2010.

A handwritten signature in black ink, consisting of a large, stylized 'R' followed by a horizontal line that ends in a small loop.

Richard Strickland
ACCOUNTABLE AUTHORITY

Date: 15 September 2010

KEY PERFORMANCE INDICATORS

The Department's Effectiveness and Efficiency Indicators are measures of our success in achieving our Outcome through the delivery of our Services. The Department's Outcome for 2009-10 is:

- Registered and/or accredited education and training providers comply with the appropriate legislative and/or other regulatory requirements.

This revised Outcome, which was approved by the Outcome Structure Review Group of the Department of Treasury and Finance in April 2007, encapsulates the principal function of the Department as the State's education and training regulatory agency.

This Outcome is consistent with the "Outcomes Based Service Delivery" Government Goal as outlined in the "Annual Reporting Framework 2008-2009" document: "Greater focus on achieving results in key service delivery areas for the benefit of all Western Australians".

The description of the Department's Services approved by the Outcome Structure Review Group is:

- Regulation, Funding, and Policy Advice.

Provision of funding and policy advice services are in addition to the principal regulatory services provided by the Department.

EFFECTIVENESS INDICATORS

General Note

Effectiveness can be measured by the percentage of registered or authorised education and training providers that comply with the relevant statutory requirements. Each statute (Act of Parliament) sets out a period for which each provider is registered or authorised and the provisions for determining and dealing with non-compliance. The higher the percentage of compliance, the more effective are the Department's processes for identifying non-compliance through inspecting, auditing and/or assessing providers.

Key Effectiveness Indicator 1		
Percentage of non self-accrediting higher education institutions complying with accreditation and authorisation requirements of the <i>Higher Education Act 2004</i>		
	TARGET %	ACTUAL %
2009-10	100.0	100.0
2008-09	100.0	100.0
2007-08	100.0	90.9

Notes to the Indicator

- Australian universities are "self-accrediting" in that each university has authority under its own Act of Parliament to responsibly develop and provide its own higher education courses of study without reference to, or without requiring the approval of, other parties. The emergence of institutions that are not universities but who seek to develop and provide higher education has been witnessed in recent years. All State and Territories have moved to enact legislation to preserve the autonomy and authority of the universities and to require these other institutions to be "authorised" and to submit their intended courses for "accreditation" (i.e. recognition) against established benchmarks. For clarity, such institutions are called "non-self-accrediting" higher education institutions to distinguish them from universities.
- This indicator is calculated by determining the number of "non-self-accrediting" higher education institutions during a financial year that fully comply with the requirements of the Higher Education Act 2004 expressed as a percentage of the total number of authorised institutions. The total includes all existing and new institutions authorised to operate during a financial year.

3. Compliance is mainly assessed when an institution is inspected for either course accreditation and authorisation or renewal of course accreditation and authorisation, or through annual assessment of its operations. This may also occur at any time during the period of course accreditation and authorisation. An institution is considered to have complied if its course accreditation and authorisation was not revoked or suspended, or made subject to a relevant condition to satisfy the requirements of the Act. Institutions not subject to these procedures during a financial year are deemed to comply.
4. The Act provides for accreditation of courses and the consequent authorisation of an institution for a period of five years and for its operations and compliance with the Act to be assessed annually. Accreditation of courses and authorisation of institutions is determined under the Act by the Minister for Education on advice and recommendations received from Higher Education Advisory Committees appointed by the Minister (or by the Chief Executive Officer of the Department under the Minister's delegation) whose members, each with experience in higher education, assess institutions' compliance with the requirements of the Act.

Key Effectiveness Indicator 2		
Percentage of non-government schools complying with registration requirements of the <i>School Education Act 1999</i>		
	TARGET %	ACTUAL %
2009-10	80.0	97.4
2008-09	99.0	94.1
2007-08	98.0	96.8

Notes to the Indicator

1. This indicator is calculated by determining the number of non-Catholic non-government schools during a financial year that fully comply with the requirements of the School Education Act 1999 expressed as a percentage of the total number of registered non-Catholic non-government schools. The total includes all existing and new non-Catholic non-government schools registered to operate during a financial year.
2. Compliance is mainly assessed when a school is inspected for either registration or renewal of registration. This may also occur at any time during the period of registration. A school is considered to have complied if its registration was not cancelled or made subject to a condition, or no Ministerial direction to comply with a standard approved for registering schools was given. Schools not subject to these procedures during a financial year are deemed to comply.
3. The Act provides for registration and renewal of registration for a period of not less than one year and not more than seven years. Registration and re-registration is determined under the Act by the Minister for Education on advice and recommendations received from the Department following the inspection of schools.
4. The reduction in the targeted percentage of schools which comply with registration requirements is due to a change in the methodology for measuring the number of schools not complying, which now includes the number of schools re-registered with conditions and the number of schools given directions to comply with a registration standard. The new measures were introduced for 2009-10 as part of a range of initiatives to strengthen the accountability of non-government schools.
5. During 2009-10, the number of schools deemed non-compliant was lower than expected; therefore the actual percentage of schools complying was higher than the target. The following sanctions were imposed: four schools were re-registered with conditions.

Key Effectiveness Indicator 3

Percentage of providers of education services to full fee international students complying with registration requirements of the *Education Service Providers (Full Fee Overseas Students) Registration Act 1991 (WA)* and the *Education Services for Overseas Students Act 2000 (C'th)*

	TARGET %	ACTUAL %
2009-10	100.0	96.7
2008-09	100.0	100.0
2007-08	98.0	93.3

Notes to the Indicator

1. This indicator is calculated by determining the number of providers during a financial year that fully comply with the requirements of the *Education Service Providers (Full Fee Overseas Students) Registration Act 1991 (WA)* and the *Education Services for Overseas Students Act 2000 (C'th)* (ESOS) expressed as a percentage of the total number of registered providers. The total includes all existing and new providers registered to operate during a financial year.
2. Compliance is mainly assessed when a provider is inspected for either registration or renewal of registration or through annual review of financial viability. This may also occur at any time during the period of registration. A provider is considered to have complied if their registration was not cancelled or suspended, or made subject to a relevant condition to satisfy the requirements of the two Acts. Providers not subject to these procedures during a financial year are deemed to comply.
3. The WA Act provides for registration and renewal of registration for no more than five years. Registration and re-registration is determined under the Act by the Chief Executive Officer of the Department on advice and recommendations received from Department staff and experienced educators and financial consultants contracted to the Department who audit and/or assess providers' compliance with the requirements of the Act.
4. During 2009-10, four providers were deemed non-compliant with the legislation; therefore the actual percentage of providers complying was lower than the target. The following sanctions were imposed: four providers had their registration cancelled.

Key Effectiveness Indicator 4

Percentage of Registered Training Organisations (RTOs) compliant with the Australian Quality Training Framework (AQTF) Essential Standards for Registration

	TARGET %	ACTUAL %
2009-10	100.0	98.9
2008-09	100.0	99.8
2007-08	100.0	100.0

Notes to the Indicator

1. This indicator is calculated by determining the number of RTOs in a financial year that fully comply with the *AQTF Essential Standards for Registration* expressed as a percentage of the total number of RTOs registered. The total includes all existing and new RTOs registered to operate during a financial year.
2. Compliance is mainly assessed when an RTO is audited for either registration or renewal of registration. This may also occur at any time during the period of registration. An RTO is considered to have complied if its registration was not cancelled, suspended, varied or subject to conditions. RTOs not subject to audit during a financial year are deemed to comply.
3. The *Vocational Education and Training Act 1996 (VET Act)* provides for registration and renewal of registration for up to five years. Registration is determined under Section 58B of the VET Act by the statutory Training Accreditation Council on advice and recommendations received from experienced auditors contracted to the Department who audit RTO compliance with the requirements of the AQTF.
4. The amended VET Act came into effect on 10 June 2009. Prior to this date there was no provision for the registration of RTOs to be made subject to conditions or for their operations to be suspended for not complying with the AQTF.
5. During 2009-10, six RTOs were deemed non compliant with the AQTF. The following sanctions were imposed on their registration: one registration was cancelled; three were subject to suspension orders; one was varied; and one was subject to conditions.

EFFICIENCY INDICATORS

General Note

Expenditure of \$982,800 on accommodation and other support provided by the Department to two independent Ministerial advisory councils co-located with the Department is excluded and no efficiency indicators for the councils' functions are therefore reported.

The councils are:

- The Western Australian Aboriginal and Education Training Council (almost wholly funded by the Australian Government); and
- The Rural and Remote Education Advisory Council.

Key Efficiency Indicator 1						
Cost of regulatory services per registered provider/institution						
	2007-08		2008-09		2009-10	
	TARGET	ACTUAL	TARGET	ACTUAL	TARGET	ACTUAL
Number of registered providers/institutions	832	911	907	964	1008	1034
Cost per provider/institution	\$6,059	\$4,767	\$5,680	\$5,165	\$6,225	\$6,178

Notes to the Indicator

- The number of registered providers/institutions includes all that are registered, accredited or authorised under one or more of the relevant Acts of Parliament, or approved Ministerial guidelines, that are administered by the Department, i.e. universities; non self-accrediting higher education institutions; non-government schools; registered training organisations, and providers of education services to full fee international students.
- The increase in the 2009-10 Actual number of registered providers/institutions compared with 2008-09 is the result of new providers/institutions registered during the year, including the addition of 34 Independent Public Schools for which processes for school review are being developed. Accordingly, the increase in unit cost was commensurate with the increase in the number of providers/institutions for 2009-10.

Key Efficiency Indicator 2						
Cost of funding services per funded unit						
	2007-08		2008-09		2009-10	
	TARGET	ACTUAL	TARGET	ACTUAL	TARGET	ACTUAL
Number of funded units	128,270	126,175	131,341	130,618	134,552	134,124
Cost per funded unit	\$6.09	\$4.76	\$5.49	\$5.28	\$7.32	\$9.60

Notes to the Indicator

- A "funded unit" includes (a) a student for whom a per capita grant is paid; (b) a student to whom a scholarship is awarded; (c) an organisation recognised as a provider of a specifically funded contracted service; and (d) a loan for which an interest subsidy is paid.
- The increase in the 2009-10 Actual number of funded units compared with 2008-09 is due primarily to natural growth in student numbers in the non-government school sector.
- The increase in the 2009-10 Actual cost per funded unit compared with both the 2008-09 Actual and the 2009-10 Target, is due to:
 - ~ the increase in the total cost of services for the Department for the year (used in the calculation of the efficiency indicators) which was proportionately higher than the increase in funded units; and
 - ~ the appointment of additional staff to the relevant section in response to the Government's strategic initiative to strengthen the financial accountability of non-government schools.

Key Efficiency Indicator 3						
Hourly cost of providing policy advice and support						
	2007-08		2008-09		2009-10	
	TARGET	ACTUAL	TARGET	ACTUAL	TARGET	ACTUAL
Hours spent on providing policy advice and support	9,039	18,544	18,581	22,119	24,737	24,167
Hourly cost on providing policy advice and support	\$86.38	\$77.26	\$92.60	\$90.32	\$102.61	\$105.03

Notes to the Indicator

1. This indicator was developed as a result of the Outcome Structure Review Group's acceptance that while the Department's principal function is as a regulatory agency, there is significant expenditure on provision of policy advice and support to the Minister for Education on higher education and legislative policy matters. The indicator was first calculated in 2006-07. In 2009-10 the Government's new International Education Program initiative was added to the areas for which policy advice was required.
2. The significant increase in the Actual number of hours for 2009-10 compared with 2008-09 is explained by the appointment of additional staff to the relevant section in response to the International Education Program. Accordingly, the increase in the hourly cost in 2009-10 occurred as a result of an increase to the cost of services allocated to the Policy Advice and Support sections of the Department.

Other Financial Disclosures

PRICING POLICIES OF SERVICES PROVIDED

The Department of Education Services charges for services associated with the accreditation and registration of education and training providers and their courses on a partial cost recovery basis. Fees are charged in three areas in the performance of the Department's regulatory functions:

Higher Education: fixed fees for higher education course accreditation and/or provider authorisation (registration) in Western Australia are prescribed in the *Higher Education Regulations 2005*.

International Education: fixed fees for registration and re-registration of international education service providers in Western Australia are prescribed in the *Education Service Providers (Full Fee Overseas Students) Registration Amendment Regulations 1997* (Gazetted March 1997).

Vocational Education and Training: fees for accreditation of courses are prescribed in the *Vocational Education and Training Regulations 1996*; the authority to charge fees for registration of training providers is prescribed in these regulations but the fee is determined by the Minister.

CAPITAL WORKS

There were no major capital works undertaken by the Department during 2009-10.

STAFF PROFILE

	2009-10	2008-09
Full time permanent	36	37
Full time contract	15	10
Part-time measured on an FTE basis	5.2	4.8
On secondment	1	2
	57.2	53.8

The number of staff reported above are snapshots as at 30 June in 2010 and 2009 respectively. During the 2010 period the Department also employed a trainee.

STAFFING POLICIES AND PROCEDURES

The Department's staffing policies have been developed to conform to the current Public Sector Standards and also include a proactive approach to monitoring and working towards meeting our diversity targets. Because of the relatively small staff numbers however this poses difficulties at times as a turnover of only one or two people can have a significant effect on levels of diversity representation. Flexible work options, part-time and job-sharing arrangements are widely accepted as part of a family friendly approach to the work environment. Many staff take up these flexible work options and staff in all areas and at all levels have access to, and use, part-time or purchased leave arrangements. Higher duties and acting opportunities are provided to all staff.

Recruitment

The Department is committed to upholding the Public Sector Standards in Human Resource Management, and all recruitment and selection processes and decisions are reviewed by an independent officer, whether the process is to fill a permanent position, a short term secondment or an acting vacancy. All job advertisements encourage people from diverse backgrounds to apply and promote employee benefits available including flexible working arrangements, salary/remuneration packaging and purchased leave. The Department's recruitment and selection practices are designed to meet the requirement of the Public Sector Standards in Human Resource Management and enable both organisational requirements and employee interests to be met.

Our recruitment process has been adapted to coincide with the ETSSC newly implemented Candidate Management System (CMS). Senior staff were offered the opportunity to attend the CMS training sessions to prepare them for future advertised vacancies. A substantial number of staff have completed a recruitment and selection panel member training course in order to maintain integrity in our processes.

The Department is currently participating in the Office of Public Sector Standards Commissioner's trial of the four day breach period.

Staff Development

The Department recognises the importance of improving the skills of its employees through training and development. Some of this training and development is coordinated across the whole public sector and some of it is coordinated by the agency. The Department also provides professional training and development opportunities for staff to promote career and organisational objectives. Although training and development is a shared responsibility between management and staff, staff are encouraged to take responsibility for their own self-development and self-improvement.

The performance management process also provides occasion to identify staff professional development and training opportunities. Staff are encouraged to attend workshops and conferences to stay attuned to issues relevant to its functions. The Department also actively supports staff in gaining postgraduate and other professional qualifications.

Performance Management

A consistent performance management process is used across the department and a monitoring system ensures all employees have performance management in place. The process has recently been revised to encourage discussions on work-life balance, leave liability and a selection of training options.

Grievance Management

The Department is committed to creating a work environment free from all forms of discrimination and harassment and to resolving grievances promptly. The grievance policy is available to all staff at induction and through the Department's intranet. In 2009-10 there were no formal internal grievances.

Public Interest Disclosure

The Department is reviewing and updating its Public Interest Disclosure Policy and strongly supports disclosures being made by staff. All reasonable steps are taken to provide protection to staff who make disclosures from any detrimental action in reprisal for the making of a public interest disclosure. In 2009-10 no public interest disclosures were made.

Industrial Relations

Staff of the Department are all employed under the *Public Sector Management Act 1994* and are covered by the Public Service Award. No industrial disputes were recorded during the reporting period. As part of the induction process, staff are provided with an induction booklet outlining employment entitlements and conditions in accordance to the current Award and General Agreement.

Worker's Compensation

There were two workers compensation claims made in 2009-10, one claim was accepted and this claim resulted in lost time in the reporting period. The Department has an appointed Occupational Safety and Health representative who undertakes regular worksite safety inspections. These inspections include discussions with staff on matters relating to their specific work environment and several modifications have been made as a result of these safety checks including the installation of non slip safety strips on the staircases and motion sensor lights at the front of the building. Eye sight screening and testing is openly encouraged throughout the organisation.

Governance Disclosures

CONTRACTS WITH SENIOR OFFICERS

At the date of reporting, other than normal contracts of employment of service, no senior officers, or firms of which senior officers are members, or entities in which senior officers have substantial interests had any interests in existing or proposed contracts with the Department and senior officers.

Other Legal Requirements

COMPLIANCE WITH PUBLIC SECTOR STANDARDS AND ETHICAL CODES

In accordance with Section 31(1) of the *Public Sector Management Act 1994*, the Department has complied with the Public Sector Standards in Human Resource Management, the Western Australian Public Sector Code of Ethics and its own Code of Conduct.

COMPLIANCE ISSUES	SIGNIFICANT ACTION TAKEN TO MONITOR AND ENSURE COMPLIANCE
Public Sector Standards Nil breach claims	<ul style="list-style-type: none">Information about standards is included on the Department's Intranet and in its induction package.Transactions audited internally as a quality assurance process.
WA Public Sector Code of Ethics Nil reports of non compliance.	<ul style="list-style-type: none">The WA Public Sector Code of Ethics is made available to staff on the Department's Intranet.
DES Code of Conduct One occurrence of misconduct was reported.	<ul style="list-style-type: none">DES Code of Conduct is available on the Intranet, hard copies are available upon request and it is included in the induction package.All staff are asked to sign an acknowledgment form confirming their awareness of the Code and of the conduct, standards and behaviour expected of them as employees.

ADVERTISING

In compliance with section 175ZE of the *Electoral Act 1907*, the Department reports that it incurred the following expenditure in relation to advertising, market research, polling, direct mail and media advertising.

Advertising Agencies	
Council for International Students Western Australia	\$600
Market research organisations	Nil
Polling organisations	Nil
Direct mail organisations	Nil
Media advertising organisations	Nil
TOTAL EXPENDITURE FOR 2009-10	\$600

RECORDKEEPING PLAN

During 2009-10 the Department was committed to the implementation of and compliance to the joint recordkeeping plan for the Department of Education Services, the Curriculum Council, the Department of Education, the Department of Training and Workforce Development, TAFEWA colleges and the Public Education Endowment Trust. The following table details compliance with the State Records Commission Standard 2, Principal 6.

STATE RECORDS COMMISSION REQUIREMENT	DEPARTMENT RESPONSE
<i>The efficiency and effectiveness of the organisation's recordkeeping system is evaluated not less than once every 5 years</i>	<p>A baseline audit of efficiency and effectiveness of the agency's recordkeeping system has been undertaken and a document records management system (EDRMS) and Web content management system (WCMS) TRIM Context has been implemented.</p> <p>The system is regularly monitored and reviewed for efficiency and effectiveness and for accuracy of the existing file classification system. Consultation meetings have been undertaken with users to improve compliance. The existing file classifications are currently being reviewed and this work will continue over the next 12 months.</p>
<i>The organisation conducts a recordkeeping training program</i>	<p>TRIM training sessions are provided for all staff. A dedicated "TRIM Help" service is made available by the records management team and hands-on assistance is provided by a group of 'power users'.</p> <p>Records staff continue to develop their own skills through obtaining higher qualifications and attending records management conferences, seminars and training courses including those offered by the TRIM User Group of WA.</p>
<i>The efficiency and effectiveness of the recordkeeping training program is reviewed from time to time</i>	<p>During the reporting period, TRIM training materials and programs were developed to support users.</p> <p>Staff provide feedback on the efficiency and effectiveness of TRIM training sessions - this allows records staff to modify training and to target problem areas.</p>
<i>The organisation's induction program addresses employees' roles and responsibilities with regards to their compliance with the organisation's recordkeeping plan</i>	<p>Training in the use of TRIM and the business classification system is part of the Department's induction program. Training is supported by intranet recordkeeping training materials and PowerPoint presentations.</p> <p>Additional individual support is provided by the records staff as required.</p>

DISABILITY ACCESS AND INCLUSION PLAN OUTCOMES

The Department currently has in place a five-year Disability Access and Inclusion Plan (DAIP) that provides a framework for the identification of access and inclusion barriers and for the development of strategies to address those barriers. The Plan has been developed in accordance with S29 of the *Disability Services Act 1993*, and is reviewed annually. Progress towards implementing the six desired outcomes identified in the DAIP is provided in the following table.

DAIP DESIRED OUTCOME	DEPARTMENT RESPONSE
Outcome 1: <i>People with disabilities have the same opportunities as other people to access the services of, and any events organised by, a public authority.</i>	<ul style="list-style-type: none"> Inclusion of an events checklist and other relevant information on the Intranet to assist staff with planning accessible events. Disability Standards for Education included in guidelines for non-government schools registration process.
Outcome 2: <i>People with disabilities have the same opportunities as other people to access the buildings and other facilities of a public authority.</i>	<ul style="list-style-type: none"> Following the redesign of the ground floor toilet to make it fully accessible, the Department is now looking at the feasibility of installing a 'push button' self opening door. Well marked accessible parking bay at the front of the building; customer service staff monitor parking arrangements.
Outcome 3: <i>People with disabilities receive information from a public authority in a format that will enable them to access the information, as readily as other people are able to access it.</i>	<ul style="list-style-type: none"> Inclusion of notation on public documents that they can be made available in alternative formats upon request. DES website currently being upgraded - improvements will comply with Access Guidelines. <i>State Government Access Guidelines for Information, Services and Facilities</i> posted on Intranet for staff reference.
Outcome 4: <i>People with disabilities receive the same level and quality of service from the staff of a public authority as other people receive from staff of that public authority.</i>	<ul style="list-style-type: none"> Reference to disability services implementation plan included in staff induction package. Performance management process includes commitment to staff awareness of the implementation plan.
Outcome 5: <i>People with disabilities have the same opportunities to make complaints to a public authority.</i>	<ul style="list-style-type: none"> Complaints and grievance policies updated to ensure they are accessible for people with disabilities. DES Website provides avenue to submit written complaints.
Outcome 6: <i>People with disabilities have the same opportunities to participate in any public consultation by a public authority.</i>	<ul style="list-style-type: none"> DAIP posted on DES Website inviting feedback. Commitment to continual monitoring.

Government Policy Requirements

OCCUPATIONAL SAFETY, HEALTH AND INJURY MANAGEMENT

The Department complies with the requirements of the *Occupational Safety and Health Act 1984* and is committed to providing and maintaining a healthy and safe working environment for all staff, contractors and visitors. The Department undertakes an annual building evacuation exercise and provides adequately stocked first aid kits in easily accessible locations. There are several officers trained in senior first aid and one officer receives a special 'first aid allowance'. In December 2009 ten staff members participated in and successfully passed a St John Ambulance 'First Responder' training course. This course provides training in dealing with sudden cardiac arrest including basic life support techniques and knowledge on how to administer oxygen and how to use a semi-automatic heart defibrillator (the Department owns an emergency OxyPort cylinder and a heart-start defibrillator kit). An employee assistance program is also available to all staff.

The Department has appointed an Occupational Safety and Health representative who undertakes regular worksite safety inspections. These inspections include discussions with staff on matters relating to their specific work environment and several modifications have been made as a result of these safety checks. A self evaluation of the occupational safety and health management practices will be included in an internal functional review process.

The Department's Injury Management and Workers Compensation policy and procedures, including its return to work policy, are readily available to all staff on the Intranet and are included in the staff induction package. The Department is committed to providing injury management support to all its employees and in the event of a work related injury or illness, will provide assistance as soon as practicable to facilitate a return to work in accordance with the *Workers' Compensation and Injury Management Act 1981*. Occupational safety, health and injury management responsibilities for the Department are handled by the Education and Training Shared Services Centre (ETSSC).

The Department provides the following information on its performance in relation to the number of injuries and fatalities.

INDICATOR	Target 2009-10	Actual 2009-10
Number of fatalities	0	0
Lost time injury/diseases (LTI/D) rate	0	1.8%
Lost time injury severity rate	0	0
Return to work (RTW) rate (within 28 weeks)	100%	100%
Percentage of Managers trained in OSH and injury management responsibilities	n/a*	n/a*

* Occupational safety, health and injury management responsibilities for the Department are handled by ETSSC.

APPENDICES

1 Publications

Non-Government Schools of Western Australia, A Guide for Parents 2010, February 2010

Review of the Western Australian College of Teaching Act 2004: Discussion Paper, February 2009

Training Accreditation Council Update *Newsletter*, published on a regular basis and circulated via email

Training Accreditation Council *Annual Report 2008-2009*, September 2009

Training Accreditation Council *VET Vital Statistics* December 2009 and June 2010

Western Australian Aboriginal Education and Training Council, *Annual Implementation Report 2008*

Western Australian Aboriginal Education and Training Council *Newsletter*, Vol 27, December 2009

Western Australian Aboriginal Education and Training Council : School and Community Partnership Agreements (pamphlet)

Western Australian Aboriginal Education and Training Council (WAAETC) Strategic Plan 2009

Western Australian Aboriginal Education and Training Council: Test Literacy Strategies for Parents: Helping Your Child To Do Well At School (pamphlet)

2 Statistics

Table 1: Western Australian University Statistics – 2008*

	Curtin	ECU	Murdoch	UWA	UNDA	Total
Student Enrolment						
Total Students	40,833	24,201	16,615	19,993	7,062	108,704
Commencing Students	15,401	10,892	6,235	6,868	2,872	42,268
Female Students	21,856	14,382	9,986	10,208	4,921	61,353
Male Students	18,977	9,819	6,629	9,785	2,141	47,351
Full-Time Students	28,434	15,374	11,200	15,944	5,483	76,435
Part-Time Students	12,399	8,827	5,415	4,049	1,579	32,269
External Students [#]	3,406	3,379	2,462	53	43	9,343
Aboriginal Students	488	164	184	149	42	1,027
Overseas Students	16,646	6,180	4,429	4,521	546	32,322
Higher Degree Students	6,786	3,962	1,778	3,889	484	16,899
Student Load						
Total Load	28,441	15,545	11,766	16,369	5,535	77,656
Domestic Load	16,408	11,474	8,229	12,851	5,158	54,120
Overseas Load (in Aust)	7,002	2,445	1,678	2,680	378	14,183
Load by Level of Course (in Aust)						
- Doctorate	902	292	595	1,317	24	3,130
- Masters	2,494	1,139	524	1,062	184	5,403
- Postgraduate	1,033	943	580	482	107	3,145
- Bachelors	18,193	10,930	8,052	12,494	4,887	54,556
- Other	788	610	228	171	335	2,132
- Total	23,410	13,914	9,979	15,526	5,537	68,366

* Latest figures available.

not independent of FT and PT

Table 2: Accredited and/or Registered Non Self-Accrediting Higher Education Institutions and Awards - June 2010

Provider	Post Graduate	Graduate Dip/Cert	Bachelor	Associate Degree	Adv Dip/ Diploma	Total
Australian College of Ministries	1	2	1		1	5
Australian School of Tourism & Hotel Management		1	2			3
Canning College					1	1
Challenger TAFE				5		5
Chartered Secretaries Australia		1				1
Curtin International College					9	9
Endeavour College of Natural Health			4			4
Harvest West Bible College		1	2			3
Institute of Chartered Accountants in Australia		1				1
Kaplan Professional	1	2				3
Montessori World Educational Institute		1			1	2
Murdoch Institute of Technology					5	5
Paramount College of Natural Medicine			5			5
Perth Bible College		1	1		2	4
Perth Institute of Business and Technology					8	8
Polytechnic West				5		5
SAE Institute			2		2	4
Tabor College Perth		6	3			9
The College of Law	1	4				5
Trinity Theological College	3	2	4	1		10
Vose Seminary	5	4	5	1		15
	11	26	29	12	29	107

Table 3: Number of Non-Government Schools - August 2009

	Number
Pre-Compulsory Schools	9
Primary Schools	
Primary only	1
Pre-Compulsory and Primary	156
Primary/Secondary Schools	
Primary and Lower Secondary	1
Pre-Compulsory, Primary and Lower Secondary	26
Primary, Lower and Upper Secondary	22
Pre-Compulsory, Primary, Lower and Upper Secondary	64
Secondary Schools	
Lower Secondary only	4
Lower and Upper Secondary	22
Upper Secondary only	6
Total	311

Table 4: Number of Non-Government School Students - August 2009

	Number of Schools	Kindergarten and Pre-Primary Students	Primary Students	Lower Secondary Students	Upper Secondary Students	Total Secondary Students	Total Students
Non-Government Schools							
Pre-Compulsory	9	379					379
Primary	157	10487	30305				40792
Primary/Secondary	113	5975	26143	28070	15225	43295	75413
Secondary	332			9536	5341	14877	14877
Total Non-Government	311	16841	56448	37606	20566	58172	131461*
%	27.8	29.4	29.9	42.0	41.2	41.7	34.1
Government Schools	771	39204	132053	51826	29408	81324	252491
Community Pre-Schools	35	1282					1282
Total	1117	57327	188501	89432	49974	139406	385234

* The total number of students may vary from the number of students for whom per capita grants were paid as the student census is based on the number of students whereas the per capita grants are paid according to full time establishment [FTE]. Therefore students, particularly in Kindergarten and Pre-Primary who do not attend full-time or are ineligible because of age e.g. students younger than 4 years old, and students enrolled at independent profit-making pre-compulsory centres are not included when calculating per capita payments.

Table 5: Number of Non-Government Schools and Students by Religious Affiliation of School - August 2009

Religious Affiliation	Number of Schools	%	Number of Students	%
Anglican	18	5.8	18718	14.2
Baptist	12	3.9	7300	5.6
Catholic	157	50.5	70349	53.5
Seventh Day Adventist	7	2.3	724	0.6
Uniting Church	7	2.3	9508	7.2
Other Religions	50	16.1	18547	14.1
Total Religious Schools	251	80.7	125146	95.2
No Religious Affiliation	51	16.4	5936	4.5
Pre-Compulsory	9	2.9	379	0.3
Total	311	100.0	131461	100.0

Table 6: Number of Registered Providers of Education Services to Full Fee Overseas Students - June 2010

Provider	Number
Statutory Providers	
Public universities*	5
Private universities	1
TAFE International	1
Government senior colleges	2
Department of Education	1
Non-Government Schools	57
Private Non-Statutory Providers	64
Total Registered Providers during 2009-10	131
Registrations Relinquished/Cancelled during 2009-10	14
Total Registered Providers as at June 2010	117

* includes registration of non-Western Australian Universities.

**Table 7: Number of Registered Training Organisations and Accredited Courses
- June 2010**

Registered Training Organisations (RTOs)	Number
Total RTOs with intended WA delivery	1728
WA RTOs	547
Regional WA RTOs	92
Interstate RTOs	1181
WA RTOs delivering overseas	66
WA RTOs deregistered	1
Accreditation of Courses	
Total accredited courses	297

3 Non-Government Schools – Registration Activity in 2009-10

New Schools

Caversham Training and Enterprise Centre
Holy Cross College (Ellenbrook)

Additional or Change in Level(s)

Bunbury John Calvin School (K-Y7 formerly PP-Y7)
Goldfields Baptist College (K-Y12, formerly K-Y10)
Hillside Christian School (Y8-Y10, formerly K-Y7)
Langford Islamic College (K-Y12, formerly K-Y11)
Serpentine-Jarrahdale Grammar School (Y7-Y12, formerly Y8-Y12)
Woodthorpe School (Willetton) (Y3-Y12, formerly Y4-Y12)

Voluntarily Closed Campus

Holy Name School (Carlisle) (amalgamated with Notre Dame Catholic Primary School Cloverdale)
Midland Christian School (Middle Swan) (Amalgamated with Swan Christian College)
Parkwood Kindergarten (Parkwood)

Change of Name

Australian Trades College (WA) (formerly Australian Technical College Perth South)
Caversham Training and Education Centre (formerly Caversham Training and Enterprise Centre)
Pindan College (formerly Australian Technical College Pilbara)

Change of Location

Alta-1 (Additional site Mullaloo)
Damla College (Relocated to Ferndale)
Sowilo Community High School (Relocated to Kelmscott)

Registration Renewed

(Independent Non-Government Schools)

Alta-1 (Landsdale, Malaga, Canning Vale, Joondalup, Mullaloo)
Australian Islamic College (Kewdale)
Australian Islamic College (North of River)
Australian Islamic College (Perth)
Australian Trades College (WA) (Maddington)
Australind Christian School
Banksia Montessori School (Dianella)
Bethel Christian School (Albany)
Bold Park Community School (Wembley)
Bunbury John Calvin School
Carmel Adventist College Primary School
Carnarvon Christian School
Catalyst Schools (Merriwa)
Child Side School (Boyanup)
Christ Church Grammar School (Claremont)
Chrysalis Montessori School (Glendalough)
Conon Road Kindergarten (Applecross)
Corridors College (Midland)
Culunga Aboriginal Community School (West Swan)
Damla College (Ferndale)
First Steps Independent Kindergarten (Kardinya)
Frederick Irwin Anglican School (Mandurah)
Georgiana Molloy Anglican School (Yalyalup)
Golden Hill Steiner School (Denmark)
Great Southern Grammar School (Lower Kalgan)
Helena College Junior School (Darlington)
Helena College Senior School (Glen Forrest)
Hensman Street Pre School (South Perth)
Heritage College (Forrestfield)
John Calvin School (Albany)

Karalundi Aboriginal Education Community Inc (via Meekatharra)
Kerry Street Community School (Hamilton Hill)
KIDS Open Learning School (Maylands)
Kingston International College (Perth)
Kingsway Christian College (Darch)
Landsdale Gardens Adventist School
Leaning Tree Community School (Geraldton)
Margaret River Independent School
Midland Christian
Moerlina School (Mt Claremont)
New Life Christian College (Hamilton Hill)
Nollamara Christian Academy
Nyikina Mangala Community School (via Derby)
Ocean Forest Lutheran College (Dalyellup)
Ongerup Kingergarten
Parklands School (Albany)
Parnngurr Community School (via Newman)
Perth Waldorf School (Bibra Lake)
Peter Carnley Anglican Community School (Wellard)
Pindan College (South Hedland)
Port School (Hamilton Hill)
Purnululu Aboriginal Community Independent School (via Kununurra)
RAWA Community School (via Newman)
Regent College (Victoria Park)
Riverlands School (West Swan)
Rockingham John Calvin
Southlands Christian College (Albany)
Sowilo Community School (Kelmscott)
Spirit of Play Community School (Denmark)
St Hilda's Anglican School for Girls (Mosman Park)
Strelley Community School (via Port Hedland)
St Stephen's School (Duncraig and Carramar)
St Mark's Anglican Community School (Hillarys)
Swan Christian College (Middle Swan)
Swan Valley Anglican Community School (Ellenbrook)
The Japanese School in Perth (City Beach)
The Quintilian School (Mt Claremont)
The Silver Tree Steiner School (Parkerville)
Wulungarra Community School (via Fitzroy Crossing)
Yakanarra Community School (via Fitzroy Crossing)
Yallingup Steiner School

Catholic Schools Audited in terms of System Agreement (2009 Calendar Year)

Assumption Catholic Primary School (Mandurah)
Bunbury Catholic College
Dawesville Catholic Primary School
Kearnan College (Manjimup)
Leschenault Catholic Primary School (Australind)
MacKillop Catholic College (Busselton)
Mandurah Catholic College
Our Lady of Lourdes School (Dardanup)
Our Lady of the Cape Primary School (Dunsborough)
Our Lady Star of the Sea Catholic Primary School (Esperance)
St Anne's School (Harvey)
St Bernard's School (Kojonup)
St Brigid's School (Bridgetown)
St Brigid's School (Collie)
St Joseph's Catholic Primary School (Pinjarra)
St Joseph's College (Albany)
St Joseph's Primary School (Bunbury)
St Joseph's School (Busselton)
St Joseph's School (Pemberton)
St Joseph's School (Waroona)
St Mary's Catholic Primary School (Bunbury)

St Mary's Catholic School (Boyup Brook)
 St Mary's School (Merredin)
 St Mary's School (Donnybrook)
 St Matthew's School (Narrogin)
 St Michael's School (Brunswick Junction)

St Patrick's School (Katanning)
 St Thomas More Catholic Primary School (Margaret River)

4 Community Based Courses - Registration Activity in 2009-10

Courses Endorsed

Kununurra Indigenous Girls Program
 Youth Connections (Rockingham)

Course Endorsements Extended

Certificate in General Education for Adults (Kenwick)
 Community Outreach Model for Education and Training (COMET) (Joondalup)
 Education, Employment and Training Program (Parkerville)
 Fresh Learning for Youth (FLY) (Northam/Moora)
 The Workskills Training Program (Mirrabooka)

Course Endorsements Revoked

Caversham Training and Enterprise Centre (Midland/Caversham)
 Connections (Kununurra)
 Connections (Rockingham)
 Connections Program Region 48 (Perth)
 Connections Program Region 49 (Perth)
 Finding My Way (Mirrabooka)

5 Non Self-Accrediting Higher Education Institutions - Registration Activity in 2009-10

New Registration/Re-Registration

Australian College of Theology
 Chartered Secretaries Australia
 College of Law Pty Ltd
 Endeavour College of Natural Health
 Harvest West Bible College
 Kaplan Higher Education Pty Ltd
 Montessori World Educational Institute

Paramount College of Natural Medicine
 Perth Institute of Business and Technology

Non-Approval of Registration

Engineering Institute of Technology

6 Providers of Education Services to Full Fee International Students - Registration Activity in 2009-10

New Registrations

Atherley's School of English
 Flowers Design School (HJ Endall)
 Great Southern Grammar
 Kaplan Higher Education
 Paradise College of Ministries
 Western Australian Institute of Further Studies
 XLT Industrial Training

Re-Registrations

Curtin University of Technology
 Edith Cowan University
 EF International Language School
 Flowers Design School
 Guildford Grammar School
 Lake Joondalup Baptist College
 Murdoch University
 St Marks International College
 Sterling Business College
 University of Notre Dame

7 Training Organisations - Registration Activity in 2009-10

Initial Registrations

ACE Health and Safety Specialists Pty Ltd
 Adam Ray Green
 Alice Helen Clark
 Arthur Savell
 Australian Global Training Pty Ltd
 Australian Mine Rescue Consultants Pty Ltd
 Australian Mines and Metals Association Incorporated
 Australian Workforce Training Pty Ltd
 Australis Institute of Business and Technology Pty Ltd
 Boyup Brook Telecentre Inc
 Bridging the Gap Inc
 Brookwood Enterprises Pty Ltd
 Children's Services Support Unit WA (inc)
 City of Swan Aged Persons Homes Trust Inc
 CMT Holdings Pty Ltd
 Complete First Aid and Driver Training
 Consilium Consulting Pty Ltd
 Debbie Lee Payne
 DKMMP Investments
 Education IT Solutions Pty Ltd
 Energy Skills International Pty Ltd
 EnerMech Pty Ltd
 Equanimity Consultants Pty Ltd
 ERBEAC Inc
 G.M. Lake & M.T Toldo
 Ging Mo Institute Australia Pty Ltd
 HJ Endall Holdings Pty Ltd
 IN2 Directions Pty Ltd
 Integral Development Associates Pty Ltd
 JDDGP Pty Ltd
 Jeremy Edward Gittens
 Jessica Lauren Pitt
 Joondalup Youth Support Services
 JR Leggo Inspection Services Pty Ltd.
 Karnam and Dangol Pty Ltd
 KG Training and Assessing Pty Ltd
 King Eeducational Service Pty Ltd
 Kirana Training Pty Ltd
 Livingston Institute of Vocational Training PTY LTD
 Marra Worra Worra Aboriginal Corporation
 Modal Holdings Pty Ltd
 Mr Aldo Gurgone
 NewMindscape International Pty Ltd
 Ocean and Earth Training Specialists Pty Ltd
 Path Transit Pty Ltd
 Public Sector Training Solutions Pty Ltd
 Railtrain Pty Ltd
 Rotorwest Pty Ltd
 Shaun Bradley Williams Silver Trowel Trade Training Pty Ltd
 SIMA Polytechnic

Speedaware Pty Ltd
 Success Training Company Pty Ltd
 Tabor College Inc (WA)
 Test & Training Australia Pty Ltd ATF The Wanner Family Trust
 The Linmar Group Pty Ltd
 Training For Me Pty Ltd
 Tree Management Institute Pty Ltd
 Vision Equity Training Group Pty Ltd
 West Australian Institute of Further Studies Pty Ltd
 Western Australia Technical Training Institute Pty Ltd
 Wila Gutharra Inc
 Wirraka Maya Health Service Aboriginal Corporation
 World College Pty Ltd

Renewal of Registrations

AAMC Training Group Pty Ltd
 Adam Voak
 Agenda Communication Pty Ltd
 Asstock Pty Ltd, Shoreside Holdings Pty Ltd and Westcolt Pty Ltd
 Australian Industry Training Providers Pty Ltd (AITP)
 Bega Garribirringu Aboriginal Corporation
 Bible College of Western Australia Inc
 Brightwater Care Group (Inc)
 Cape Australia Holdings Pty Limited
 Christopher B Hopkins
 Coastal and Rural Training Pty Ltd
 Coastal Enterprises (WA) Pty Ltd
 Community and Youth Training Services Inc
 Community First Inc
 CPB Group Pty Ltd
 David Wallis
 Department of Corrective Services
 Dillon Whitelaw and Associates Pty Ltd
 Dr John Platt
 E Electrical Designs Pty Ltd
 ENESAR Pty Ltd
 ETAS (WA) Pty Ltd
 Fire and Emergency Services Authority of Western Australia
 Forest Heritage Centre Inc
 Health Training Australia (Inc)
 HJ and MA Bosustow
 Holyoake The Australian Institute for Alcohol and Drug Addiction Resolution Inc
 Image Power Australia Pty Ltd
 JS and AF Berger
 K.L Burns and A.P Rowden
 Kentech Services Pty
 Motor Trade Association of WA Inc
 National Corporate Training Pty Ltd
 Paragon Visual Education Pty Ltd
 PEP Community Services
 Perth Hospitality Professionals Pty Ltd

Petya Pty Ltd
 Polymer Fusion Education Pty Ltd
 Polytechnic West
 Progressive Training (WA) Pty Ltd
 Radcliffe Holdings Pty Ltd
 Retail Skills Centre WA Inc
 Skillquest Training Solutions Pty Ltd
 Swan Taxis Limited
 Technology Transfer International (Australia) Pty Ltd
 The Family Planning Association of Western
 Australia (Inc)

The Federation of Western Australian Police and
 Community Youth Centres Inc.
 The Gowrie (WA) Inc.
 TNL Consultants Pty Ltd
 Transport Forum WA Incorporated
 WA Fork Truck Distributors Pty Ltd
 WA Hotels and Hospitality Association Incorporated
 (Union of Employers)
 WA Skills Training Pty Ltd
 Wellparks Holdings Pty Ltd

8 Non-Government School Per-Capita Grants – 2009 and 2010 Rates

State Needs-Based School Funding Category	Kindergarten (4 sessions) 2009 \$	Kindergarten (4 sessions) 2010 \$	Pre-Primary & Primary 2009 \$	Pre-Primary & Primary 2010 \$	Secondary 2009 \$	Secondary 2010 \$
A	1,805	1,978	1,204	1,319	1,827	2,002
B	2,080	2,279	1,386	1,518	2,247	2,461
C	2,089	2,288	1,392	1,525	2,302	2,522
D	2,154	2,360	1,436	1,574	2,370	2,596
E	2,260	2,476	1,507	1,651	2,473	2,709
F	2,357	2,582	1,570	1,720	2,554	2,798
G	2,431	2,664	1,621	1,776	2,646	2,899
H	3,623	4,882	2,415	3,254	3,940	5,309
I	4,818	5,279	3,213	3,520	5,172	5,666

9 General and Special Education Per-Capita Grants Paid to Non-Government Schools in 2009-10

In November 2004, the then Minister for Education and Training wrote to all non-government schools, the Catholic Education Office and the Association of Independent Schools of WA to advise that public funding allocated to non-government schools as general and special education per capita grants would be fully disclosed in the Department's Annual Report.

School	Suburb	State Funding Category	Average Kindergarten FTE Enrolment	Average Pre-Primary FTE Enrolment	Average Primary FTE Enrolment	Average Secondary FTE Enrolment	Total Payments in 2009-10 \$
Non-Systemic Schools							
Al-Hidayah Islamic School	Bentley	F	0	28	198	0	436,022
All Saints' College	Bull Creek	A	48	48	407	654	1,985,471
ALTA-1	Landsdale	H	0	0	0	144	590,184
Australian Christian College - Southlands	Albany	G	7	21	227	154	895,950
Australian Islamic College (Kewdale)	Kewdale	G	49	71	428	561	2,562,100
Australian Islamic College (North of the River)	Dianella	F	50	60	533	85	1,349,636
Australian Islamic College (Perth)	Thornlie	F	47	56	393	60	1,012,696
Australian Trades College (WA)	Maddington	F	0	0	0	193	529,068
Australind Christian School	Australind	E	2	5	17	0	39,147
Banksia Montessori School	Dianella	D	8	6	0	0	31,534
Bethel Christian School	Albany	E	27	33	183	72	598,691
Bible Baptist Christian Academy	Mount Helena	F	0	0	18	11	58,536
Blue Gum Montessori School	Bibra Lake	D	29	37	54	0	204,013
Bold Park Community School	Wembley	D	44	24	80	11	297,376
Bunbury Cathedral Grammar School	Gelorup	C	24	27	308	568	1,769,266
Bunbury John Calvin School	Picton	F	0	1	61	0	101,879
Byford John Calvin School	Byford	F	7	12	134	0	328,985
Carey Baptist College	Harrisdale	E	40	47	433	639	2,568,270
Carmel School	Dianella	D	34	41	280	191	1,068,515
Camarvon Christian School	Camarvon	F	10	6	48	0	116,385
Casa Mia Montessori Community School	Bassendean	F	9	11	18	0	72,710
Catalyst Schools	Mindarie	H	0	0	0	59	262,645
Caversham Training and Education Centre	Midland	H	0	0	0	41	108,835
Child Side School	Boyanup	E	6	3	30	0	66,984
Christ Church Grammar School	Claremont	A	0	39	512	885	2,690,764
Christian Aboriginal Parent-Directed School	Coolgardie	G	3	5	40	110	387,504
Christian Aboriginal Parent-Directed School Kurrawang	Kurrawang	G	2	3	28	0	55,720
Chrysalis Montessori School	Glendalough	D	22	29	75	0	212,377
Coolabaroo Neighbourhood Centre	Thornlie	D	10	2	0	0	26,190
Comerstone Christian College	Busselton	F	14	21	184	131	739,448
Corridors College	Midland	H	0	0	0	102	364,313
Culunga Aboriginal Community School	West Swan	G	3	3	30	0	90,944
Dale Christian School	Armadale	F	25	27	178	75	615,773
Damia College	Ferndale	F	11	18	87	18	246,733
Divine Mercy College	Yangebup	G	0	11	85	58	336,967
Emmanuel Christian Community School	Girrawheen	F	25	27	199	0	472,240
First Steps Independent Kindergarten	Kardinya	D	1	0	0	0	1,719
Foundation Christian College	Greenfields	F	29	23	246	149	949,269
Geraldton Grammar School	Geraldton	D	23	43	280	282	1,269,705
Golden Hill Steiner School	Denmark	E	8	8	49	0	106,479
Goldfields Baptist College	O'Connor	D	19	19	178	156	728,841
Grace Christian School	Glen Iris	F	24	26	216	159	878,597
Great Southern Grammar School	Lower Kalgan	D	24	22	230	383	1,418,632
Guildford Grammar School	Guildford	C	40	45	409	611	2,259,827
Gumnut Montessori School	Mt Claremont	D	4	2	0	0	11,203
Hale School	Wembley Downs	A	0	0	388	966	2,341,261
Helena College Junior School	Darlington	D	20	25	177	0	351,608
Helena College Senior School	Glen Forrest	D	0	0	73	421	1,189,969
Heritage College Perth	Forrestfield	F	6	8	40	32	196,184
HillSide Christian School	Forrestfield	E	27	28	161	9	411,604
Hope Christian College	Roelands	G	5	7	78	60	321,965
International School of Western Australia	City Beach	A	0	0	72	50	185,912
John Calvin Christian College	Armadale	F	0	0	51	278	879,504
John Calvin School	Albany	E	0	9	147	65	475,023
Karalundi Aboriginal Education Centre	Via Meekatharra	I	1	0	38	29	286,454
Keimscott John Calvin School	Champion Lakes	F	16	17	150	0	320,101
Kerry Street Community School	Hamilton Hill	F	7	7	20	0	60,450
KIDS Open Learning School	Maylands	E	0	1	28	23	127,204
Kingsway Christian College	Darch	F	66	63	464	490	2,425,887
Kulkariya Community School	Via Fitzroy C'sing	I	9	10	51	15	334,040
Kwinana Christian School	Calista	F	15	17	84	0	209,565
Lake Joondalup Baptist College	Joondalup	E	29	42	328	826	2,831,310
Lance Holt School	Fremantle	E	13	14	81	0	187,355
Langford Islamic College	Langford	F	19	42	172	62	563,766
Leaning Tree Community School	Geraldton	F	7	6	29	0	73,443
Living Waters Lutheran College	Warnbro	F	56	66	574	498	2,568,678
Mandurah Baptist College	Lakelands	F	40	52	406	556	2,367,376
Maranatha Christian College	Waikiki	E	61	54	404	238	1,557,687
Margaret River Independent School	Forest Grove	F	12	13	58	0	144,390

School	Suburb	State Funding Category	Average Kindergarten FTE Enrolment	Average Pre-Primary FTE Enrolment	Average Primary FTE Enrolment	Average Secondary FTE Enrolment	Total Payments in 2009-10 \$
Margaret River Montessori School	Margaret River	E	18	18	58	0	161,595
Methodist Ladies' College	Claremont	A	20	36	347	619	1,795,015
Moerlina School	Mt Claremont	D	13	9	46	0	115,933
Murdoch College	Murdoch	D	0	0	30	275	725,046
New Life Christian College	Hamilton Hill	E	14	13	78	0	214,881
Nollamara Christian Academy	Nollamara	D	0	0	14	19	66,368
Nyikina Mangala Community School	Via Derby	I	4	3	13	7	107,509
Ocean Forest Lutheran College	Dalyellup	E	39	42	254	229	1,171,571
Ongerup Kindergarten	Ongerup	D	5	0	0	0	11,594
Parklands School	Albany	F	20	21	57	0	179,527
Parrngurr Community School	Via Newman	I	3	3	25	18	209,220
Penrhos College	Como	A	15	28	364	748	1,957,051
Perron Early Learning Centre	Victoria Park	D	4	0	0	0	9,029
Perth College	Mount Lawley	A	27	26	300	730	1,870,592
Perth Montessori School	Burswood	D	21	26	105	11	269,400
Perth Waldorf School	Bibra Lake	E	7	29	184	86	576,012
Pindan College	South Hedland	F	0	0	0	64	169,806
Pioneer Village School	Armadale	F	48	47	162	0	464,455
Port School	Hamilton Hill	H	0	0	0	65	286,698
Presbyterian Ladies' College	Peppermint Grove	A	39	34	369	737	2,011,197
Purnululu Aboriginal Community Independent School	Via Kununurra	I	1	4	18	2	88,573
Quinns Baptist College	Mindarie	E	40	52	432	413	1,967,239
Rawa Community School	Via Newman	I	4	5	42	25	307,718
Regent College	Victoria Park	E	28	38	185	0	450,017
Rehoboth Christian College	Kenwick	F	38	33	247	184	1,111,891
Riverlands School	West Swan	D	17	25	57	0	169,727
Rockingham John Calvin School	Baldivis	F	9	7	73	0	167,009
Rockingham Montessori School	Rockingham	F	15	19	27	0	111,289
Scotch College	Swanbourne	A	0	0	403	837	2,140,850
Serpentine-Jarrahdale Grammar School	Mundijong	F	0	0	42	308	944,077
Somerville Baptist College	Murdoch	D	0	0	0	536	1,326,050
Sowilo Community High School	Wilson	H	0	0	0	48	192,350
Spirit of Play Community School	Denmark	F	10	5	2	0	34,058
St Andrew's Grammar	Dianella	D	33	40	256	188	1,071,968
St Hilda's Anglican School for Girls	Mosman Park	A	43	38	391	595	1,788,114
St Mary's Anglican Girls' School	Karrinyup	A	36	40	307	836	2,114,046
St Stephen's School	Duncraig	F	0	82	953	1,503	5,924,983
Strathalbyn Christian College	Strathalbyn	F	22	13	254	216	1,108,356
Strelley Community School	Via Port Hedland	I	1	5	29	25	252,325
The Beehive Montessori School	Mosman Park	F	33	24	109	7	393,155
The Japanese School in Perth	City Beach	A	0	0	32	1	42,172
The King's College	Wellard	F	18	13	56	51	308,756
The Montessori School	Kingsley	E	13	13	95	42	311,642
The Quintilian School	Mt Claremont	B	35	33	171	0	380,146
The Silver Tree Steiner School	Parkerville	D	2	7	64	0	103,781
Thornlie Christian College	Southern River	E	50	46	315	270	1,428,431
Tranby College	Baldivis	E	50	53	446	476	2,151,278
Treetops Montessori School	Darlington	D	22	15	43	21	203,314
Wesley College	South Perth	A	40	49	486	750	2,251,868
West Coast Steiner School	Nollamara	E	23	25	100	0	256,778
Winthrop Baptist College	Murdoch	D	0	0	0	602	1,493,878
Wongutha Christian Aboriginal Parent-Directed School	Gibson	G	0	0	0	67	186,438
Woodbury Boston Primary School	Kronkup	E	2	6	41	0	84,065
Woodthorpe School	Willetton	E	0	0	142	154	630,362
Wulungarra Community School	Via Fitzroy C'sing	I	3	6	23	0	109,064
Yakanarra Community School	Via Fitzroy C'sing	I	5	6	37	6	198,302
Yallingup Steiner School	Yallingup	F	7	4	53	0	110,061
Yiyili Aboriginal Community School	Via Fitzroy C'sing	I	9	9	38	16	285,142
Total Non-Systemic Schools			2,020	2,427	19,291	22,948	95,900,647
Systemic Schools							
Seventh Day Adventist Schools							
Brookdale Adventist School	Brookdale	F	6	5	20	0	55,421
Carmel Adventist College	Carmel	F	0	0	27	212	609,780
Carmel Adventist College Primary School	Bickley	F	10	12	116	0	234,592
Esperance Christian Primary School	Esperance	F	11	10	65	0	151,382
Landsdale Gardens Adventist School	Landsdale	F	13	15	52	0	146,488
Riverside Community School	Victoria Park	F	7	8	70	0	147,319
Total Seventh Day Adventist Schools			47	49	347	212	1,344,982
Swan Christian Education Association							
Armadale Christian College	Bedfordale	F	24	24	144	210	927,846
Beechboro Christian School	Beechboro	F	27	25	124	0	337,091
Ellenbrook Christian College	Ellenbrook	F	47	52	407	345	1,856,173
Kalamunda Christian School	Walliston	F	36	39	180	0	471,966
Midland Christian School	Middle Swan	F	25	24	196	0	633,742
Mundaring Christian College	Mundaring	F	22	24	219	120	795,413
Swan Christian College	Middle Swan	F	24	24	199	905	2,976,631
Total Swan Christian Education Association			204	211	1,467	1,579	7,998,861

School	Suburb	State Funding Category	Average Kindergarten FTE Enrolment	Average Pre-Primary FTE Enrolment	Average Primary FTE Enrolment	Average Secondary FTE Enrolment	Total Payments in 2009-10 \$
Anglican Schools Commission							
Esperance Anglican Community School	Esperance	F	0	0	0	27	70,977
Frederick Irwin Anglican School	Mandurah	F	50	64	447	832	3,235,289
Georgiana Molloy Anglican School	Yalyalup	F	32	51	393	353	1,773,390
John Septimus Roe Anglican Community School	Mirrabeeka	F	99	114	893	868	4,382,705
John Wollaston Anglican Community School	Kelmscott	F	46	51	404	497	2,297,018
Peter Carnley Anglican Community School	Wellard	F	48	48	319	139	1,110,260
Peter Moyes Anglican Community School	Mindarie	F	50	54	561	617	2,807,865
St Mark's Anglican Community School	Hillarys	F	50	60	587	817	3,484,084
Swan Valley Anglican Community School	Ellenbrook	F	50	69	433	176	1,441,556
Total Anglican Schools Commission			423	511	4,036	4,325	20,603,145
Catholic Schools							
Aquinas College	Salter Point	F	0	0	287	859	2,797,732
Aranmore Catholic College	Leederville	F	0	0	49	519	1,486,247
Aranmore Catholic Primary School	Leederville	F	54	56	329	0	789,112
Assumption Catholic Primary School	Mandurah	F	57	57	413	0	1,004,983
Banksia Grove Catholic Primary School	Banksia Grove	F	24	24	122	0	318,372
Birrir Ngawiywu Catholic School	Via Halls Creek	I	5	7	33	0	199,813
Brighton Catholic Primary School	Butler	F	41	46	209	0	541,683
Bunbury Catholic College	Bunbury	F	0	0	0	968	2,739,630
Catholic Agricultural College	Bindoon	J	0	0	0	0	0*
Chisholm Catholic College	Bedford	F	0	0	255	1,420	4,314,481
Christ the King School	Beaconsfield	F	51	51	317	0	852,110
Christian Brothers' College	Fremantle	F	0	0	95	616	1,849,560
Christian Brothers Agricultural School	Tardun	J	0	0	0	0	0*
Ciontarl Aboriginal College	Waterford	H	0	0	1	140	720,725
Corpus Christi College	Bateman	F	0	0	152	1,007	3,292,867
Currambine Catholic Primary School	Currambine	F	54	57	394	0	946,794
Dawesville Catholic Primary School	Dawesville	F	56	45	271	0	679,505
Djarindjin Lombadina Catholic School	Lombadina	I	9	11	64	15	408,999
Emmanuel Catholic College	Success	F	0	0	122	696	2,136,474
Good Shepherd Catholic Primary School	Kelmscott	F	28	32	238	0	562,471
Good Shepherd Catholic School	Lockridge	F	58	57	364	0	858,354
Holy Cross College	Ellenbrook	F	0	0	26	9	68,503
Holy Name School	Carlisle	F	9	9	66	0	234,465
Holy Rosary School	Doubleview	F	58	59	351	0	1,076,324
Holy Rosary School	Derby	F	23	28	171	0	434,952
Holy Spirit School	City Beach	F	28	30	171	0	404,165
Infant Jesus School	Morley	F	58	60	360	0	876,679
Iona Presentation College	Mosman Park	F	0	0	103	730	2,144,087
Iona Presentation Primary School	Mosman Park	E	39	44	328	0	686,559
Irene McCormack Catholic College	Butler	F	0	0	85	673	2,032,742
John Paul College	Kalgoorlie	F	0	0	0	665	1,854,245
John Pujajangka Piyim School	Via Halls Creek	I	5	2	29	4	191,812
John XXIII College	Claremont	F	48	57	528	873	3,763,343
Kearman College	Manjimup	F	23	24	184	118	730,390
Kolbe Catholic College	Rockingham	F	0	0	157	815	2,570,989
Kururrungku Catholic Education Centre	Via Halls Creek	I	8	6	45	12	300,321
La Salle College	Middle Swan	F	0	0	135	1,123	3,471,401
Leschenault Catholic Primary School	Australind	F	58	56	402	0	927,864
Liwara Catholic Primary School	Greenwood	F	59	59	364	0	860,598
Loreto Nedlands	Nedlands	F	29	30	166	0	394,205
Lumen Christi College	Martin	F	0	0	79	874	2,576,591
Luumpa Catholic School	Via Halls Creek	I	7	9	78	13	501,060
MacKillop Catholic College	Busselton	F	0	0	0	554	1,529,304
Majella Catholic Primary School	Balga	F	25	25	158	0	400,432
Mandurah Catholic College	Mandurah	F	42	30	219	963	3,202,734
Mary MacKillop Catholic Community Primary School	Ballajura	F	84	81	540	0	1,326,349
Mary's Mount Primary School	Gooseberry Hill	F	30	29	193	0	447,406
Mater Christi Catholic Primary School	Yangebup	F	86	84	536	0	1,304,206
Mater Dei College	Edgewater	F	0	0	100	886	2,597,890
Matthew Gibney Catholic Primary School	High Wycombe	F	31	28	178	0	433,895
Mazenod College	Lesmurdie	F	0	0	68	636	1,850,451
Mel Maria Catholic Primary School	Attadale	F	101	106	438	0	1,172,345
Mercedes College	Perth	F	0	0	126	784	2,446,315
Mercy College	Koondoola	F	59	60	509	934	3,711,202
Nagle Catholic College	Geraldton	F	0	0	96	929	2,780,993
Newman College	Churchlands	F	86	88	694	1,026	4,435,923
Ngalangangpum School	Via Kununurra	I	5	12	87	16	560,540
Notre Dame Catholic Primary School	Cloverdale	F	46	42	225	0	596,778
Orana Catholic Primary School	Willetton	F	58	60	343	0	817,514
Our Lady of Fatima School	Palmyra	F	30	28	179	0	423,536
Our Lady of Good Counsel School	Karrinyup	F	30	30	168	0	467,260
Our Lady of Grace School	North Beach	F	57	59	371	0	887,621
Our Lady of Lourdes School	Dardanup	F	19	17	172	0	392,930
Our Lady of Lourdes School	Nollamara	F	28	29	176	0	429,918
Our Lady of Mercy Primary School	Girrawheen	F	50	49	283	0	682,358
Our Lady of Mount Carmel School	Hilton	F	30	30	194	0	451,346
Our Lady of Mount Carmel School	Mullewa	F	8	8	57	0	127,387
Our Lady of the Cape Primary School	Dunsborough	F	29	31	192	0	491,517
Our Lady Star of the Sea Catholic Primary School	Esperance	F	20	19	151	0	334,262
Our Lady's Assumption School	Dianella	F	60	59	344	0	842,121

School	Suburb	State Funding Category	Average Kindergarten FTE Enrolment	Average Pre-Primary FTE Enrolment	Average Primary FTE Enrolment	Average Secondary FTE Enrolment	Total Payments in 2009-10 \$
Padbury Catholic Primary School	Padbury	F	68	60	378	0	948,192
Prendiville Catholic College	Ocean Reef	F	0	0	102	868	2,538,514
Queen of Apostles School	Riverton	F	39	44	305	0	713,285
Sacred Heart Catholic School	Goomalling	F	3	5	41	0	85,733
Sacred Heart College	Sorrento	F	0	0	99	974	2,950,926
Sacred Heart Primary School	Highgate	F	30	31	169	0	417,345
Sacred Heart Primary School	Thornlie	F	60	59	368	0	908,145
Sacred Heart School	Mundaring	F	23	26	169	0	387,988
Sacred Heart School	via Broome	I	13	14	69	11	513,350
Santa Clara School	St James	F	29	28	167	0	404,376
Santa Maria College	Attadale	E	0	0	255	910	2,799,222
Servite College	Tuart Hill	F	0	0	142	816	2,581,630
Seton Catholic College	Samson	F	0	0	94	747	2,309,063
St Andrew's Catholic Primary School	Clarkson	F	57	56	342	0	824,565
St Anne's School	Harvey	F	25	26	182	0	414,692
St Anthony's School	Wanneroo	F	51	55	239	0	648,920
St Anthony's School	Greenmount	F	59	59	371	0	917,798
St Augustine's School	Rivervale	F	28	29	167	0	402,725
St Benedict's School	Applecross	F	30	30	157	0	401,775
St Bernadette's Catholic Primary School	Port Kennedy	F	56	58	349	0	868,519
St Bernard's School	Kojonup	F	13	8	78	0	200,164
St Brigid's College	Lesmurdie	F	58	59	457	713	2,935,117
St Brigid's Primary School	Middle Swan	F	59	57	373	0	958,869
St Brigid's School	Collie	F	24	21	134	0	348,726
St Brigid's School	Bridgetown	F	12	12	101	0	230,181
St Cecilia's Catholic Primary School	Port Hedland	F	30	30	195	0	461,272
St Clare's School	Lathlain	H	0	0	0	32	189,193
St Columba's Catholic Primary School	South Perth	F	39	42	160	0	438,685
St Columba's School	Bayswater	F	30	31	178	0	432,096
St Denis School	Joondanna	F	29	30	170	0	408,593
St Dominic's School	Innaloo	F	30	27	152	0	385,105
St Emilie's Catholic Primary School	Canning Vale	F	57	58	276	0	696,559
St Francis Xavier Primary School	Geraldton	F	55	57	388	0	918,950
St Gerard's Primary School	Westminster	F	26	30	159	0	395,299
St Helena's Catholic Primary School	Ellenbrook	F	66	53	301	0	777,706
St Jerome's Primary School	Munster	F	77	75	518	0	1,210,837
St John's School	Scarborough	F	30	30	168	0	418,064
St John's School	Rangeway	F	29	29	184	0	455,931
St Joseph's Catholic Primary School	Pinjarra	F	22	22	179	0	404,975
St Joseph's College	Albany	F	29	36	246	277	1,345,900
St Joseph's Primary School	Bunbury	F	32	32	208	0	675,380
St Joseph's School	Northam	F	18	17	162	75	775,470
St Joseph's School	Southern Cross	F	15	23	113	0	255,295
St Joseph's School	Pemberton	F	12	20	90	0	187,365
St Joseph's School	Wyndham	F	14	16	88	0	181,180
St Joseph's School	Kununurra	F	35	43	252	0	452,828
St Joseph's School	Queens Park	F	26	35	221	0	673,865
St Joseph's School	Waroona	F	26	22	154	0	330,415
St Joseph's School	Busselton	F	54	54	356	0	844,769
St Joseph's School	Moora	F	38	22	199	68	509,437
St Joseph's School	Boulder	F	34	45	299	0	561,607
St Jude's Catholic School	Langford	F	26	25	163	0	385,923
St Kieran Catholic Primary School	Tuart Hill	F	72	57	364	0	1,079,176
St Lawrence Primary School	Balcatta	F	30	31	170	0	427,157
St Lawrence's Primary School	Geraldton	F	56	55	391	0	909,696
St Luke's Catholic Primary School	Woodvale	F	53	54	389	0	898,499
St Luke's College	Karratha	F	0	0	0	391	1,055,870
St Maria Goretti's Catholic School	Redcliffe	F	29	29	164	0	406,957
St Mary Star of the Sea Catholic School	Camarvon	F	25	30	183	69	620,132
St Mary's Catholic Primary School	Bunbury	F	29	29	202	0	457,470
St Mary's Catholic School	Boyup Brook	F	7	7	53	0	115,226
St Mary's College	Broome	F	44	50	333	188	1,270,035
St Mary's Primary School	Kalgoorlie	F	55	59	375	0	868,144
St Mary's School	Donnybrook	F	13	13	76	0	181,268
St Mary's School	Merredin	F	20	23	106	0	259,008
St Mary's School	Northampton	F	9	9	61	0	155,157
St Matthew's School	Narrogin	F	23	25	164	0	363,045
St Michael's School	Brunswick Junction	F	15	14	113	0	207,346
St Michael's School	Bassendean	F	16	19	124	0	395,996
St Munchin's Catholic School	Gosnells	F	45	48	337	0	777,405
St Norbert College	Queens Park	F	0	0	61	693	2,056,037
St Patrick's Primary School	Fremantle	F	29	29	179	0	431,561
St Patrick's School	Katanning	F	0	20	142	0	312,241
St Paul's Primary School	Karratha	F	45	44	250	0	599,041
St Paul's Primary School	Mount Lawley	F	30	30	167	0	401,961
St Peter's Primary School	Inglewood	F	90	91	437	0	1,152,550
St Pius X Catholic School	Manning	F	30	28	180	0	452,000
St Simon Peter Catholic Primary School	Ocean Reef	F	83	90	585	0	1,546,403
St Thomas More Catholic Primary School	Margaret River	F	29	31	194	0	447,539
St Thomas Primary School	Claremont	F	30	29	177	0	424,023
St Vincent's School	Parmelia	F	42	29	165	0	436,332
Star of the Sea Primary School	Rockingham	F	83	84	492	0	1,175,205
Trinity College	East Perth	F	0	0	333	905	3,043,340
Ursula Frayne Catholic College	Victoria Park	F	60	60	477	595	2,790,395

School	Suburb	State Funding Category	Average Kindergarten FTE Enrolment	Average Pre-Primary FTE Enrolment	Average Primary FTE Enrolment	Average Secondary FTE Enrolment	Total Payments in 2009-10 \$
Wanalirri Catholic School	Via Derby	I	0	2	11	0	43,918
Warlawurru Catholic School	Via Halls Creek	F	7	7	50	0	116,368
Whitford Catholic Primary School	Craigie	F	59	61	379	0	877,985
Xavier Catholic School	Brookdale	F	25	27	150	0	377,391
Yidarra Catholic Primary School	Bateman	F	55	57	368	0	853,996
Total Catholic Schools			4,728	4,815	33,592	27,198	157,214,126
Telethon Speech & Hearing Centre			10	6	26	8	1,653,480
GRAND TOTAL			7,431	8,018	58,758	56,270	284,715,241

* Grants provided to Catholic agricultural colleges are determined and paid by the Catholic Education Office from a State government special needs grant to the Catholic Education Office.

10 Loans Advanced to Non-Government Schools* from the Low Interest Loan Scheme (LILS) in 2009-10

In November 2005, the then Minister for Education and Training wrote to all non-government schools, the Catholic Education Office and the Association of Independent Schools of WA to advise that details of loan amounts and publicly subsidised interest rates on the loans advanced to non-government schools under the Low Interest Loan Scheme (LILS) would be disclosed in the Department's Annual Report.

School	Location	Loan funds advanced in 2009-10 \$	Interest rate # %
Beechboro Christian School	Beechboro	\$712,381.53	3.5
Blue Gum Montessori School	Kardinya	\$760,000.00	3.5
Byford Catholic School	Byford	\$5,000,000.00	1.0
Child Side School	Boyunup	\$12,203.95	3.5
Christian Brothers College	Fremantle	\$1,821,719.10	3.5
Dawesville Catholic Primary Sch	Falcon	\$697,604.82	1.0
Foundation Christian College	Mandurah East	\$500,000.00	3.5
Golden Hill Steiner School	Denmark	\$135,000.00	3.5
Helena College Senior School	Glen Forrest	\$200,000.00	3.5
Holy Cross College	Ellenbrook	\$5,901,324.11	1.0
Irene McCormack Catholic College	Butler	\$9,258.72	1.0
John Septimus Roe Anglican Sch	Mirrabooka	\$2,036,000.00	3.5
Lake Joondalup Baptist College	Joondalup	\$90,649.03	3.5
Lance Holt School	Fremantle	\$47,323.45	3.5
Langford Islamic College	Langford	\$420,000.00	3.5
Margaret River Montessori School	Margaret River	\$146,595.17	3.5
Mel Maria Catholic Prim School	Attadale	\$39,467.39	3.5
Moerlina School	Mt Claremont	\$200,000.00	3.5
Orana Catholic Primary School	Willetton	\$58,211.25	3.5
Peter Carnley Anglican Comm Schl	Wellard	\$396,767.32	1.0
Peter Moyes Anglican School	Mindarie	\$500,000.00	3.5
Quintilian School	Mt Claremont	\$400,000.00	3.5
Serpentine Jarrahdale Grammar Sc	Mundijong	\$1,564,500.00	3.5
St Benedicts School	Applecross	\$202,414.61	3.5
St Josephs School	Queens Park	\$1,270,000.00	3.5
Swan Valley Anglican Community	Aveley	\$1,000,000.00	1.0
The University Of Notre Dame	Fremantle	\$1,500,000.00	1.0
Thornlie Christian College	Southern River	\$878,579.55	3.5
Total		26,500,000	

* Including the University of Notre Dame Australia, which has approval to access the allocation of funds for Low Interest Loans.

The interest rate shown is the effective interest rate charged after payment by the State Government of an interest subsidy in each case. The interest subsidy varies according to the approved priority given to the purpose of the loan in accordance with the Low Interest Loan Scheme (LILS) Guidelines and Procedures.

11 Ministerial Councils and Committees

TRAINING ACCREDITATION COUNCIL (TAC)

Chairperson:

Mr Ian C Hill, Ian Hill Consulting Group

Membership:

As at 30 June 2010 the Council had the following membership:

Ms Lorraine Carter, Consultant

Ms Liz Harris, Managing Director, Challenger TAFE

Dr Irene Ioannakis, Executive General Manager - Human Resources, WesTrac Pty Ltd

Mr Iain McDougall, General Manager, Hospitality Group Training (WA) Inc

Miss Janelle Dawson, Principal, Stirling Business College Pty Ltd

Mr David Wood, Chief Executive Officer, Curriculum Council

Secretariat:

Ms Rozana Kemp, Department of Education Services

WESTERN AUSTRALIAN ABORIGINAL EDUCATION AND TRAINING COUNCIL (WAAETC)

Chairperson:

Ms Carol Garlett

Membership:

As at 30 June 2010 the Council had the following membership:

Aboriginal Community Representatives:

Mr Stephen Albert, Kimberley West Region

Mr Simon Forrest, Midwest Region

Mrs Cecilia Narkle, South West Region

Mr Ken Houghton, Metropolitan Region

Mrs Maureen Kelly, Pilbara Region

Ms Erica McGuire, Wheatbelt Region

Ms Isabella Adams, Metropolitan Region

Mr Ian Trust, Kimberley East Region

Ms Leslie-Ann Conway, Goldfields Region

Ms Cindy Solonec, Metropolitan Region

Ex-Officio Members:

Mr Graeme Gower, WA Aboriginal Advisory Council on Higher Education

Professor Jeanette Hackett, University representative

Ms Regina Hill, Department of Training and Workforce Development

Ms Valerie Gould, Association of Independent Schools of WA (Inc)

Ms Sharyn O'Neill, Department of Education

Dr Ruth Shean, Department of Training and Workforce Development

Ms Mary Retel, Catholic Education Office of WA

Mr Richard Strickland, Department of Education Services

Mr David Wood, Curriculum Council

Secretariat:

Ms Lesley Radloff, Department of Education Services (Executive Officer)

Ms Lorna Pedersen, Department of Education Services (Administrative Assistant)

NON-GOVERNMENT SCHOOLS PLANNING ADVISORY COMMITTEE (NGSPAC)

Chairperson:

Professor Don Smart, Education Consultant

Membership:

As at 30 June 2010 the Council had the following membership:

Ms Valerie Gould, Association of Independent Schools of WA (Inc)

Mr Ron Gorman, Association of Independent Schools of WA (Inc)

Ms Eileen Lawrance, Catholic Education Office of WA

Dr Alec O'Connell, Catholic Education Office of WA

Ms Linley Kemeny, Department of Education

Mr James Thom, Department of Education

Mr Mark Brown, Department of Education Services

Mr Bronte Parkin, Department of Education Services

Secretariat:

Mr Ron Grimley, Department of Education Services

WESTERN AUSTRALIAN HIGHER EDUCATION COUNCIL (WAHEC)

Chairperson:

Hon Dr Elizabeth Constable MLA, Minister for Education; Tourism

Membership:

As at 30 June 2010 the Council had the following membership:

Professor Kerry Cox, Vice Chancellor, Edith Cowan University

Professor Jeanette Hackett, Vice Chancellor, Curtin University of Technology

Professor Alan Robson, Vice Chancellor, The University of Western Australia

Professor Celia Hammond, Vice Chancellor, University of Notre Dame Australia

Professor John Yovich, Vice Chancellor, Murdoch University

Secretariat

Mr Terry Werner, Department of Education Services

RURAL AND REMOTE EDUCATION ADVISORY COUNCIL (RREAC)

Chairperson:

Hon Brian Ellis MLC, Member for Agricultural Region

Deputy Chairperson:

Hon Mia Davies MLC, Member for Agricultural Region