

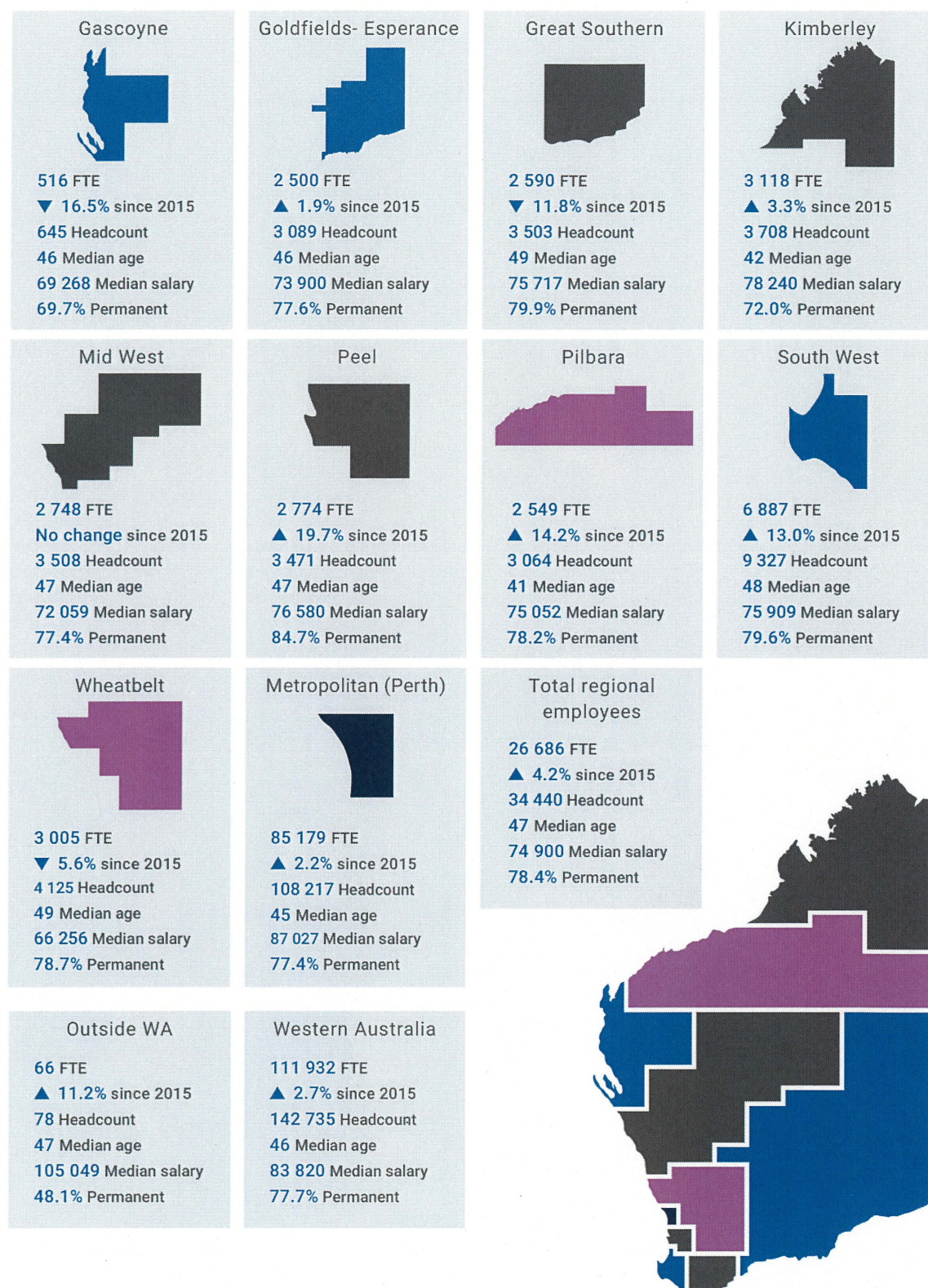
## ERRATUM

State of the Western Australian Government Sector Workforce 2018/19

Page 15 – Figure 11

The FTE figures for the Gascoyne and Great Southern regions have been transposed. The Gascoyne FTE is 516 and the Great Southern FTE is 2 590.

Figure 11: Public Sector employees by region (FTE, headcount, median age, median salary and percentage permanent)



Note: In July 2015, the Department of Health undertook a data cleansing project which resulted in changes to the number of employees in the regions. This affected the majority of the change since 2015 in Gascoyne and Great Southern.