

# FIONA STANLEY HOSPITAL

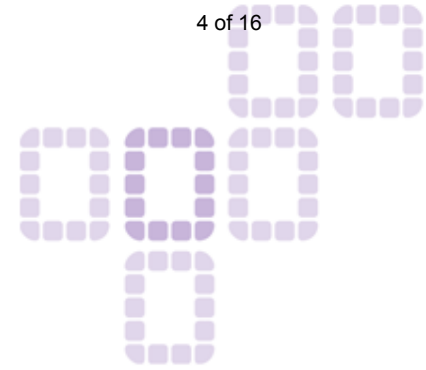
# Current scope

- \$1.76 billion tertiary hospital
- 643 beds (Stage 1)
- 83 per cent single bed patient rooms
- Gross area (excluding car park) - approx 135,000m<sup>2</sup>
- 3300 car bays (600 undercover, 750 decked, remainder at grade)
- 6300 rooms
- 16 overnight stay wards (of 24 beds each)
- 29 imaging rooms
- 16 theatres

# Current scope

- Tertiary medical and surgical services
- Major centre for trauma, burns, heart and lung transplants
- Cancer services
- Paediatric services
- Radiology services
- Renal transplantation and dialysis
- Collocated with new research facility
- Links to St John of God Private Hospital, a new medical centre, consulting rooms, a medi-hotel and local education providers

# Potential Scope Changes



- Obstetrics and neonates being advanced to stage 1
- Possible relocation of the Statewide Rehabilitation Service from the current Shenton Park campus (business case currently being developed to review options)

# Guiding principles

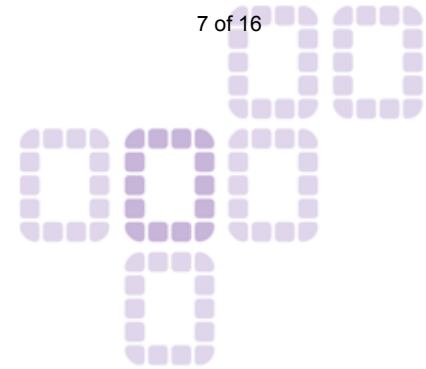
- Patient-centric care
- Care close to home
- Clinical services grouped into functional clusters
- Hospital services linked with related services at other SMAHS facilities and in the community
- “Future proofed” facilities
- Information, Technology and Communications enabled
- Separate planned and emergency patient flows
- Avoid duplication of services and facilities

# Guiding principles

- Designed to attract and retain a highly motivated and skilled workforce
- Research and education highly visible and integrated
- Maximised use of existing facilities where clinically appropriate
- Private sector involvement encouraged where appropriate

# Evidence Based Design

- Infection control
- Privacy
- Staffing
- Cost
- Falls
- Atmosphere



# Planning



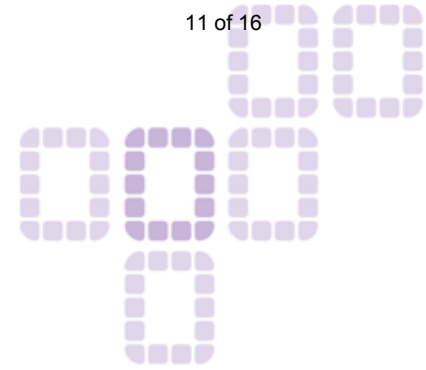
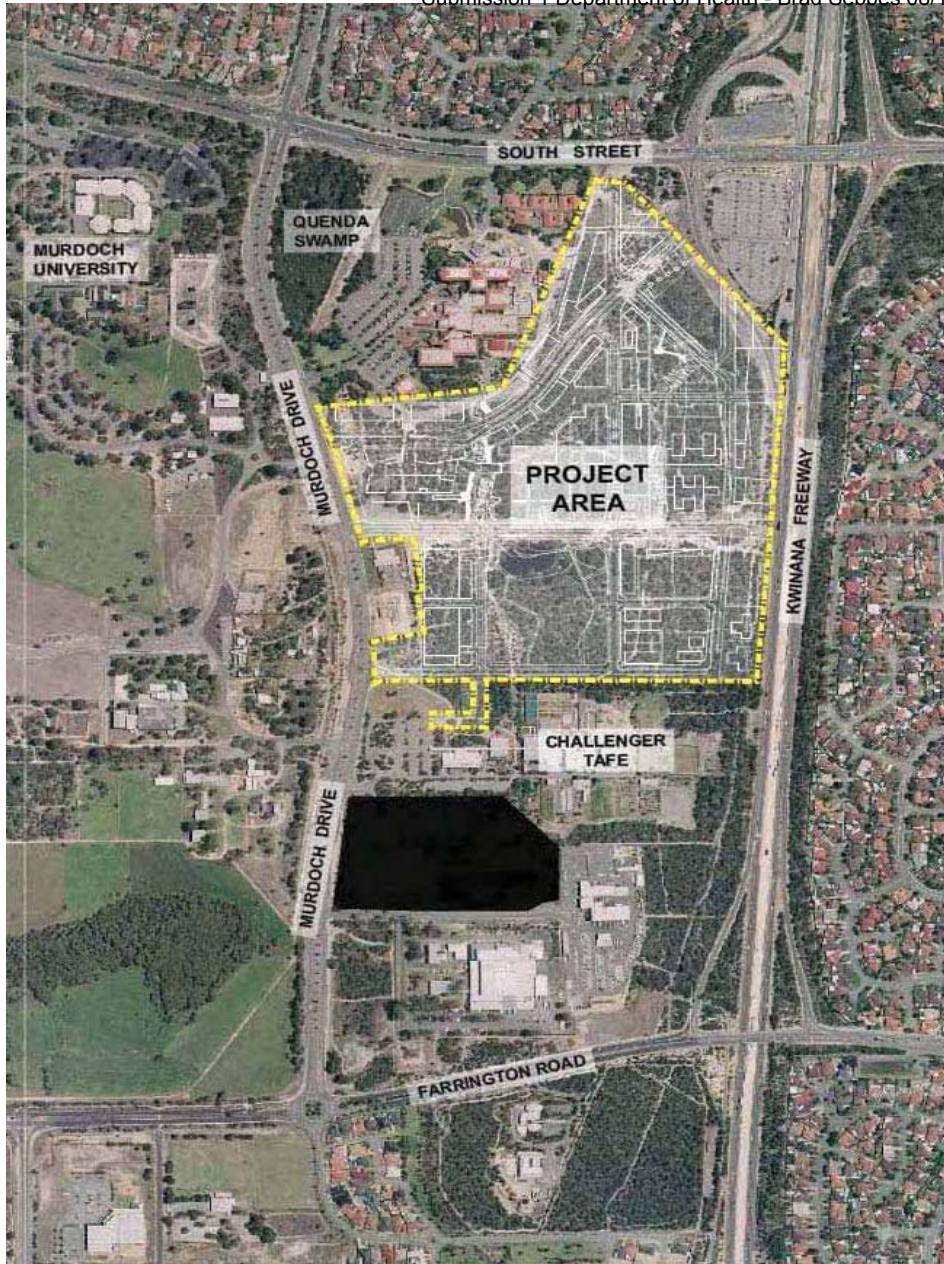
- Cardiology
- Non recognition of intended patient flow to secondary hospitals
- 66 planning groups most signed off on design
- Significant consultation has occurred
  - Clinical
  - Community
  - NGOs
- Dutch reference group



# Current Design status







# Project area

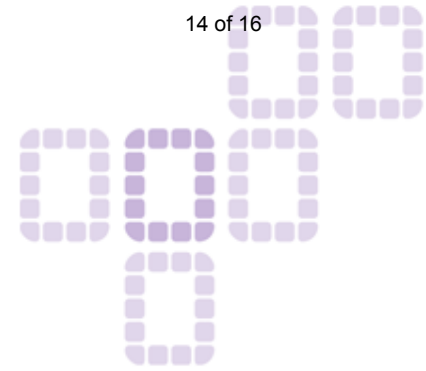
# Murdoch site

- 32.4ha green field site
- Positioned within fast growing southern metropolitan corridor
- Excellent transport connections (rail, bus, road)
- Located near existing private hospital
- Excellent links to nearby education and training providers
- Ample size for future (Stage 2) development

# Workforce

- Clinical consultation has been ongoing since 2005
- 66 working groups and other reference groups
- Over 700 staff involved
- Information booths at RPH and FH
- Staff presentations
- Workforce plan being developed
- Impact of policy change

# Workforce



- Estimated approximately 4500 FTE staff required in 2014
- Initial plan had a significant number of these staff relocating from RPH
- Workforce plan now being revised
- Likley to include a number of specific initiatives eg, specific nurse training programs for the FSH hospital

# Financial

- Capital \$1.76 billion
- Recurrent budget year 1 Approximately \$630m

