



Royal Perth Hospital

"Committed to Excellence in Healthcare"

Infrastructure Renewal Program

2008

Defining the way forward: Future Services

These services, which have been discussed at a high level help define the infrastructure program to be adopted:

- Royal Perth to continue as a Tertiary Centre
- Royal Perth Hospital to continue to be a major adult trauma and emergency centre. Therefore, it will be required to provide:
 - The required range of services to support the hospital's role as a provider of acute care
 - elective services to enable a balanced workload for clinicians in order to retain their services
 - teaching and research services to enable ongoing provision / improvement of services

RPH embraces the development of a co-ordinated, statewide approach to Healthcare, of which the points above are a subset.



What is the Building Infrastructure Vision?

The “Building Infrastructure Vision” describes a single centralised, purpose-designed campus that:

- enables improved service delivery and quality of care through the increased integration of services
- encapsulates changing community needs as well as advances in medical technology and services
- takes into consideration immediate, medium-term and longer-term requirements

The implementation of this vision will result in the closure of the Shenton Park Campus and those services being re-located to purpose-built facilities elsewhere or on the current site (Currently subject to a business case). The design of these new facilities will incorporate environmental considerations that will be conducive to supporting the rehabilitation process.



Current Status of Buildings

Shenton Park Campus:

- Wards have inadequate hand washing, and isolation (single room) facilities
- A&E Blocks, (Wards) B Block (Thorburn House) and G Block (State Spinal Unit) are unsuitable due to structural limitations such as room sizes and ratio of toilets and bathrooms to patients.
- U Block, which is a series of demountables, is not suitable for redevelopment with the external fabric, including the roof, at the end of its useful life
- Theatres have recently been improved due to infection control issues
- Despite these improvements, access to wards from theatres continues to be via external walkways

What is the Building Infrastructure Vision?

The centralised Royal Perth campus to include the following features:

- an appropriately sized and well-equipped Emergency Department with an associated purpose-designed acute medical admissions ward
- the re-location of medical and surgical services including those currently located in A and Q blocks to a new purpose built facility at WSC or FSH
- a large purpose-designed outpatient and day care facility
- education and teaching facility, including the establishment of a state “hub” for rehabilitation education and training if SPC included
- Establishment of a “medihotel” to provide the required level of care for long bed-stay patients and patients transitioning to out-patients or day care

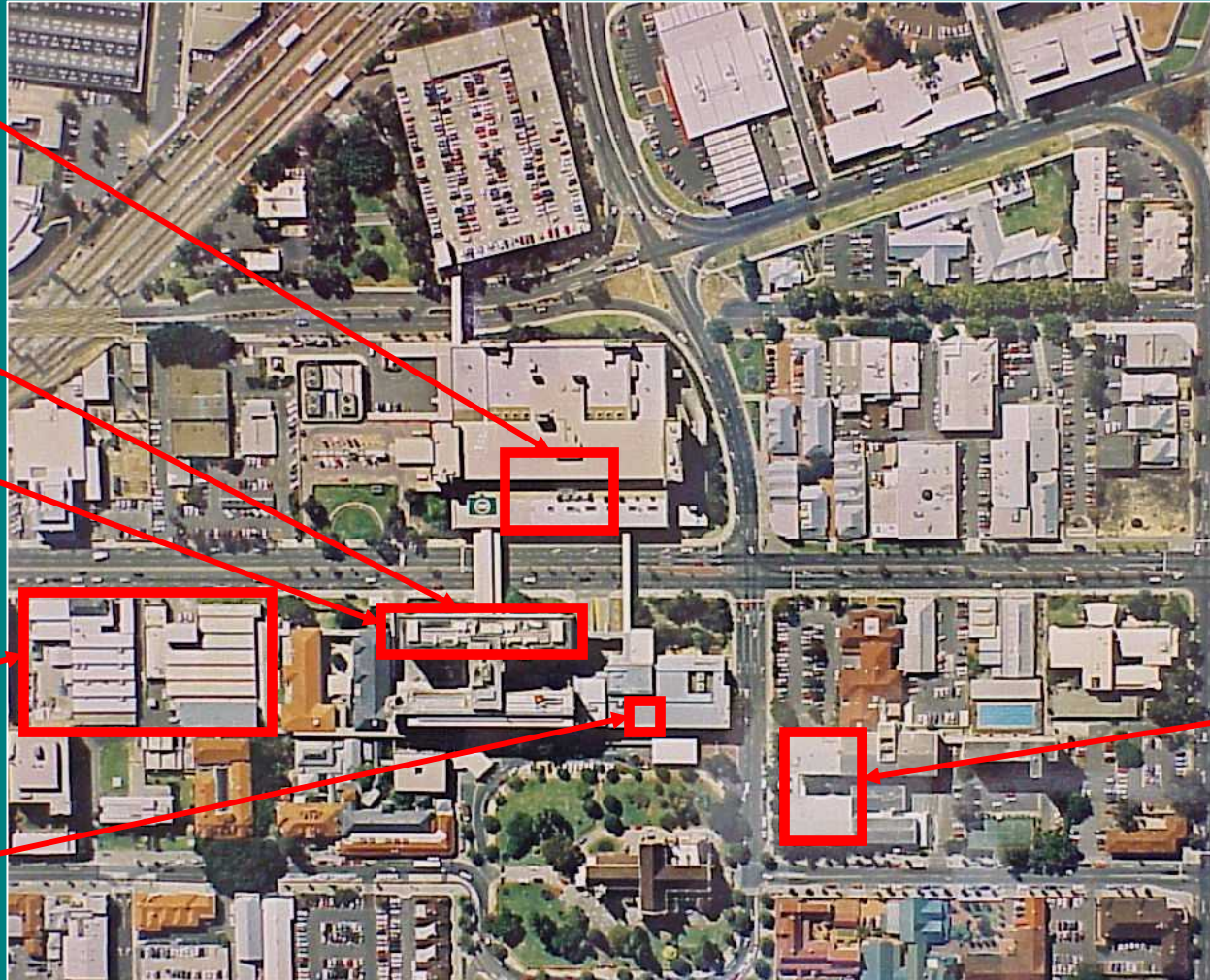
Outcomes of the Plan

The timeframe has been divided into three phases, outcomes of which are described below:

- **Phase 1** – Relieve short-term pressures on ED by increasing the number of beds by 70 (30 – medical, 40 trauma / burns) and prepare for Capital Works program
- **Phase 2** – Perform Major Capital Works
- **Phase 3** – Finalise Major Capital Works and re-location program

Within each of the phases, a series of key initiatives have been defined that will enable a logical progression towards the final outcome

Phase 1



Construct 40 bed trauma/burns ward North Block L3 in existing outpatients area

Construct Burns research area, in old kitchen area, A Block Level 11

Refurbish remaining A Block Wards.

Vacate and demolish WSC blocks D,E,F

Develop new Emergency Department Triage Cat 4,5 Treatment area and AAU

Re-locate Outpatients to former Dental School

Phase 2

Construct new Northwest block with

- Teaching / education facility
- Emergency Department with separate acute medical admissions area
- 250 bed medical facility

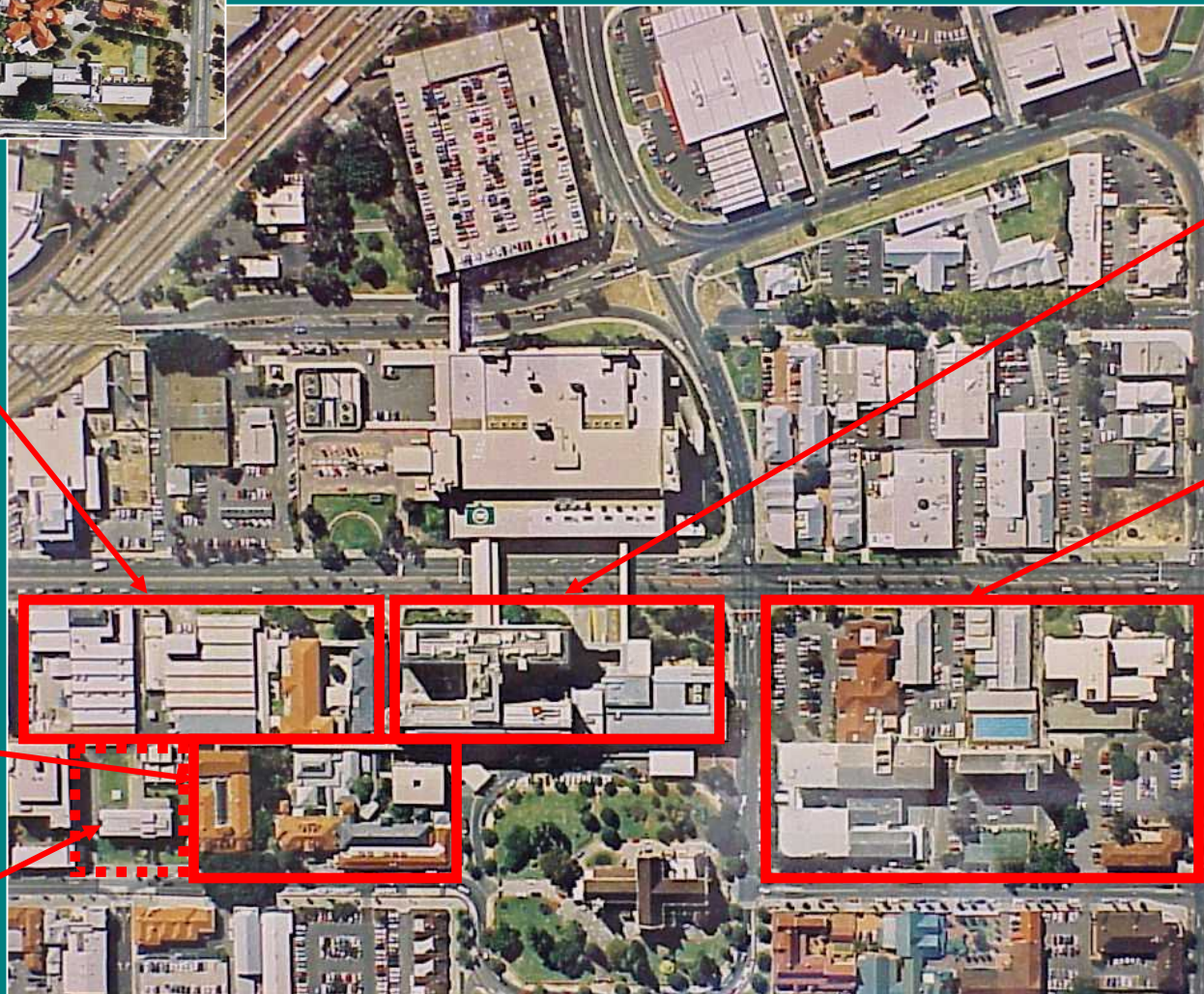


Construct low-rise block comprising:

- 120-bed Rehab Unit with landscaped gardens
- 60-bed Orthopaedic Unit
- Rehab Outpatients
- Rehab Engineering

Demolish B and C Blocks

Phase 3



Demolish A and Q blocks for alternate use

Redevelop spare eastern precinct, retain outpatients country health and WASON.

Relocate Shenton Park campus services to new facility and offer SPC for sale

Vacate Heritage Blocks K,L,M,N and P and offer for special purpose lease (e.g. medical consulting)

Possible demolition of Ainslie house