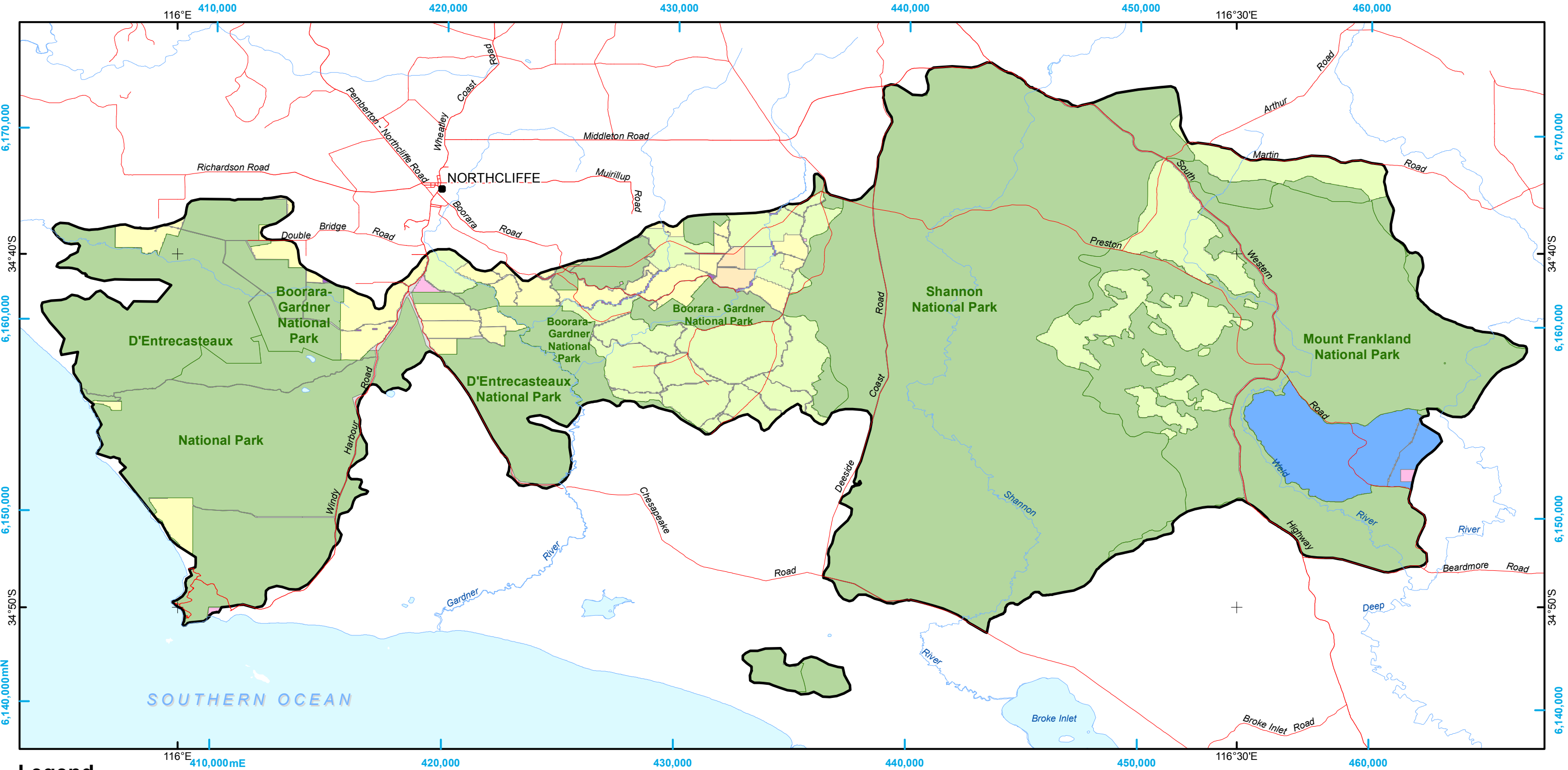
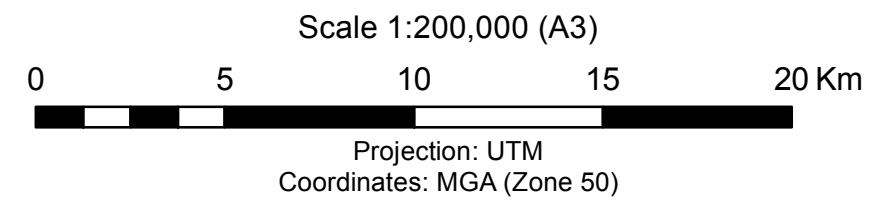


# Question on Notice LC 2431 Tenure affected by the Donnelly 19 wildfire - February 2015



## Legend

- |  |                          |
|--|--------------------------|
| <b>Land vested in the Conservation Commission</b>        | <b>Other Public land</b> |
| National park  | Unallocated Crown Land   |
| Forest Conservation Area (Sec 62) <sup>1</sup>           | Other Crown reserve      |
| State forest <sup>1</sup>                                | Road reserve             |
| Freehold land held under title by the Executive Director | Fire boundary            |
| <b>Private land</b>                                      |                          |
| Freehold   |                          |
- <sup>1</sup> Includes proposed tenure from the Forest Management Plan 2014-2023



## Data Dictionary

Theme	Source	Month	Year	Custodian
Existing and proposed tenure	DPW	June	2014	Forest Management Branch
Donnelly 19 fire boundary	DPW	18 Feb	2015	Fire Management Services

The Department of Parks and Wildlife does not guarantee that this map is without flaw of any kind and disclaims all liability for any error, loss or other consequence which may arise from relying on any information depicted.

Produced by the Forest Management Branch  
under the direction of the Director General,  
Department of Parks and Wildlife.

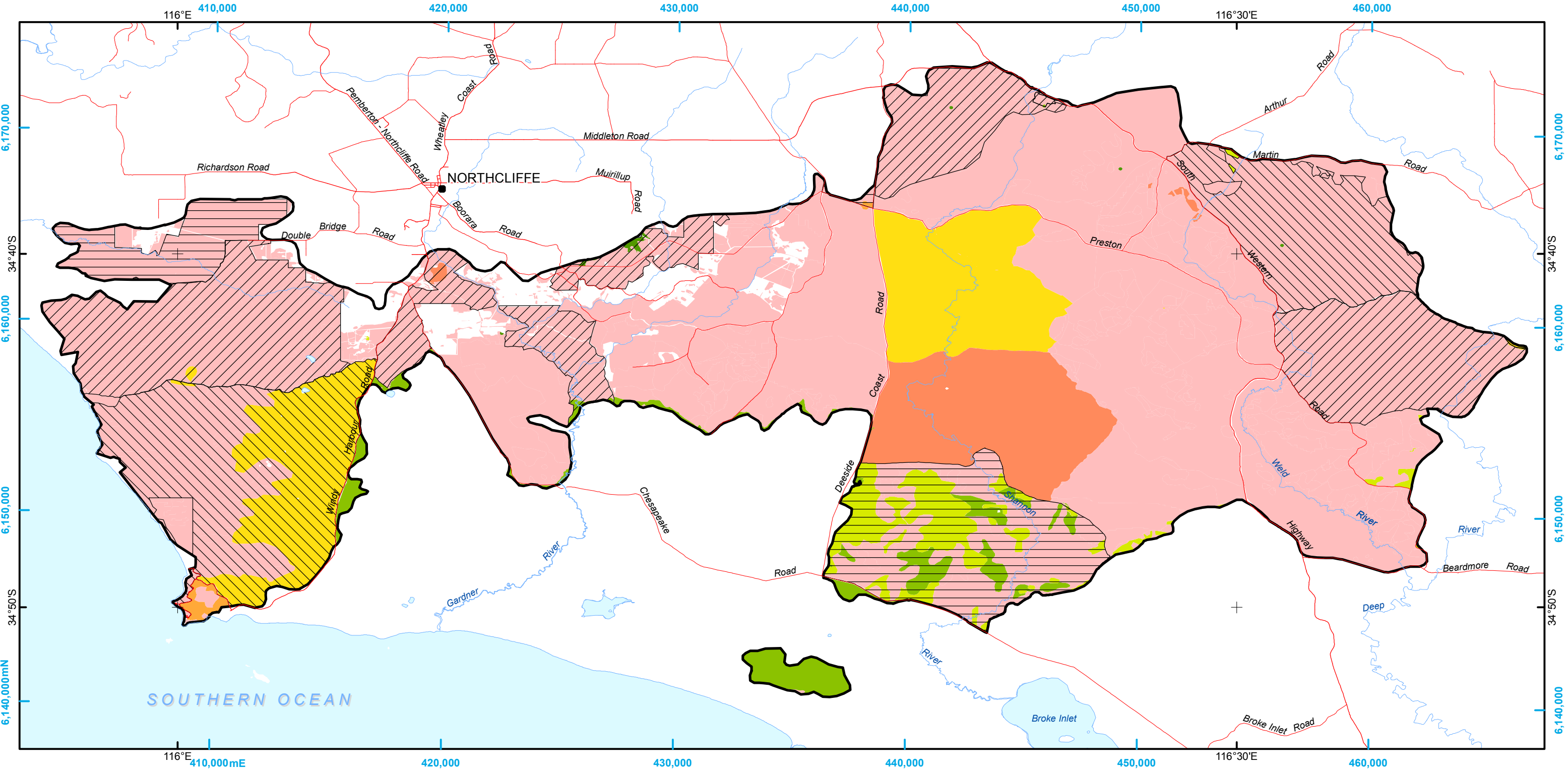
3 March 2015










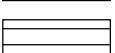


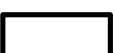

**Department of  
Parks and Wildlife**

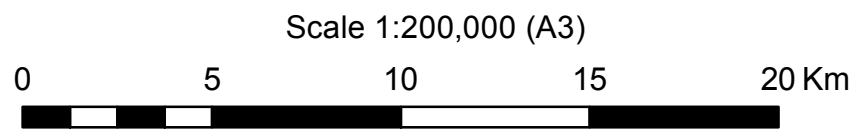


# Fuel age and scheduled burns within the Donnelly 19 wildfire area - February 2015



## Legend

- |   |   |   |  |
|---|---|---|--|
| <b>Fuel age</b>   |  5 year old  | <b>Scheduled prescribed burn</b>  |  2015 |
|  1 year old |  6 year old  |  2016          |  |
|  2 year old |  7 year old  |  2017          |  |
|  3 year old |  >7 year old |  Fire boundary |  |
|  4 year old |   |   |  |



Projection: UTM  
Coordinates: MGA (Zone 50)



Produced by the Forest Management Branch  
under the direction of the Director General,  
Department of Parks and Wildlife.

5 March 2015

## Data Dictionary

Theme	Source	Month	Year	Custodian
Fuel age	DPW	December	2014	Fire Management Services
Prescribed burns	DPW	December	2014	Fire Management Services
Donnelly 19 fire boundary	DPW	18 Feb	2015	Fire Management Services

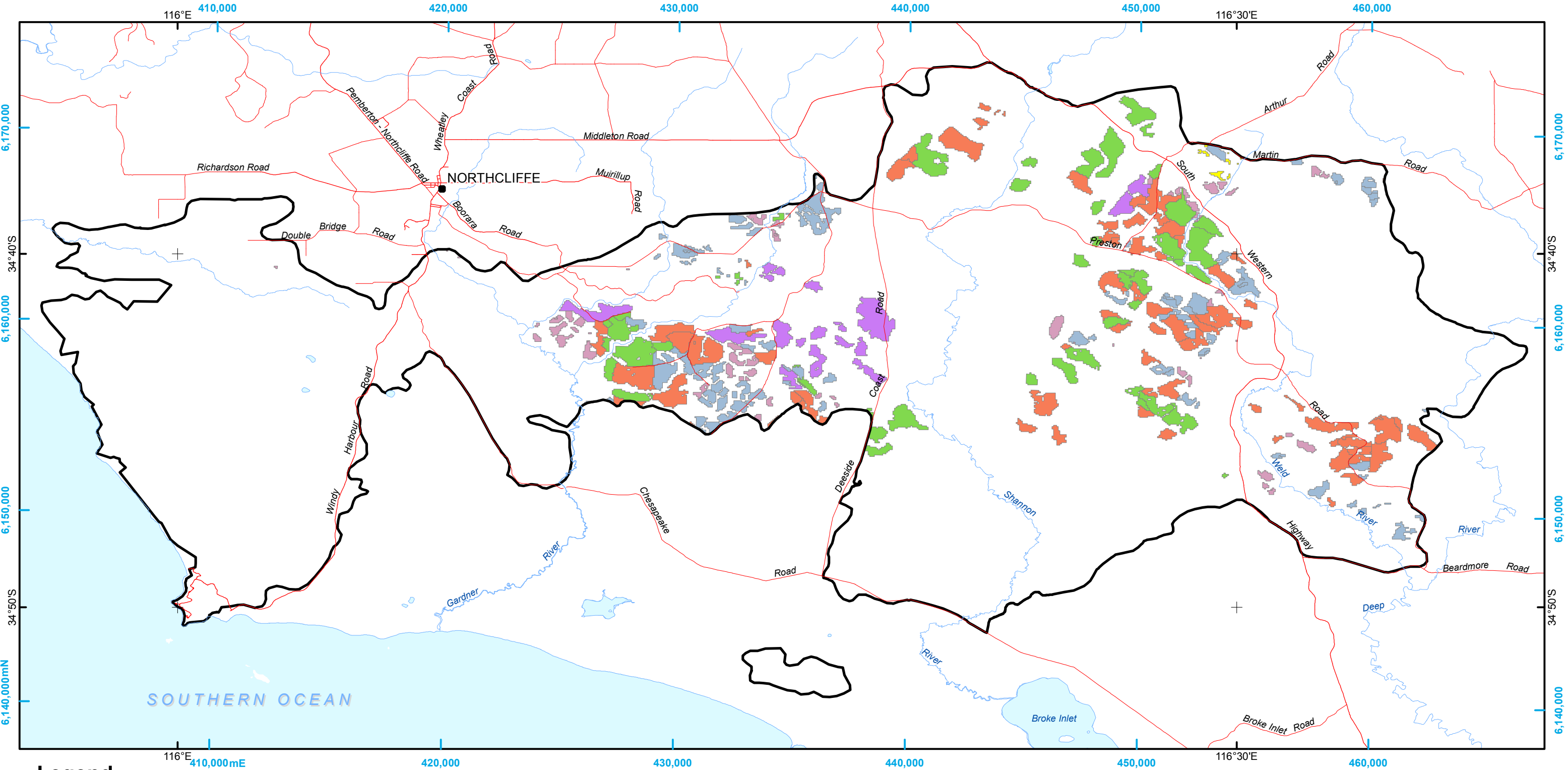
The Department of Parks and Wildlife does not guarantee that this map is without flaw of any kind and disclaims all liability for any error, loss or other consequence which may arise from relying on any information depicted.



Department of  
**Parks and Wildlife**



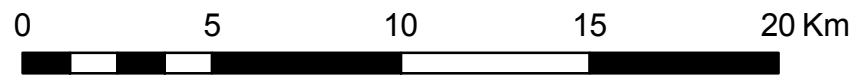
# Even-aged regrowth karri affected by the Donnelly 19 wildfire - February 2015



## Legend

- Decade of regeneration**
- 1967 - 1969
  - 1970 - 1979
  - 1980 - 1989
  - 1990 - 1999
  - 2000 - 2009
  - 2010 - 2013
- Fire boundary

Scale 1:200,000 (A3)



Projection: UTM  
Coordinates: MGA (Zone 50)



## Data Dictionary

Theme	Source	Month	Year	Custodian
Karri regrowth	DPW	December	2013	Forest Management Branch
Donnelly 19 fire boundary	DPW	18 Feb	2015	Fire Management Services

The Department of Parks and Wildlife does not guarantee that this map is without flaw of any kind and disclaims all liability for any error, loss or other consequence which may arise from relying on any information depicted.

Produced by the Forest Management Branch  
under the direction of the Director General,  
Department of Parks and Wildlife.

3 March 2015



**Department of  
Parks and Wildlife**

