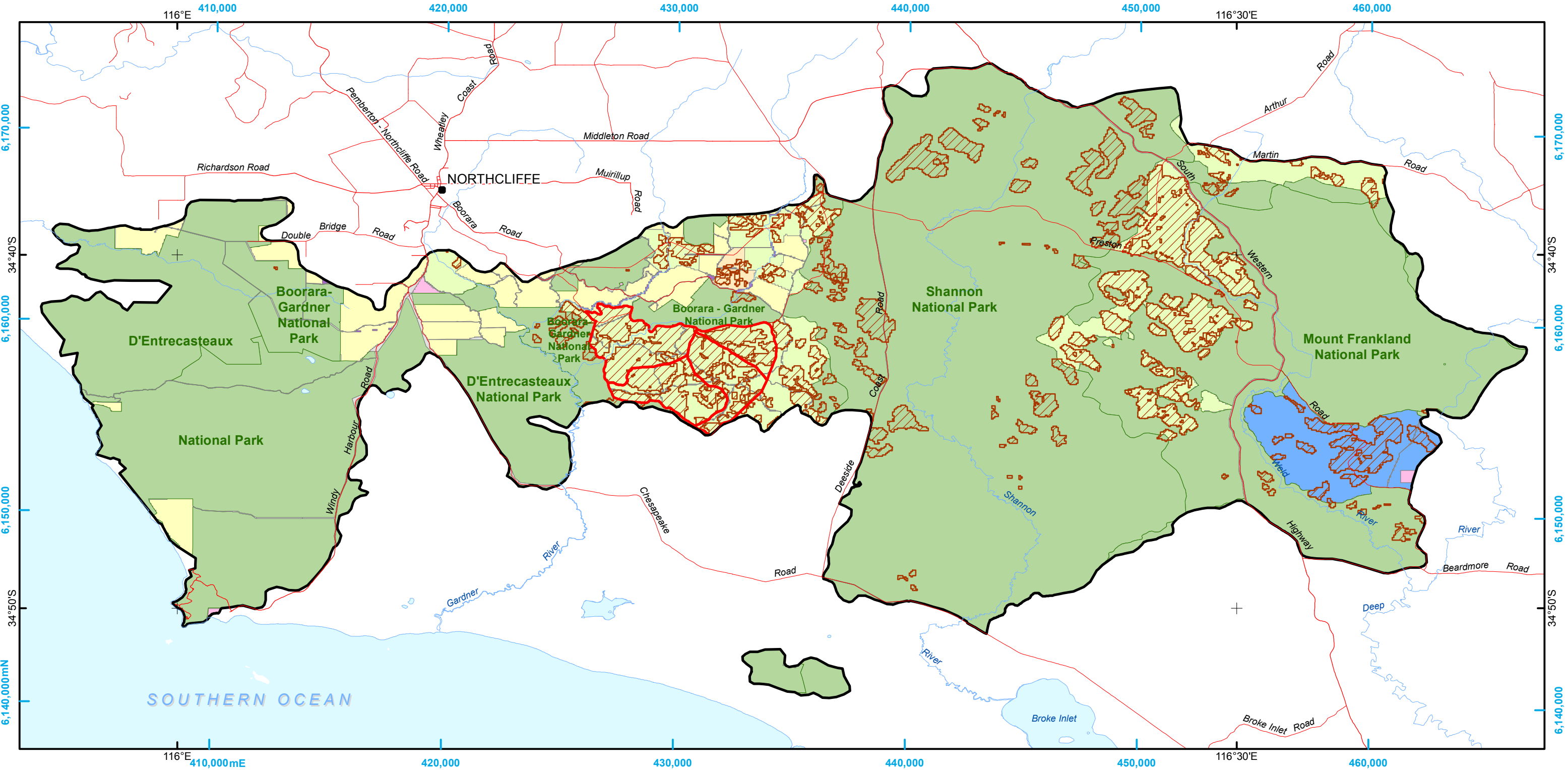


# Regrowth karri forest damaged by the O'Sullivan/Northcliffe bushfire (February 2015)



## Legend

- Land vested in the Conservation Commission**
- National park
  - Forest Conservation Area (Sec 62)<sup>1</sup>
  - State forest<sup>1</sup>
  - Freehold land held under title by the Executive Director

- Other Public land**
- Unallocated Crown Land
  - Other Crown reserve
  - Road reserve
- Private land**
- Freehold

- Regrowth karri forest
- Potential salvage operations<sup>2</sup>
- Fire perimeter

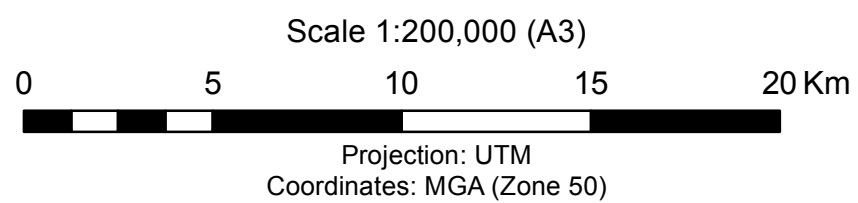
Produced by the Forest Management Branch under the direction of the Director General, Department of Parks and Wildlife. 30 March 2016

## Data Dictionary

Theme	Source	Month	Year	Custodian
Existing and proposed tenure	DPW	June	2015	Forest Management Branch
Fire perimeter	DPW	18 Feb	2015	Fire Management Services
Regrowth karri	DPW	Dec	2014	Forest Management Branch

The Department of Parks and Wildlife does not guarantee that this map is without flaw of any kind and disclaims all liability for any error, loss or other consequence which may arise from relying on any information depicted.

<sup>1</sup> Includes proposed tenure from the *Forest Management Plan 2014-2023*  
<sup>2</sup> Planning units within which targeted salvage operations may occur



Department of Parks and Wildlife

